





## Welcome to The Signature

Introducing a new and exclusive development in one of Accra's most vibrant up-and-coming area. With location, leisure and luxury at highly commendable market rates, the Signature truly serves as a hallmark of African excellence.

\*Images displayed are indicative of the style only and the finished product may differ

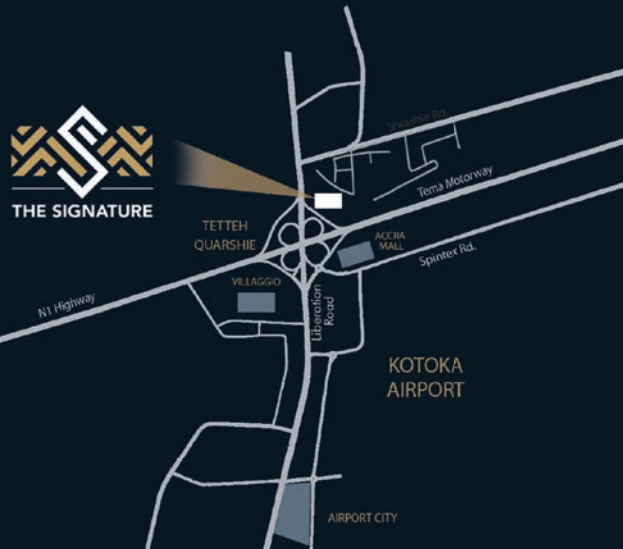
# EXCEPTIONAL LOCATION

Accra Mall:  
5 minutes

Kotoka Airport:  
7 minutes

Airport City:  
7 minutes

Osu:  
15 minutes



## IN THE HEART OF ACCRA

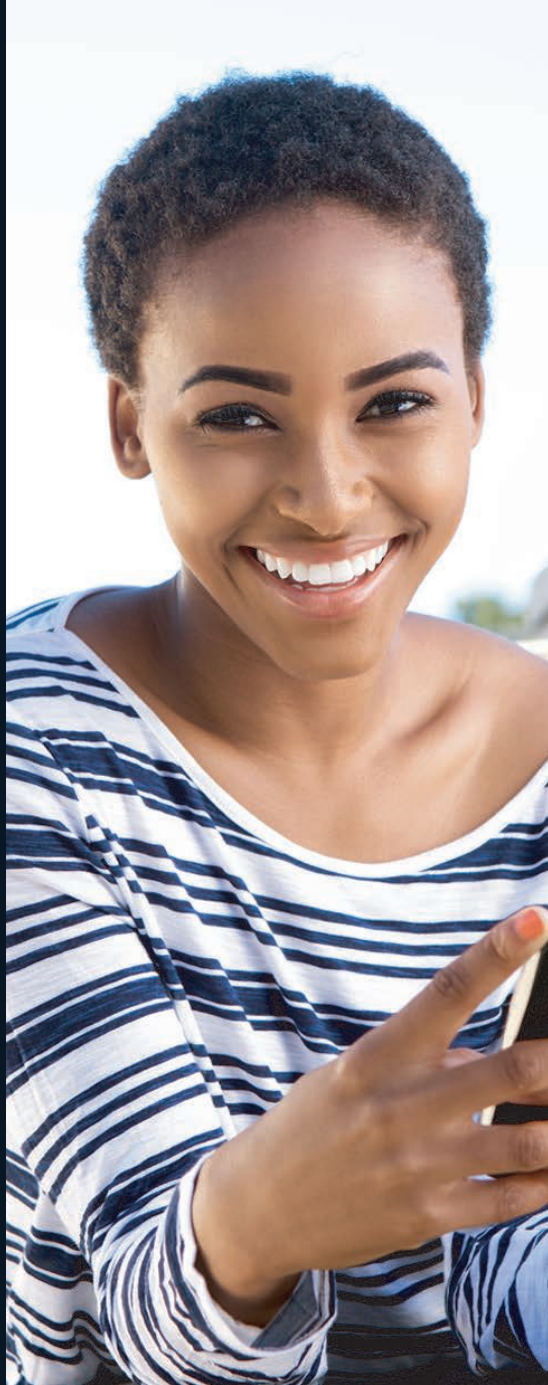
Located opposite the Accra Mall and just a stone's throw away from Kotoka International airport, The Signature provides the perfect location for a balanced working and living lifestyle.

Situated in the thriving and newly developed area of Shiashie in East Legon, the development is created to provide a relaxed atmosphere. East Legon with its colourful boutiques, restaurants and coffee shops provides a beautiful backdrop for your new home.

# CONTEMPORARY LIVING

---

- 1, 2 and 3 bedroom apartments and a 4 bedroom penthouse with a private pool
- High spec finishes
- Contemporary décor throughout
- Access to communal gardens
- Fantastic range of onsite amenities
- Excellent shopping and restaurants
- Children's Playground



## THE IDEAL SETTING

Designed to make a notable mark on the Accra skyline, The Signature's architectural orientation is unlike anything found within the African continent. Inspired by Ghana's Adinkra symbol 'Mframadan' denoting strength and sturdiness, The Signature represents the pinnacle of refined African living.

A highly ambitious and ground breaking development, The Signature's beautifully designed building is set in impeccably manicured surroundings providing peace and tranquillity amongst the tree lined private lawns. The perfect place to live, relax, unwind and take life at your own pace.

# WORLD CLASS AMENITIES:

- Rooftop pool and bar
- Ground level pool
- Fitness Centre
- Residents only garden
- 4,000sqm of Retail and Commercial space
- Cafe and Restaurants
- Concierge Service
- 24 hour security service and CCTV.
- Private underground parking
- Onsite Facilities Management Team



Unwind and renew in lavish surroundings that lie just moments away from your new home.

Relax in peace or simply workout in style, the development offers a state of the art fitness centre and residents only swimming pool.



## ACCRA CITY LIVING HAS A NEW MEANING:

With distinct private balcony gardens, 4,000 square meters of retail and commercial space, indoor gym, roof top communal swimming pool and an outdoor communal garden the development epitomises convenient city living.



## **WORK LIFE BALANCE AT ITS FINEST**

What better way to indulge and relax than with friends and family over a coffee or a bite to eat in one of our state of the art eateries just moments away from your new home. Exclusive retail stores, restaurants, cafes and a conference facility to provide you with everything you need for your busy working life. The epitome of convenient living in the heart of the city.

Underground car parking provides a respite from noise and vehicle congestion allowing for tranquil green spaces for your enjoyment.

# GREAT VIEWS OF THE ACCRA SKYLINE

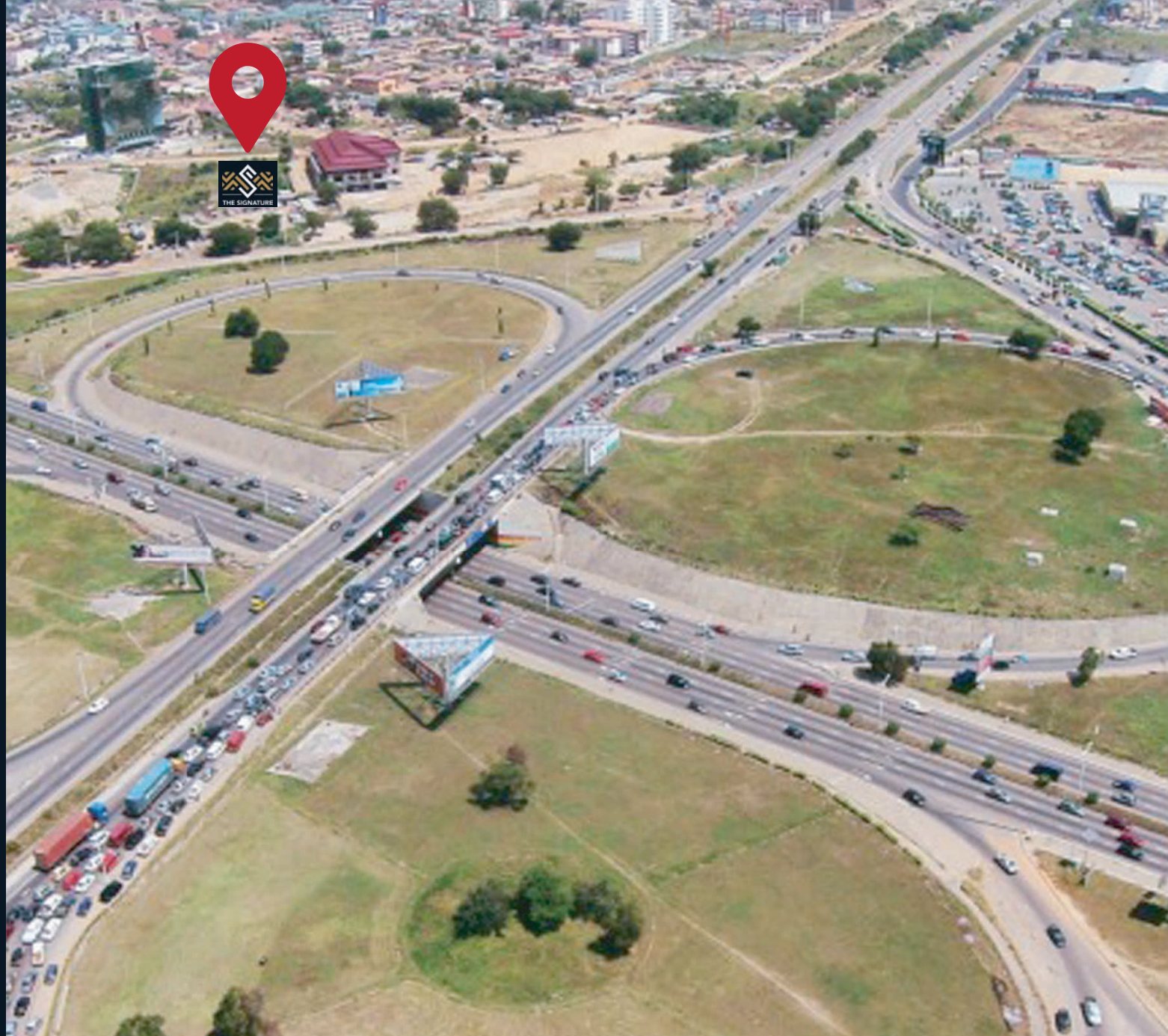
Offering stunning views in every direction, The Signature's unique balcony garden rises above its surroundings to bring the beautiful Accra skyline to your home.



# BALCONY GARDEN

Views stretch across the Tetteh Quarshie round about and beyond providing you with uninterrupted panoramic views.

Whether you're hosting friends, family or are simply in need of a unique outdoor space to play with your children, these balcony gardens provide a perfect addition to your new home.







# A HOME FOR THE PRESENT AN INVESTMENT FOR THE FUTURE

One of the most prominent housing developments in Accra in the past decade. Every Facet of The Signature has been perfectly proportioned and elegantly appointed to your needs.

With a superb location site, unique architectural design and an abundance of retail and health attentive amenities, The Signature provides investors with a great opportunity to own real estate in an up-and-coming cosmopolitan area and what's more, all at highly competitive prices.

## Prices starting at \$64,500

The element of affordability means whether you're purchasing an apartment as a future investment, a buy to let, or simply require a go-between for work and home, our low prices allow for long term return on investment and superb property price generation.





\*Images displayed are indicative of the style only and the finished product may differ

## STUDIOS

---

Each Studio is crafted to extracting specification.







\*Images displayed are indicative of the style only and the finished product may differ

# STUDIOS

## TYPE 1 ●



### ROOMS

Living  
Balcony  
**Total Area**

### DIMENSIONS

3.6m x 6.3m  
3.7m x 1.0m  
**27.8m<sup>2</sup>**

APARTMENT	TYPE	SIZE	FLOOR	SELF FINANCE	MORTGAGE
A102	1	27.8	FIRST	\$64,500	\$69,500
A116	1	27.8	FIRST	\$64,500	\$69,500
A302	1	27.8	THIRD	\$77,500	\$82,500
A315	1	27.8	THIRD	\$75,500	\$80,500
A502	1	27.8	FIFTH	\$83,500	\$88,500
A512	1	27.8	FIFTH	\$81,500	\$86,500
A702	1	27.8	SEVENTH	\$87,500	\$92,500
A710	1	27.8	SEVENTH	\$87,500	\$92,500
A902	1	27.8	NINTH	\$93,500	\$98,500
A908	1	27.8	NINTH	\$93,500	\$98,500

## TYPE 2 ●



### ROOMS

Living  
Balcony  
**Total Area**

### DIMENSIONS

3.5m x 6.3m  
3.6m x 1.0m  
**28.6m<sup>2</sup>**

APARTMENT	TYPE	SIZE	FLOOR	SELF FINANCE	MORTGAGE
A408	2	28.6	FOURTH	\$82,500	\$87,500

## TYPE 4 ●



### ROOMS

Living  
Balcony  
**Total Area**

### DIMENSIONS

3.9m x 6.3m  
4.0m x 1.0m  
**31.3m<sup>2</sup>**

APARTMENT	TYPE	SIZE	FLOOR	SELF FINANCE	MORTGAGE
A706	4	31.3	SEVENTH	\$96,250	\$101,250

## UNIT LOCATION

### FIRST FLOOR



BLOCK A

### THIRD FLOOR



BLOCK A

### FOURTH FLOOR



BLOCK A

### FIFTH FLOOR



BLOCK A

### SEVENTH FLOOR



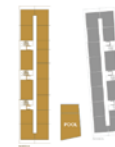
BLOCK A

### NINTH FLOOR



BLOCK A

### PHASE 1



# STUDIOS

## TYPE 5 ●



### ROOMS

Living  
Balcony  
**Total Area**

### DIMENSIONS

4.8m x 6.3m  
4.9m x 1.0m  
**37.7m<sup>2</sup>**

APARTMENT	TYPE	SIZE	FLOOR	SELF FINANCE	MORTGAGE
A104	5	37.7	FIRST	\$94,250	\$99,250
A204	5	37.7	SECOND	\$97,250	\$102,250
A304	5	37.7	THIRD	\$102,250	\$107,250
A309	5	37.7	THIRD	\$100,250	\$105,250
A404	5	37.7	FOURTH	\$105,250	\$110,250
A409	5	37.7	FOURTH	\$105,250	\$110,250
A504	5	37.7	FIFTH	\$108,250	\$113,250
A604	5	37.7	SIXTH	\$111,250	\$116,250
A607	5	37.7	SIXTH	\$111,250	\$116,250
A704	5	37.7	SEVENTH	\$112,250	\$117,250
A804	5	37.7	EIGHT	\$115,250	\$120,250
A1004	5	37.7	TENTH	\$121,250	\$126,250

## TYPE 7 ●



### ROOMS

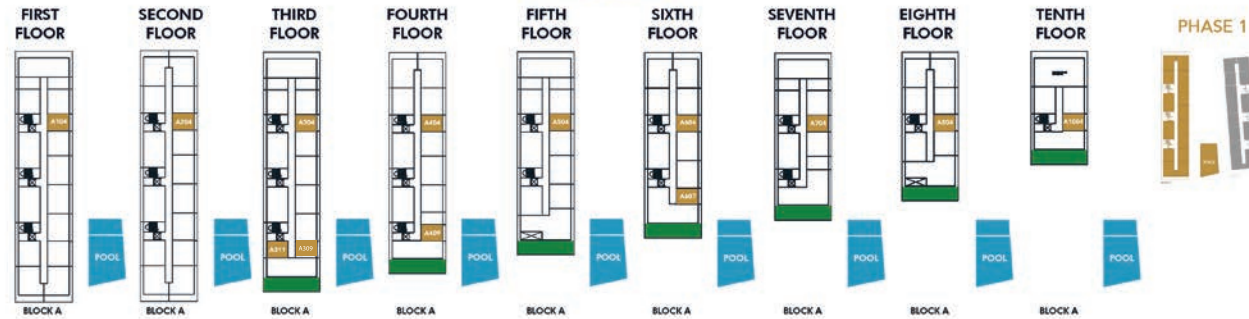
Living  
Balcony  
**Total Area**

### DIMENSIONS

4.8m x 6.3m  
4.9m x 1.0m  
**44.2m<sup>2</sup>**

APARTMENT	TYPE	SIZE	FLOOR	SELF FINANCE	MORTGAGE
A311	7	44.2	THIRD	\$116,500	\$121,500

### UNIT LOCATION



# ONE BEDROOM APARTMENTS

---

Every detail has been  
carefully considered.



# ONE BEDROOM APARTMENTS

## TYPE 1 ●



ROOMS  
Living / Kitchen  
Bedroom  
Balcony  
Total Area

DIMENSIONS  
4.1m x 6.3m  
3.1m x 4.6m  
1.0m x 7.4m  
57.1m<sup>2</sup>

APARTMENT	TYPE	SIZE	FLOOR	SELF FINANCE	MORTGAGE
A103	1	57.1	FIRST	\$142,750	\$150,750
A105	1	57.1	FIRST	\$142,750	\$150,750
A115	1	57.1	FIRST	\$142,750	\$150,750
A205	1	57.1	SECOND	\$145,750	\$153,750
A303	1	57.1	THIRD	\$150,750	\$158,750
A305	1	57.1	THIRD	\$150,750	\$158,750
A314	1	57.1	THIRD	\$148,750	\$156,750
A405	1	57.1	FOURTH	\$153,750	\$161,750
A503	1	57.1	FIFTH	\$156,750	\$164,750
A505	1	57.1	FIFTH	\$156,750	\$164,750
A507	1	57.1	FIFTH	\$156,750	\$164,750
A511	1	57.1	FIFTH	\$154,750	\$162,750
A703	1	57.1	SEVENTH	\$162,750	\$170,750
A705	1	57.1	SEVENTH	\$162,750	\$170,750
A709	1	57.1	SEVENTH	\$160,750	\$168,750
A805	1	57.1	EIGHTH	\$165,750	\$173,750
A903	1	57.1	NINTH	\$168,750	\$176,750
A907	1	57.1	NINTH	\$166,750	\$174,750

## TYPE 2 ●



ROOMS  
Living / Kitchen  
Bedroom  
Balcony  
Total Area

DIMENSIONS  
4.1m x 6.3m  
3.1m x 4.6m  
1.0m x 7.4m  
57.1m<sup>2</sup>

APARTMENT	TYPE	SIZE	FLOOR	SELF FINANCE	MORTGAGE
A109	2	57.1	FIRST	\$142,750	\$150,750
A209	2	57.1	SECOND	\$145,750	\$153,750

## TYPE 3 ●

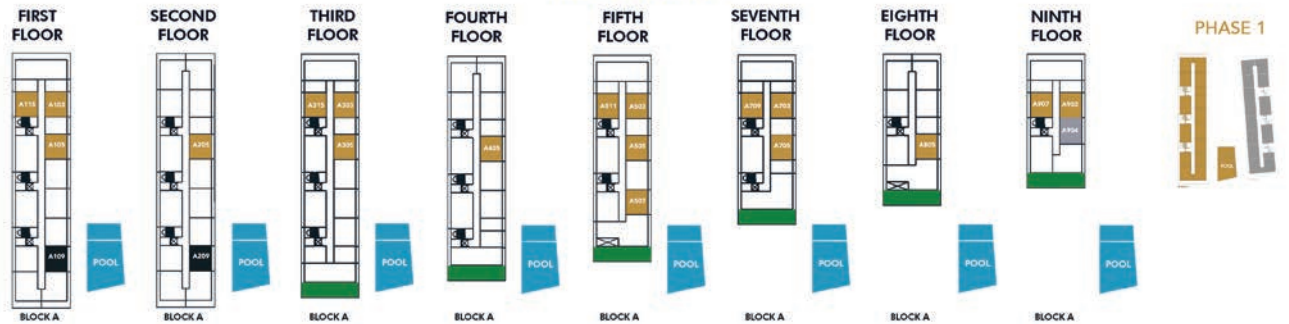


ROOMS  
Living / Kitchen  
Bedroom  
Balcony  
Total Area

DIMENSIONS  
4.4m x 6.3m  
3.1m x 6.3m  
1.0m x 7.9m  
59.6m<sup>2</sup>

APARTMENT	TYPE	SIZE	FLOOR	SELF FINANCE	MORTGAGE
A904	3	59.6	NINTH	\$175,000	\$183,000

## UNIT LOCATION



# ONE BEDROOM APARTMENTS

## TYPE 4 ●



### ROOMS

Living / Kitchen  
Bedroom  
Balcony  
Total Area

### DIMENSIONS

4.5m x 6.3m  
3.4m x 6.3m  
1.0m x 8.1m  
62.4m<sup>2</sup>

APARTMENT	TYPE	SIZE	FLOOR	SELF FINANCE	MORTGAGE
A203	4	62.4	SECOND	\$159,000	\$167,000
A215	4	62.4	SECOND	\$159,000	\$167,000
A403	4	62.4	FOURTH	\$167,000	\$175,000
A413	4	62.4	FOURTH	\$165,000	\$173,000
A603	4	62.4	SIXTH	\$173,000	\$181,000
A610	4	62.4	SIXTH	\$171,000	\$179,000
A803	4	62.4	EIGHT	\$179,000	\$187,000
A808	4	62.4	EIGHT	\$177,000	\$185,000
A1002	4	62.4	TENTH	\$183,000	\$191,000
A1003	4	62.4	TENTH	\$185,000	\$193,000

## TYPE 5 ●



### ROOMS

Living / Kitchen  
Bedroom  
Balcony  
Total Area

### DIMENSIONS

4.5m x 6.3m  
3.4m x 6.3m  
1.0m x 8.1m  
62.4m<sup>2</sup>

APARTMENT	TYPE	SIZE	FLOOR	SELF FINANCE	MORTGAGE
A108	5	62.4	FIRST	\$156,000	\$164,000
A208	5	62.4	SECOND	\$159,000	\$167,000
A308	5	62.4	THIRD	\$164,000	\$172,000

## TYPE 6 ●



### ROOMS

Living / Kitchen  
Bedroom  
Balcony  
Total Area

### DIMENSIONS

4.1m x 6.3m  
3.1m x 6.3m  
1.0m x 13.1m  
63.6m<sup>2</sup>

APARTMENT	TYPE	SIZE	FLOOR	SELF FINANCE	MORTGAGE
A112	6	63.6	FIRST	\$159,000	\$167,000
A212	6	63.6	SECOND	\$162,000	\$170,000

## UNIT LOCATION

### FIRST FLOOR



BLOCK A

### SECOND FLOOR



BLOCK A

### THIRD FLOOR



BLOCK A

### FOURTH FLOOR



BLOCK A

### SIXTH FLOOR



BLOCK A

### EIGHTH FLOOR



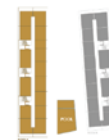
BLOCK A

### TENTH FLOOR



BLOCK A

### PHASE 1



# ONE BEDROOM APARTMENTS

## TYPE 7 ●



### ROOMS

Living / Kitchen  
Bedroom  
Balcony  
Total Area

### DIMENSIONS

4.7m x 6.3m  
3.4m x 6.3m  
1.0m x 8.3m  
63.9m<sup>2</sup>

APARTMENT	TYPE	SIZE	FLOOR	SELF FINANCE	MORTGAGE
A407	7	63.9	FOURTH	\$170,750	\$178,750
A606	7	63.9	SIXTH	\$176,750	\$184,750

## TYPE 8 ●



### ROOMS

Living / Kitchen  
Bedroom  
Balcony  
Total Area

### DIMENSIONS

5.1m x 6.3m  
3.4m x 6.3m  
1.0m x 8.7m  
67.0m<sup>2</sup>

APARTMENT	TYPE	SIZE	FLOOR	SELF FINANCE	MORTGAGE
A106	8	67	FIRST	\$167,500	\$175,500
A107	8	67	SECOND	\$167,500	\$175,500
A206	8	67	SECOND	\$170,500	\$178,500
A207	8	67	THIRD	\$170,500	\$178,500
A306	8	67	THIRD	\$175,500	\$183,500
A307	8	67	THIRD	\$175,500	\$183,500
A406	8	67	FOURTH	\$178,500	\$186,500
A506	8	67	FIFTH	\$181,500	\$189,500
A605	8	67	SIXTH	\$187,500	\$195,500

## TYPE 9 ●



### ROOMS

Living / Kitchen  
Bedroom  
Balcony  
Total Area

### DIMENSIONS

5.1m x 6.3m  
3.4m x 6.3m  
1.0m x 14.4m  
73.5m<sup>2</sup>

APARTMENT	TYPE	SIZE	FLOOR	SELF FINANCE	MORTGAGE
A509	9	73.5	FIFTH	\$195,750	\$203,750
A807	9	73.5	EIGHTH	\$204,750	\$212,750

## UNIT LOCATION

### FIRST FLOOR



BLOCK A

### SECOND FLOOR



BLOCK A

### THIRD FLOOR



BLOCK A

### FOURTH FLOOR



BLOCK A

### FIFTH FLOOR



BLOCK A

### SIXTH FLOOR



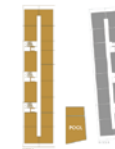
BLOCK A

### EIGHTH FLOOR



BLOCK A

### PHASE 1



# ONE BEDROOM APARTMENTS

## TYPE 11



### ROOMS

Living / Kitchen  
Bedroom  
Balcony  
**Total Area**

### DIMENSIONS

5.0m x 7.4m  
3.4m x 6.3m  
1.0m x 10.8m  
**88.6m<sup>2</sup>**

APARTMENT	TYPE	SIZE	FLOOR	SELF FINANCE	MORTGAGE
A110	11	88.6	FIRST	\$221,500	\$229,500
A111	11	88.6	FIRST	\$221,500	\$229,500
A201	11	88.6	SECOND	\$224,500	\$232,500
A202	11	88.6	SECOND	\$224,500	\$232,500
A210	11	88.6	SECOND	\$224,500	\$232,500
A211	11	88.6	SECOND	\$224,500	\$232,500
A401	11	88.6	FOURTH	\$230,500	\$238,500
A402	11	88.6	FOURTH	\$232,500	\$240,500
A601	11	88.6	SIXTH	\$236,500	\$244,500
A602	11	88.6	SIXTH	\$238,500	\$246,500
A801	11	88.6	EIGHTH	\$242,500	\$250,500
A802	11	88.6	EIGHTH	\$242,500	\$250,500

## TYPE 12



### ROOMS

Living / Kitchen  
Bedroom  
Balcony  
Private Garden  
**Total Area**

### DIMENSIONS

5.0m x 8.6m  
3.1m x 4.6m  
1.0m x 13.0m  
4.5m x 9.8m  
**121.7m<sup>2</sup>**

APARTMENT	TYPE	SIZE	FLOOR	SELF FINANCE	MORTGAGE
A905	12	121.7	NINTH	\$328,250	\$336,250

## TYPE 13



### ROOMS

Living / Kitchen  
Bedroom  
Balcony  
**Total Area**

### DIMENSIONS

6.4m x 6.3m  
4.0m x 6.3m  
1.0m x 20.9m  
**122.6m<sup>2</sup>**

APARTMENT	TYPE	SIZE	FLOOR	SELF FINANCE	MORTGAGE
A906	13	122.6	NINTH	\$330,500	\$338,500

## UNIT LOCATION



# TWO BEDROOM APARTMENTS

---

Epitome of contemporary style and comfort.



# TWO BEDROOM APARTMENTS

## TYPE 1 ●



ROOMS	DIMENSIONS
Living / Kitchen	4.3m x 6.3m
Master Bedroom	3.0m x 6.3m
Bedroom 2	3.0m x 6.3m
Balcony	1.0m x 16.3m
<b>Total Area</b>	<b>87.4m<sup>2</sup></b>

APARTMENT	FLOOR	TYPE	SIZE	SELF FINANCE	MORTGAGE
A113	FIRST	1	87.4	\$218,500	\$229,500
A114	FIRST	1	87.4	\$218,500	\$229,500
A213	SECOND	1	87.4	\$221,500	\$232,500
A214	SECOND	1	87.4	\$221,500	\$232,500
A312	THIRD	1	87.4	\$224,500	\$235,500
A313	THIRD	1	87.4	\$224,500	\$235,500
A411	FOURTH	1	87.4	\$227,500	\$238,500
A412	FOURTH	1	87.4	\$227,500	\$238,500
A510	FIFTH	1	87.4	\$230,500	\$241,500
A609	SIXTH	1	87.4	\$233,500	\$244,500
A708	SEVENTH	1	87.4	\$236,500	\$247,500

## TYPE 2 ●



ROOMS	DIMENSIONS
Living / Kitchen	7.7m x 6.3m
Master Bedroom	3.7m x 6.3m
Bedroom 2	3.4m x 6.3m
Balcony	1.0m x 17.4m
<b>Total Area</b>	<b>137.2m<sup>2</sup></b>

APARTMENT	FLOOR	TYPE	SIZE	SELF FINANCE	MORTGAGE
A101	FIRST	2	137.2	\$273,100	\$284,100
A301	THIRD	2	137.2	\$279,100	\$290,100
A501	FIFTH	2	137.2	\$286,100	\$297,100
A701	SEVENTH	2	137.2	\$294,100	\$305,100
A901	NINTH	2	137.2	\$299,600	\$310,600

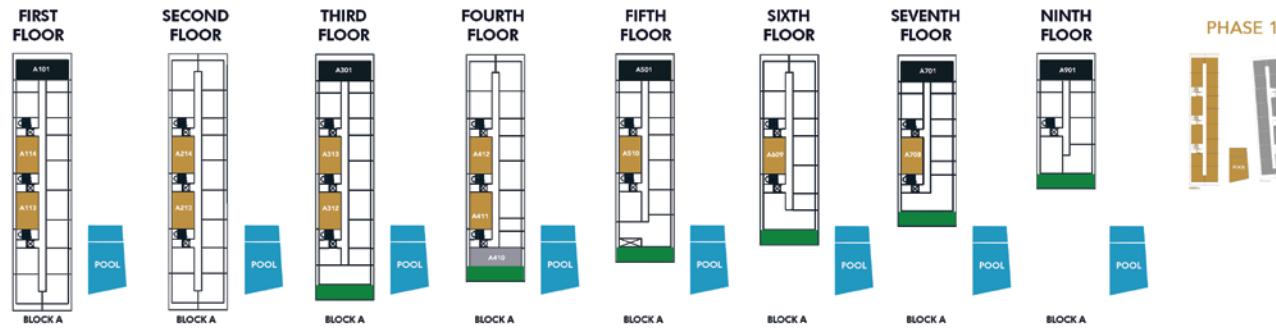
## TYPE 3 ●



ROOMS	DIMENSIONS
Living / Kitchen	7.2m x 5.1m
Master Bedroom	4.5m x 5.1m
Bedroom 2	4.0m x 5.1m
Balcony	1.0m x 15.5m
<b>Total Area</b>	<b>177.7m<sup>2</sup></b>

APARTMENT	FLOOR	TYPE	SIZE	SELF FINANCE	MORTGAGE
A410	FOURTH	3	177.7	\$309,850	\$320,850

## UNIT LOCATION



# TWO BEDROOM APARTMENTS

## TYPE 4 ●



ROOMS	DIMENSIONS
Living / Kitchen	7.7m x 5.6m
Master Bedroom	3.7m x 5.6m
Bedroom 2	3.4m x 5.6m
Balcony	1.0m x 10.3m
Private Garden	17.4m x 4.5m
<b>Total Area</b>	<b>180.6m<sup>2</sup></b>

APARTMENT	FLOOR	MORTGAGE	TYPE	SIZE	SELF FINANCE	MORTGAGE
A310	THIRD	\$83,000	4	180.6	\$322,500	\$333,300

## TYPE 5 ●



ROOMS	DIMENSIONS
Living / Kitchen	7.2m x 5.6m
Master Bedroom	3.1m x 5.6m
Bedroom 2	4.5m x 5.1m
Balcony	1.0m x 15.5m
Private Garden	17.5m x 4.5m
<b>Total Area</b>	<b>182.3m<sup>2</sup></b>

APARTMENT	FLOOR	TYPE	SIZE	SELF FINANCE	MORTGAGE
A1001	TENTH	5	182.3	\$338,450	\$349,450

## TYPE 6 ●

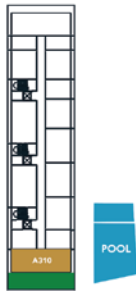


ROOMS	DIMENSIONS
Living / Kitchen	8.6m x 5.1m
Master Bedroom	6.3m x 5.1m
Bedroom 2	6.3m x 3.8m
Balcony	1.0m x 112.0m
Private Garden	17.5m x 4.5m
<b>Total Area</b>	<b>207.6m<sup>2</sup></b>

APARTMENT	FLOOR	TYPE	SIZE	SELF FINANCE	MORTGAGE
A308	FIFTH	6	207.4	\$388,050	\$399,050
A806	EIGHTH	6	207.6	\$399,050	\$408,050

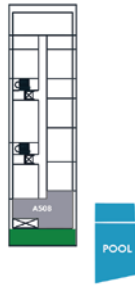
## UNIT LOCATION

### THIRD FLOOR



BLOCK A

### FIFTH FLOOR



BLOCK A

### EIGHTH FLOOR



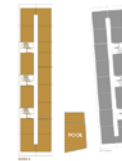
BLOCK A

### TENTH FLOOR



BLOCK A

### PHASE 1



\*Images displayed are indicative of the style only and the finished product may differ



# THREE BEDROOM APARTMENTS

---

Relaxing setting  
for you and your family.



# THREE BEDROOM APARTMENTS

## TYPE 1



ROOMS	DIMENSIONS
Living / Kitchen	6.1m x 6.1m
Master Bedroom	4.6m x 5.2m
Bedroom 2	4.5m x 5.1m
Bedroom 3	3.1m x 7.2m
Balcony	1.0m x 15.5m
Private Garden	17.4m x 4.5m
<b>Total Area</b>	<b>221.0m<sup>2</sup></b>

APARTMENT	FLOOR	TYPE	SIZE	SELF FINANCE	MORTGAGE
A707	SEVENTH	1	221	\$350,500	\$365,500

## TYPE 2



ROOMS	DIMENSIONS
Living / Kitchen	7.2m x 5.4m
Master Bedroom	4.5m x 5.4m
Bedroom 2	3.1m x 6.9m
Bedroom 3	5.2m x 3.5m
Balcony	1.0m x 21.0m
Private Garden	17.4m x 4.5m
<b>Total Area</b>	<b>231.3m<sup>2</sup></b>

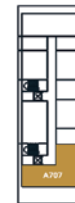
APARTMENT	FLOOR	MORTGAGE	TYPE	SIZE	SELF FINANCE	MORTGAGE
A608	SIXTH	\$497,000	2	231.3	\$353,300	\$368,300

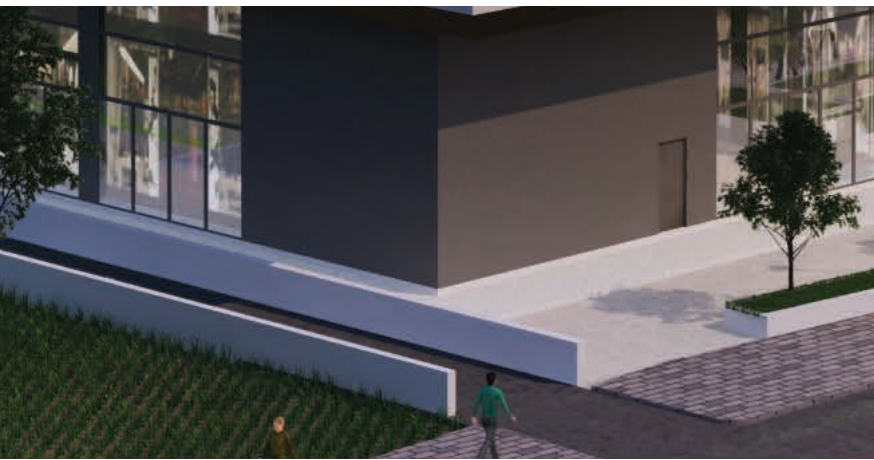
### UNIT LOCATION

#### SIXTH FLOOR



#### SEVENTH FLOOR





CAPEMAY PROPERTIES is a full services real estate company, providing good return on investments for our clients. CAPEMAY properties established in 2008 is a family run business focused on delivering quality buildings at competitive prices, good rental yields for investors and excellent customer service.

With a passion for excellence at what we do, we have an ambition to redefine urban living, change the skyline of Accra and thrive to secure CAPEMAY Properties as one of the globally recognized names in the real estate industry. At CAPEMAY Properties, we best refer to our clients and products simply as our Jewel. As we looked closely into the precious stone family and the best describing our Jewel. We found SAPPHIRE; a transparent precious stone, typically blue.

It is the most precious and valuable blue gemstone and a very desirable gemstone due to its excellent color, hardness, durability, and luster.

These attributes best represent what CAPEMAY Properties stand for as a company- transparency with our clients and treating them with the excellent customer service and delicateness just as the precious gemstone that they are, hardness and durability depicting the quality and steadiness of our products and luster for our finishing, mirroring beauty, purity and luxury. This is what we promise all our clients.

**CONTACT US ON**  
**+233 50 169 0234**  
[www.capemaypropertiesgh.com](http://www.capemaypropertiesgh.com)

# PAYMENT PLANS

## SELF FINANCE

		TYPE 1	TYPE 2	TYPE 3	TYPE 4
RESERVATION	DATE	\$3000	\$3000	\$3000	\$3000
FIRST PAYMENT	3 WEEKS FROM RESERVATION	11%	15%	30%	60%
SECOND PAYMENT	3 MONTHS FROM FIRST PAYMENT	11%			
THIRD PAYMENT	6 MONTHS FROM FIRST PAYMENT	11%			
FOURTH PAYMENT	9 MONTHS FROM FIRST PAYMENT	11%	15%	15%	
FIFTH PAYMENT	12 MONTHS FROM FIRST PAYMENT	11%	15%	15%	
SIXTH PAYMENT	15 MONTHS FROM FIRST PAYMENT	11%	15%	15%	
SEVENTH PAYMENT	18 MONTHS FROM FIRST PAYMENT	11%	15%	15%	
EIGHTH PAYMENT	21 MONTHS FROM FIRST PAYMENT	11%	15%		
FINAL PAYMENT	UPON COMPLETION	12%	10%	10%	40%

## MORTGAGE PLAN

		TYPE 1	TYPE 2	TYPE 3	TYPE 4
RESERVATION		\$3000	\$3000	\$3000	\$3000
FIRST PAYMENT		5%	10%	20%	30%
SECOND PAYMENT		5%			
THIRD PAYMENT		5%	10%		
FOURTH PAYMENT		5%			
FIFTH PAYMENT		5%	10%	10%	
SIXTH PAYMENT		5%			
SEVENTH PAYMENT		5%	10%		
EIGHTH PAYMENT		5%			
FINAL PAYMENT		55%	60%	70%	70%



**THE SIGNATURE**  
[www.signaturegh.com](http://www.signaturegh.com)

