



Rahel Surshi, Founder
rahel@sortrace.com

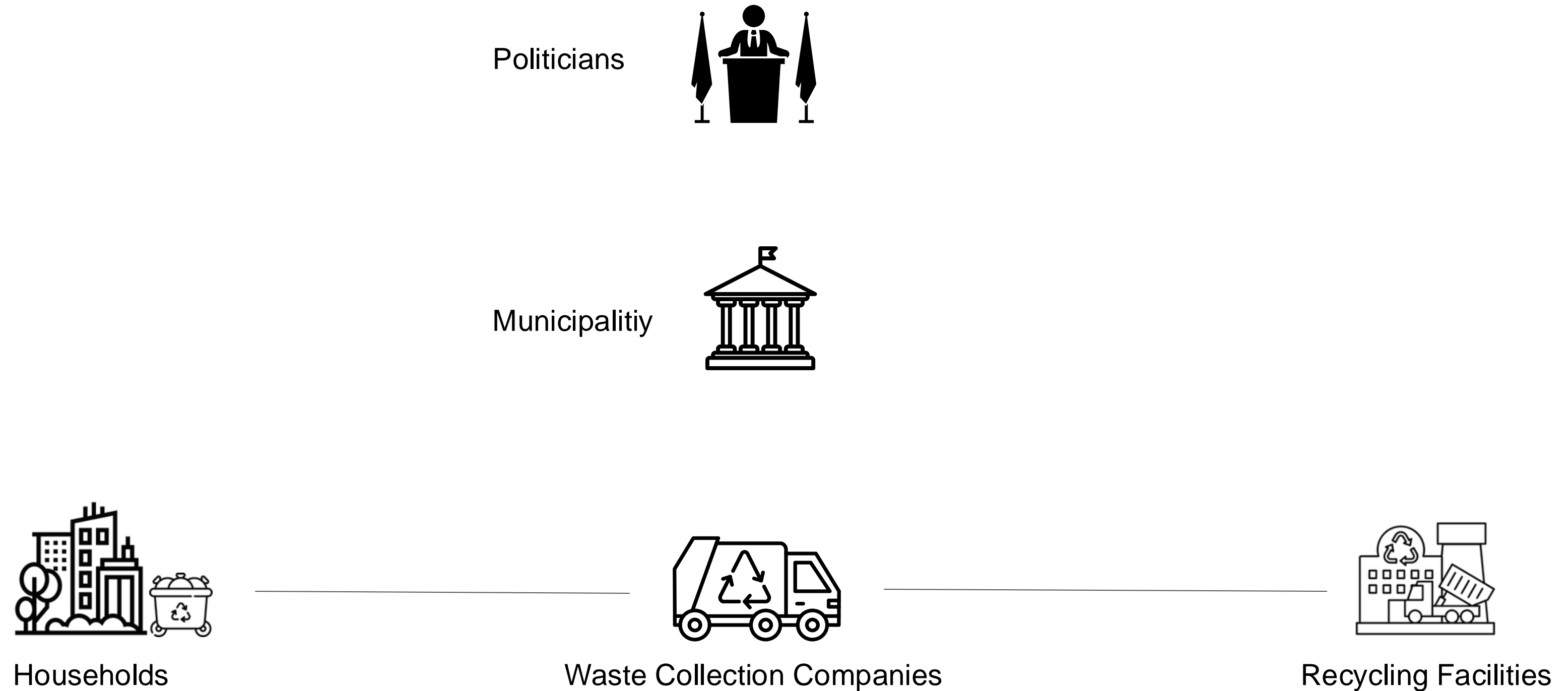


Increased Regulatory Pressure on the Municipalities

EU Waste Framework Directive (Directive 2018/851)

*“EU mandates that **each member state must** define how to **reduce waste contamination** and enforce clear **consequences for households that fail to sort correctly.**”*

Municipal Obligations in Waste Collection



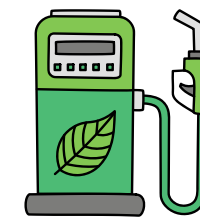
What happens with the waste from households?



Food waste



Biogas facility



Biogas



Residual waste



Recycling facility



Recycled



Mis-sorting



Landfill

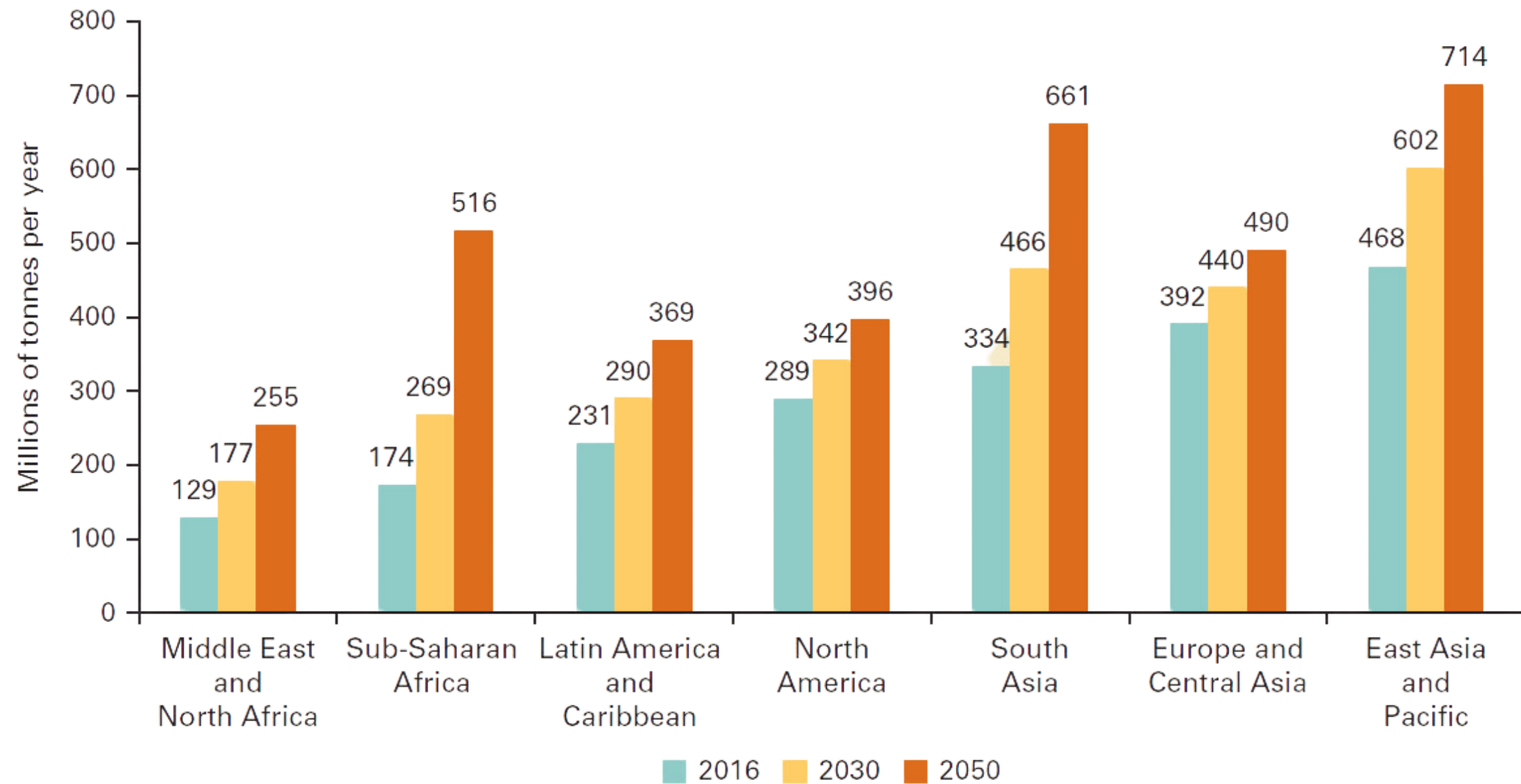


Environmental damage

How Mis-Sorting Hurts the Industry

- ✗ **Increased Re-sorting Costs**
- ✗ **Increased CO2 Emissions**
- ✗ Missed Circular Economy Opportunities
- ✗ Higher Landfill Disposal Fees
- ✗ **Loss of Recycling Revenues**
- ✗ Increased Carbon Emissions Penalties
- ✗ Increased Operational Costs
- ✗ Increased Cleaning and Maintenance Costs
- ✗ Non-Compliance with Waste Legislation
- ✗ **Reduced Biogas Production Efficiency**
- ✗ Increased Cleaning and Maintenance Costs
- ✗ **Reduced Heat Production**
- ✗ Public Complaints and Reputation Damage
- ✗ Loss of Subsidies for Recycling Targets

Household Waste Growth Across Regions



Source: <https://datatopics.worldbank.org/what-a-waste/index.html>

Municipal Strategies to Reduce Contamination

Educate Citizens



Fining Citizens

Rely on drivers for manual data collection



Inefficient

Infrequent

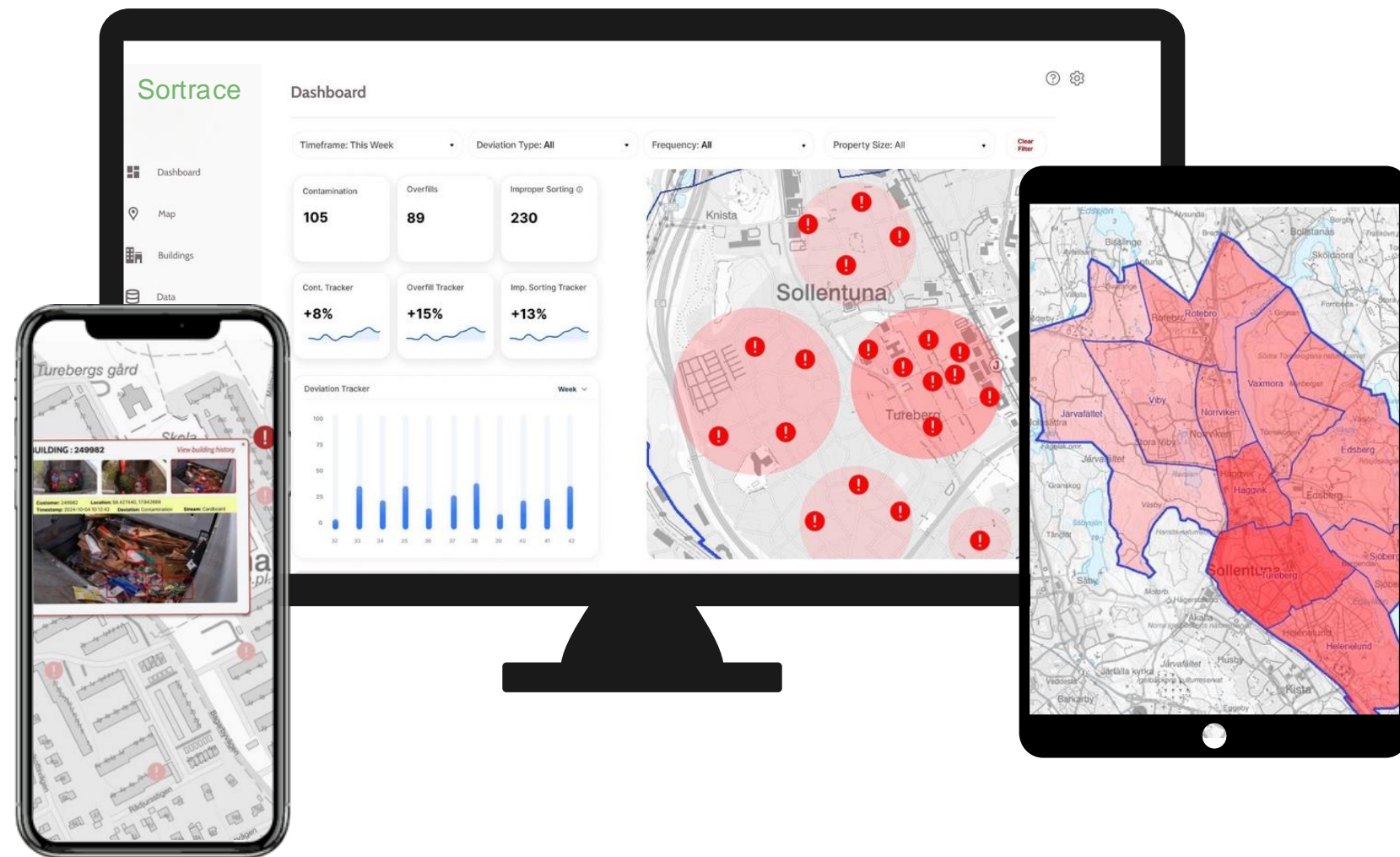
Inaccurate

***“We think less than 1% of waste contamination
is beign reported by the drivers today”***

Waste Manager
Mid size municipality in Sweden

The Solution

AI-powered Analytics for better decision making



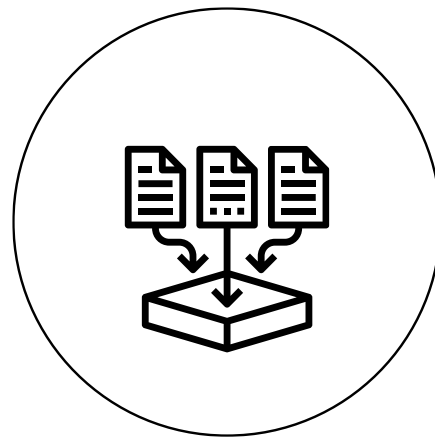
Visualization

Insights

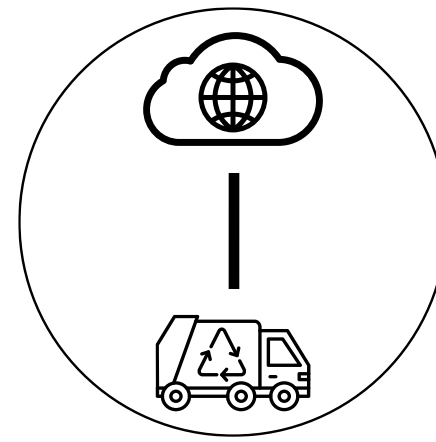
Reporting

Integration

Simple set-up process for AI Analysis



Data collection from The Truck



Automated Data Transfer



Analyse & Visualize The Data

The Solution

Automating Contamination Detection with AI



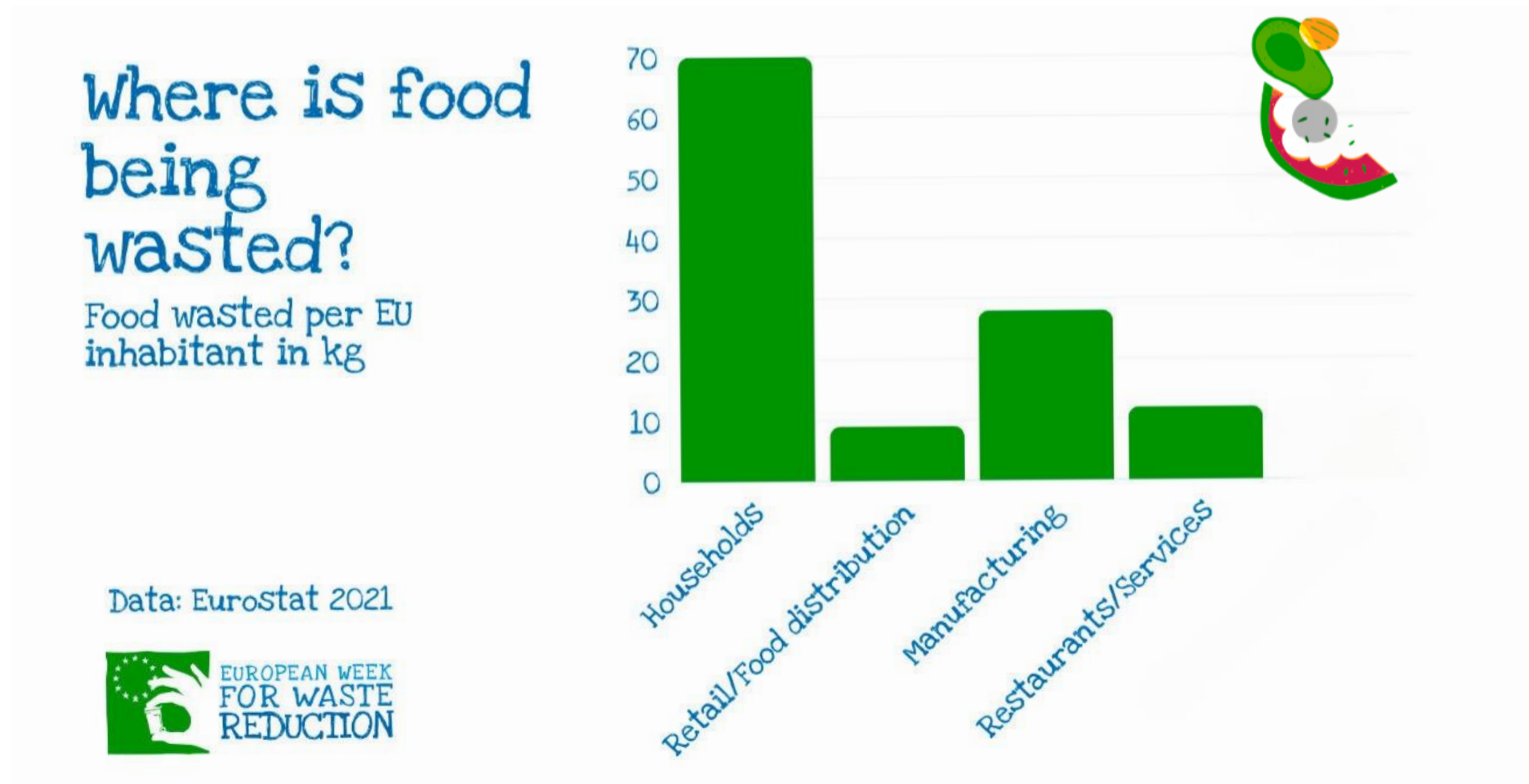
The Solution

Developing AI Model for Waste Collection



Deliver value through reliable data

Households: The Largest Source of Food Waste



Opportunities

One Platform, Infinite Opportunities



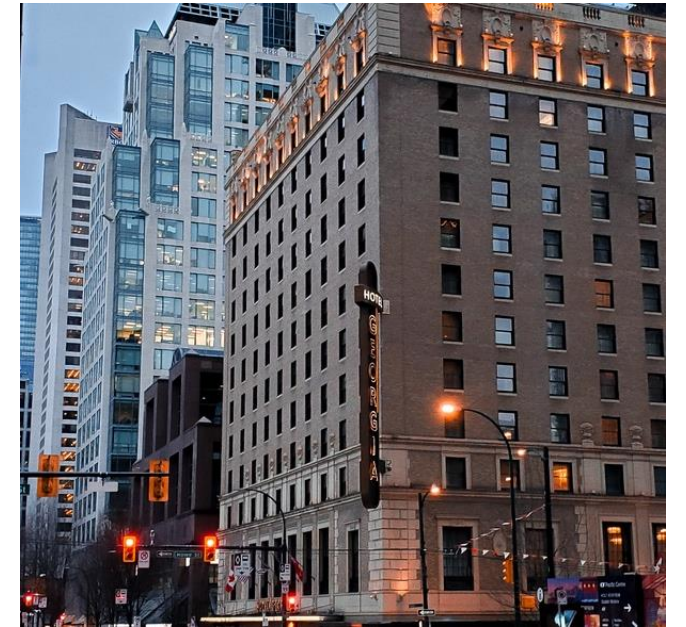
Waste Management Companies



Real Estate and Property Owner



Manufacturing and Industrial



Retail and Hospitality

Why should I care? I am from France...

- **Low Recycling Efficiency**
- **Under the same EU Regulations**
- **Economic Impact**
- **Environmental Responsibility**

**Recycling rate:
45%**

The recycling rate is far from
the EU's 55% target (2025)
and France's 65% goal

Thank you!

Rahel Surshi, Founder
rahel@sortrace.com
www.sortrace.com

