



# PRESENTATION

## April 2022

**Rémi GUIGUE**  
Country Director  
FOSELEV Moçambique  
[geral@foselevmozambique.fr](mailto:geral@foselevmozambique.fr) / +248 84 255 79 71

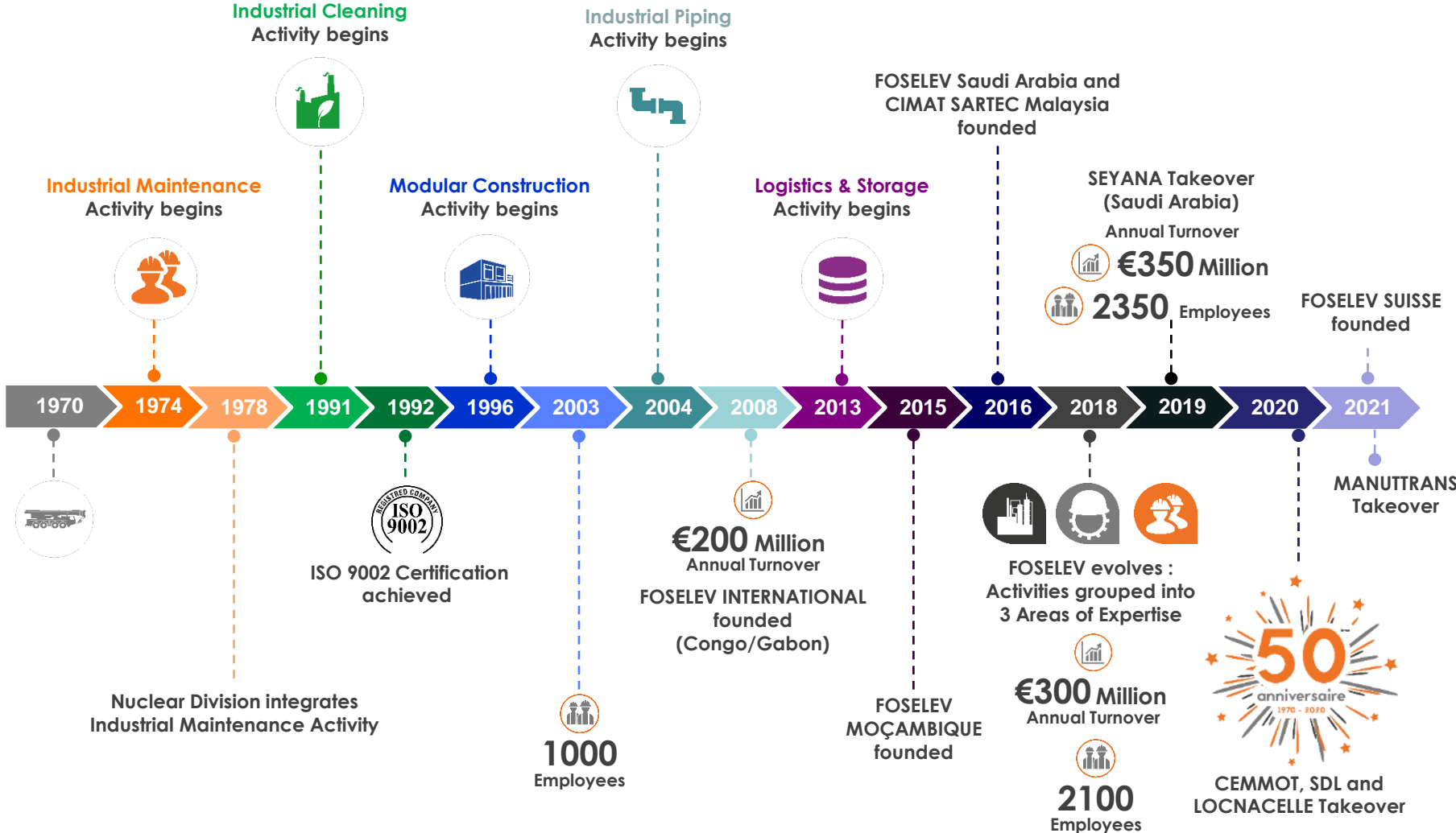
**Adamo Sulemane**  
Comercial Manager  
FOSELEV Moçambique  
[comercial@foselevmozambique.fr](mailto:comercial@foselevmozambique.fr) / +258 84 719 43 77



# ABOUT FOSELEV Group

## Company Timeline

- FOSELEV is an independent group founded in 1970 in France.
- As an industrial service provider, the Group develops its industrial service offer in France and on the international market.



# WHO IS FOSELEV Group ?

An industrial group, a specific service offer and dedicated resources

## KEY FIGURES



**2400+**  
workers



**110+**  
Implantations



**351 M€**  
Turnover



### SERVICES & LOGISTIC



**870**

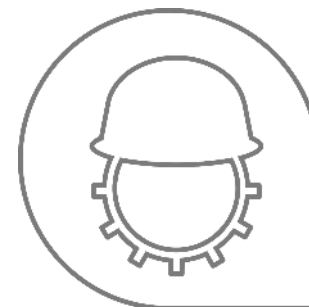


**67**



**179 M€**

Lifting - Handling, Transport Personnel lifting, Training, Modular constructions, Logistics Storage



### MAINTENANCE



**1060**

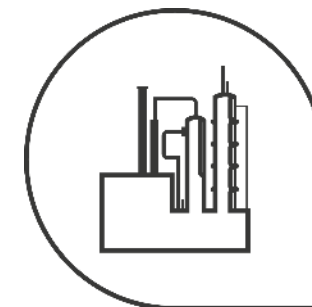


**34**



**108 M€**

Maintenance operation Maintenance contract, Repair, maintenance manufacturing, Factory shutdown in EPC Industrial cleaning, Environment



### CONTRACTING



**470**



**13**



**64 M€**

Unit builds, with Heavy & combined lifting, Complex handling Multi-trade projects, Process sets



# THE SECURITY

The means devoted to this fundamental pillar

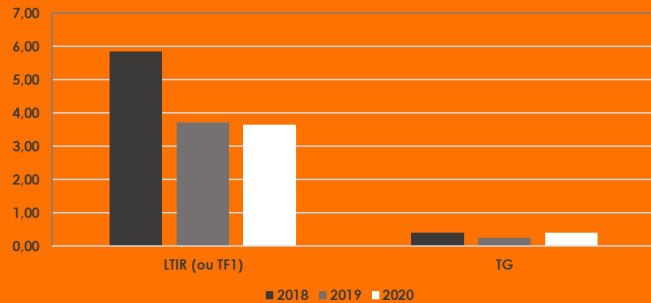
Service QSSE + Correspondants in our subsidiary company  
**44 dedicated people**

Dedicated annual Budget  
**+ 2 million €**

Certifications  
**Obtaining et maintaining**



Improvement QSSE Plan  
**Objectives & Monitoring**



Industry key	2018	2019	2020
LTIR (ou TF1)	5,85	3,72	3,64
TG	0,40	0,25	0,40





# SERVICES & LOGISTICS

Local Service Offers

## **Lifting, Transport, Handling, Transfer**

Mobile cranes , Truck-mounted, and Gantry Cranes

## **Personnel Lifting**

Aerial Work Platforms up to 90 meters

## **Storage**

Bulk Liquids

## **Modular Construction**

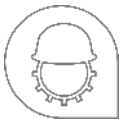
Rental and Sale of Prefabricated Modules

## **Training**

Safety – Lifting and Handling Trades







# MAINTENANCE

Maintenance partnered with Manufacture

## Sectors

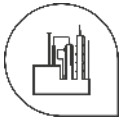
- 🔧 Industry
- 🔧 Nuclear
- 🔧 Oil & Gas
- 🔧 Marine
- 🔧 PW/ Civil Engineering

## Trades

- 🔧 Piping/Welding
- 🔧 Hydraulic Mechanics
- 🔧 High-Pressure Cleaning
- 🔧 Electricity, Automation, Instrumentation







# CONTRACTING

Expertise & Competence combined

- 🏭 **Unit Construction**
- 🏭 **Heavy Lifting & Complex Handling Operations**
- 🏭 **Multi-trade Projects**
- 🏭 **Process Integration, EPC**



## Our activities in Mozambique

- Lifting-Handling
- Abnormal and normal transport
- Equipment maintenance and breakdown service
- Lifting studies
- Technical assistance (special studies for complexes operations, supervision)
- yard storage / handling
- Operators-Drivers training



2,5 MS USD



50



22



### Assets in Mozambique

- 8 mobile cranes from 30 to 220T
  - 1 crane truck 33T/M
  - 4 forklifts from 2.5 to 3.5T
  - 1 telehandler 3,5 Ton
  - 8 horses trucks 6\*4 with flat bed trailer 30Ton and low bed ups to 50Ton
- All our activities are under the strict respect of local content rules





**Creation date:** 02/2015

**Location:** Matola (2015), Pemba (2020) & Temane (2022)

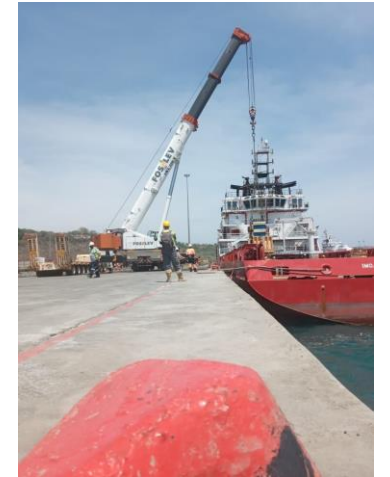
**Number of workers:** 50

**Activities:** Mobile crane hire from 35ton until 220 ton  
 Equipment hire  
 Road haulage normal and abnormal cargo  
 Technical assistance

## Assets available:

### 1. Mobile crane hire with trained and certified operator and rigger

- 1\*30 Ton rough terrain crane Grove RT530
- 1\*35 Ton all terrain crane Grove GMK 2035
- 2\*55 ton all terrain crane Grove GMK 3055
- 1\*80 ton all terrain crane Grove GMK 4080-1
- 1\*100 ton all terrain crane Grove GMK 5095
- 1\*100Ton all terrain crane Liebherr LTM 1100-4.2
- 1\*220Ton all terrain crane Grove GMK 5520



## 2. National and international transportation (road haulage)

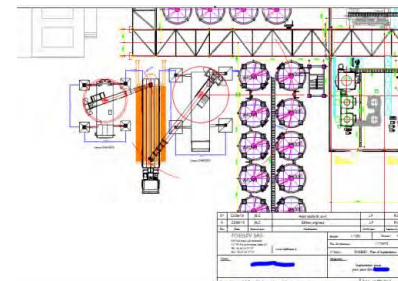
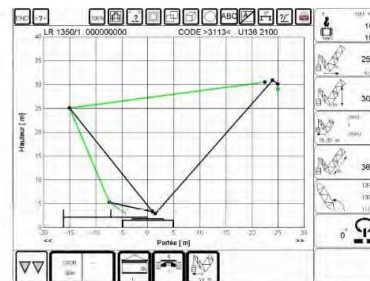
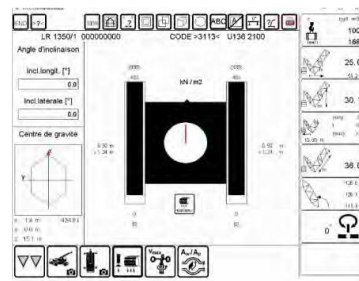
- 6 horses truck 6\*4 with 3 axles flatbed trailer (10units) 6m and 12 m and (2) low bed trailer 3 and 4 axles until 40Ton
- (6) 40-foot and (2) 20-foot container for transportation of sensitive cargo
- 8\*4 Crane truck with 33 m/T capacity (FASSI330)



- Telehandler 4\*4 – 3.5 Ton \* 14 m
- Various Forklift from 2.5T until 16 Ton



## 3. Production of lifting studies/plan





**SOME OF OUR REFERENCES**



**Combined lifting of a 160m length water pipeline with 7 cranes**

**Water pipeline construction**

**Mbomba – Under Nkomatti River**



**Construction of a new factory in Marracuene**

Mobilization of 15 machines (mobile cranes from 35 to 100T, arm trucks, nacelle, forklifts)



**Exceptional transport for the construction of a HEINEKEN factory**

Transport of 20 FST tank from Maputo Porto until bobole with 12m length and 4.5m diameter-15T, Lifting and erection at arrival

**SOME OF OUR REFERENCES**



**220Ton cement mill lifting using gantry system at Limak Cement factory**



**Limak cement factory construction**  
Mobilization of 6 machines (mobile cranes from 35 to 100T, cherry pickers, forklifts)



**FST Tank erection tandem lifting Heineken factory**



# FOSELEV

## MOÇAMBIQUE



---

**Thank you**

---

**NOUS VOUS REMERCIONS  
VIVEMENT POUR VOTRE  
ATTENTION**





FOSELEV SAS  
530, Rue Mayor de Montricher  
PA Les Milles – BP 291 000  
13798 Aix-en-Provence  
T : 04 42 24 57 57 | communication@foselev.fr

[www.foselev.com](http://www.foselev.com)

