



HANSEN

♦ there is life after weekend

AGENDA

1. ABOUT US

2. VALUES

3. SERVICES

4. ERGONOMICS

5. PROJECT

6. CLIENTS

7. FRANCHISE

8. CONTACT

ABOUT US

The Hansen company was established in 2003 in Romania and has a **vast experience of over 20 years in the industry of designing and arranging work spaces.** We specialize in providing innovative services, offering our clients **customized solutions to transform workspaces into productive and inspiring environments.**

Our business is based on the concept that **ergonomics and design can significantly influence efficiency and creativity in the work environment.**

We work closely with each client to identify the right furniture and **solutions that align with their business model and organizational culture.** We approach each project with **attention to detail and expertise,** ensuring that **each workspace created reflects the vision and specific needs of our clients.**



"The office where you spend most of your day should reflect your personality, inspire you in your work and be a space you want to return to."



VALUES

- ◆ **COLLABORATION**
We bring customers to the center of our actions, establishing long lasting relationships based on partnership and trust.
- ◆ **PASSION**
We are passionately dedicated to the mission of creating high quality design that inspires and brings beauty to every space.
- ◆ **CREATIVITY**
We understand that every project is unique and requires creative approaches. Because design always means finding the perfect solution.
- ◆ **PERFECTIONISM**
We constantly seek evolution, both as an organization and as individuals, to provide the highest quality services and products.



SERVICES

◆ OFFICE DESIGN - Perfecting the workspace

The basis of our services is the fact that we select premium office furniture. Through our design concepts, we aim to **improve productivity and efficiency in workspaces**, masterfully combining **technical and artistic approaches to achieve an optimal result.**

◆ PREMIUM FURNITURE

All Hansen products stand out for their strict adherence to the criteria of **ergonomics, quality, functionality and design.**

◆ OFFICE MOVING: Nationwide logistics expertise

Our department can successfully manage moving projects, providing **high-quality services throughout the country.**



SERVICES

◆ PROFESSIONAL CONSULTING IN ERGONOMICS:

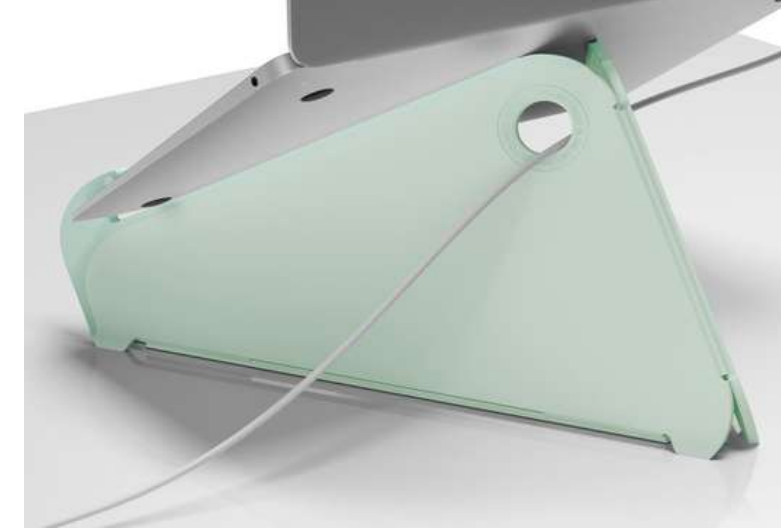
We offer high-quality consulting services and free ergonomics training for your staff, with the aim of **promoting health and increasing productivity in the work environment.**

◆ PROFESSIONAL MAINTENANCE: Free Annual Checkups

To ensure that all projects are properly maintained, we offer **free annual inspections for 3 years after project completion.**

◆ COMPLETE FIT

The Hansen team is ready to assist with office fit-out, bringing the necessary **expertise in electrical systems, carpet installation and space optimization** to create a functional and efficient work environment.



BENEFITS

◆ THE EXPERIENCE

Working for over 20 years in the field and having over 2500 satisfied clients, we have accumulated a diversified portfolio of clients (multinationals, law firms, medical clinics), with a balanced range of products.

◆ ADAPTABILITY

Working with a variety of manufacturers, we adapt to any space, individual requirements and budget.

◆ TEAM

Our team of experts dedicated to each project offers services and products to the highest standards.

◆ TIME

We deliver products promptly and on time, because we know how valuable time is.



ERGONOMICS

Today, most of us spend hours in front of computers. Unfortunately, we often find ourselves in an incorrect position, which can lead to **back pain, discomfort and even headaches**. Therefore, **it is essential to organize our workspace in an ergonomic way**, whether we work in a multinational, a start-up or are freelancers working from home.

A key element in ensuring an ergonomic workspace is **choosing an appropriate chair**. It is important to opt for an ergonomic chair that offers **multiple adjustments to perfectly fit our body shape** and at the same time **encourage us to work in a correct position**.

The HANSEN product portfolio comes to our aid with various solutions, including **height-adjustable desks, footrests and laptop stands**.



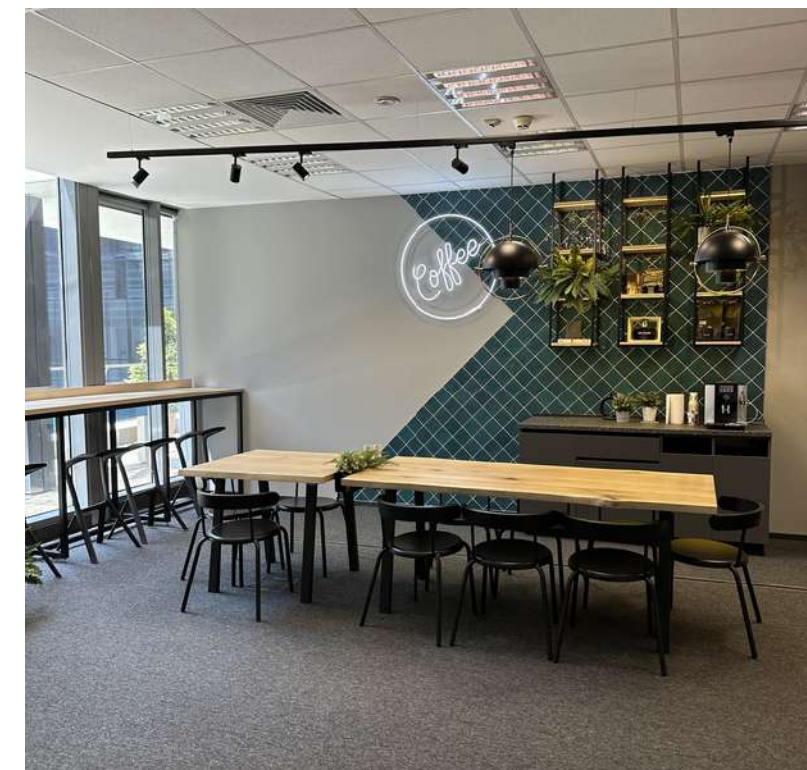
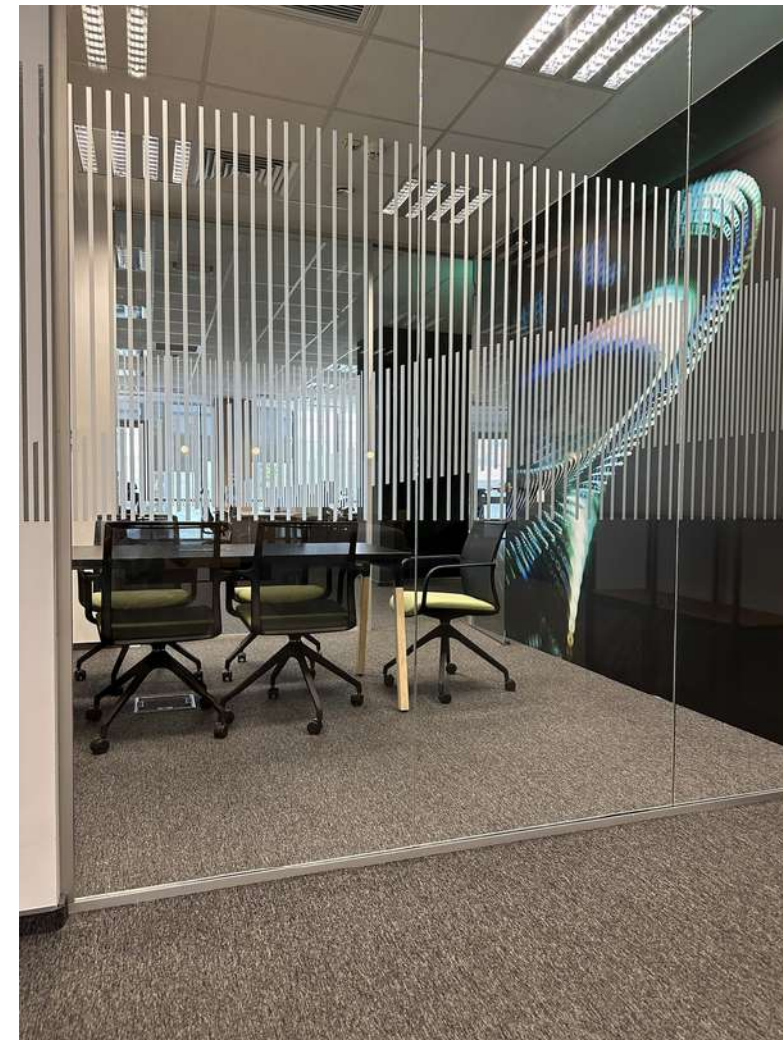
MULTIVERSE X

Transforming an office into an oasis of creativity

Multiverse X represents an interior design project for a **500 sqm office located in the heart of Cluj**. This transformation has been carried out with care and attention to detail, from the entrance to the premises to the work areas.

The services offered within this project included:

- **Interior design**, in collaboration with Vlad Mureşan (Periskop Studio), to transform the existing space into a location that inspires and stimulates creativity.
- **Custom office furniture** including workspaces, reception, meeting room, open space and lounge area to perfectly suit the needs of the team.
- **Furniture for the cafe**, made to order.
- **Branding elements** to add identity to the space.
- **Space lighting**, to create a pleasant and functional atmosphere in every corner of the office.
- **The lounge area** was designed as a dynamic space for relaxation, where employees can take a break and recharge their batteries in an environment full of creativity.



SALCEF

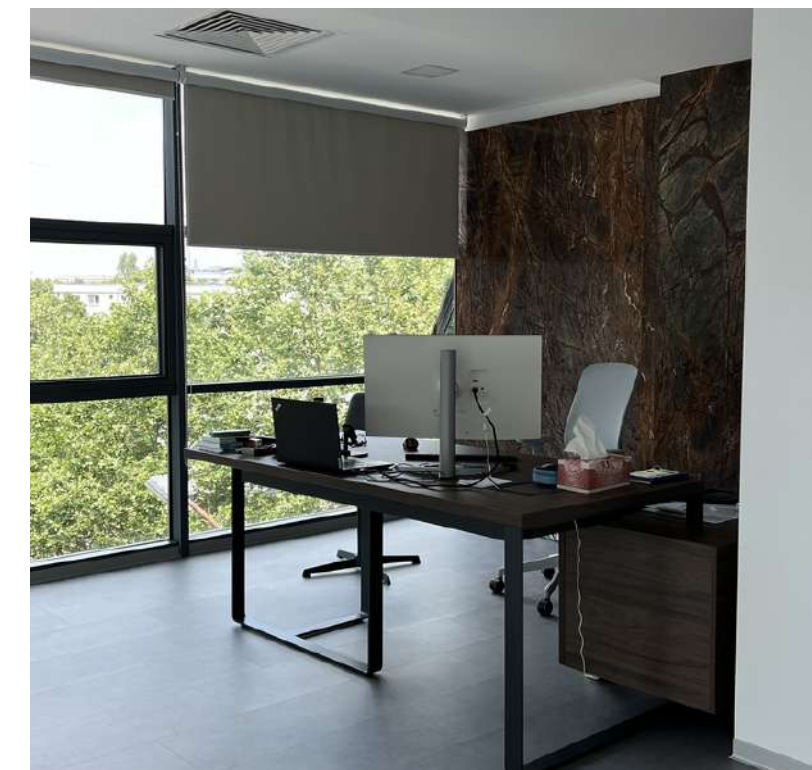
Elegance and modernity in the heart of Bucharest

The development project for Salcef, located in Bucharest with an area of **approximately 300 sqm**, was an inspired challenge.

We designed this space with attention to every detail, with **the goal of creating an elegant environment while maintaining a contemporary and functional look.**

The works carried out within this project included:

- A significant transformation of the space began with the **replacement of the old floor with a modern one, the replacement of the doors with glass doors**, for a better circulation of natural light and a feeling of a wider space, **the addition of blinds.**
- **Branding:** Salcef's specific branding has been integrated into the design to emphasize the company's identity.
- **Custom furniture:** To create a functional and stylish work environment, **we designed and integrated custom furniture for the different areas of the office** - from reception and individual desks to the meeting room and cafeteria area.



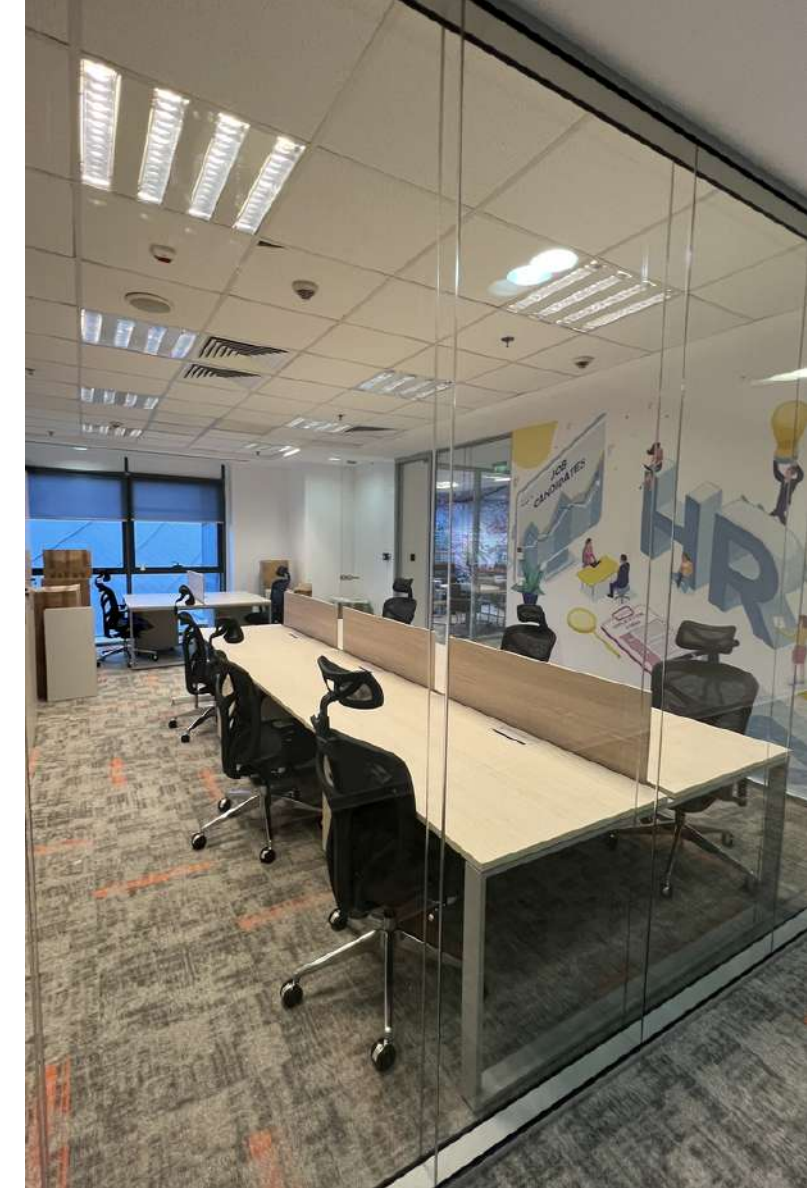
YUSEN LOGISTICS

The office of the future in Bucharest

The new Yusen Logistics headquarters, with an area of 800 sqm in Bucharest, is based on the idea that **an open and fluid office space encourages fast and frequent interactions between teams and promotes "more expressive relationships" between colleagues.**

The works carried out within this project included:

- **Reception furniture**
- **Versatile workstations:** Implementing workstations with non-textile dividers and efficient cable management solutions.
- **Ergonomic Chairs:** Provision of ergonomic chairs to ensure employee comfort and efficiency.
- **Executive Offices:** Equipping executive offices with quality furniture, including appropriate desks and chairs.
- **Meeting areas:** Creating functional meeting spaces.
- **Document Management:** Implementing efficient storage and archiving solutions such as files.
- **Canteen Area:** A canteen area with tables, chairs and kitchen furniture, for employee breaks and social interactions.
- **Essential accessories:** Providing practical accessories to ensure functionality and comfort in the office.



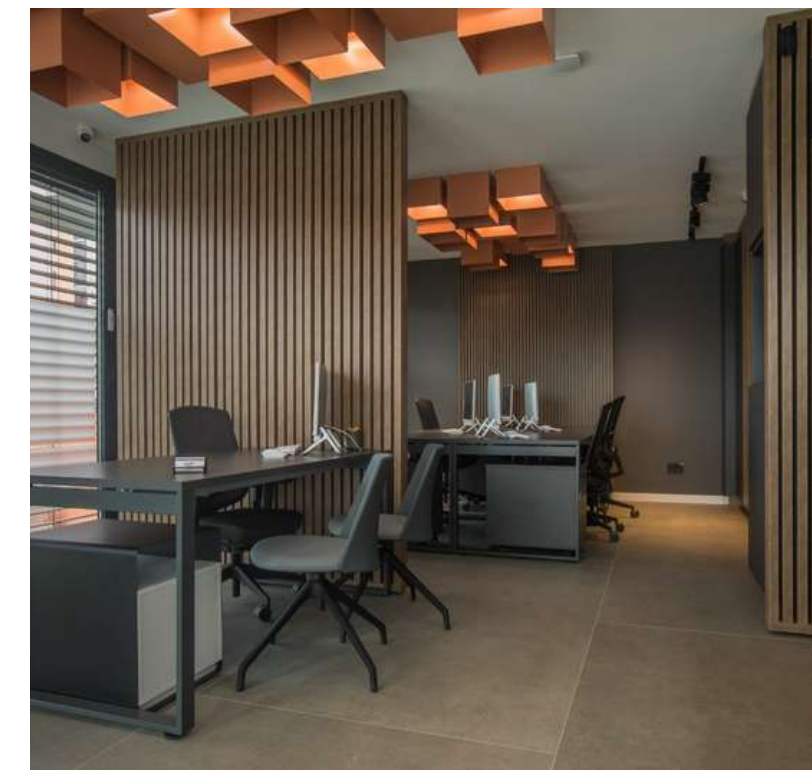
AWR LEASE SERVICES

Elegance on 200 square meters in Timisoara

AWR Lease Services, the space development **project in Timișoara, with an area of 200 sqm**, represented a challenge, given the space limitations. However, we managed to turn this limitation into an advantage by **focusing on a modern aesthetic while maintaining an open and welcoming space.**

The works carried out within this project included:

- **Executive chair:** Selecting a stylish and comfortable executive chair for a special workspace.
- **Operator chairs:** Provision of ergonomic office chairs.
- **Seating for visitors:** Equipping reception and meeting areas with comfortable seating for visitors.
- **Operational desks:** Choosing the right operational desks to maximize the efficiency of the available space.
- **Pedestals:** Implementation of pedestals for organizing documents and office equipment.



CLIENT PORTFOLIO



ALPHA BANK

citibank

PROVIDENT

**Raiffeisen
BANK**



LUKOIL

GOODYEAR



SUBARU

alka



xerox



OOO Ringier

mbt
l'impossible



Adobe

FUJITSU



Red Bull



THE HANSEN FRANCHISE

The opportunity to be part of our family

For over two decades, we have developed a solid portfolio of clients and a network of external suppliers, which has brought us valuable experience and placed us on a distinct position in the Romanian market.

Today, **we are determined to extend these values and principles through our partners - the HANSEN franchises.**

By joining the Hansen family, you will benefit from:

- **Our expertise:** Access to our extensive experience in office design and ergonomics, as well as our continuous development resources.
- **Strong brand:** Benefiting from the prestige and recognition of a solid brand with a contemporary and reliable image.
- **Support and Training:** We offer full support and training to help you grow your business efficiently and profitably.
- **Extended Network:** Entry into an extensive network of Hansen franchises, where you can share experiences and collaborate with other passionate entrepreneurs.

EXISTING FRANCHISES: Cluj since 2018; Timisoara since 2019.



CONTACT



BUCHAREST

Izbiceni 94 sector 1

shop@hansen.ro

(+40) 767.970.361

CLUJ

Taietura Turcului 47 TETAROM,
Building A2, 2nd floor

hunor@hansen.ro

[\(+40\) 749.459.641](tel:+40749459641)

TIMISOARA

Johan Heinrich Pestalozzi 22,
1st floor

loredana@hansen.ro

[\(+40\) 726.056.590](tel:+40726056590)