

Greetings from Akyra Thonglor Bangkok!

Please kindly see Test & Go package as details below;

Akyra Thonglor Bangkok - 1 Day Test & Go package include;

- Accommodation for one night stay with an inclusive of breakfast
- Complimentary one-way private limousine transfer from airport to Samitivej hospital to the hotel
- Complimentary late check out up to 4 PM or until the test result is confirmed
- Drive Thru RT-PCR test 1 time made by the approved hotel's partner hospital

Deluxe Room (36 sqm)

- Single Deluxe Room at THB 8,000 net/room

- Double Deluxe Room at THB 10,200 net/room



Premier Room (61 sqm)

- Single Premier Room at THB 8,500 net/room

- Double Premier Room at THB 10,700 net/room



Deposit Policy:

Full Pre-Payment required at the time of the booking

Cancellation Policy:

Non Refundable Full Pre-payment required at the time of booking

88/333 Eight Thonglor Building, Sukhumvit 55 (Thonglor), Sukhumvit Road
North Klongtan, Wattana, Bangkok 10110, Thailand
T +66 (02) 090 9000 | F +66 (02) 090 9090
E fd.akt8@theakya.com | www.theakya.com

Test & Go 1 Night and 5 Nights Package



ROOM TYPE	SIZE (SQ. M.)	1 Night Package 1 st Test		1 Night Package 2 nd Test		5 Nights Package 2 Tests	
JUNIOR SUITE	45	1 person	6,300	1 person	6,000	1 person	19,000
		2 persons	9,000	2 persons	8,700	2 persons	25,000
		3 persons	12,500	3 persons	12,200	3 persons	34,000
ONE BEDROOM SUITE	60	1 person	6,500	1 person	6,200	1 person	23,500
		2 persons	9,200	2 persons	8,900	2 persons	28,500
		3 persons	12,700	3 persons	12,400	3 persons	38,500

Terms and Conditions:

- The above rates are net in Thai Baht (THB), including 7% government tax and 10% service charge.
- Full pre-payment is required at the time of making your reservation.
- Cancellation should be received 7 days prior to arrival to avoid full stay charge plus local taxes and service charge
- In case of no show or cancellation less than 7 days before arrival, a 100% charge of the package will be applied.

Package Inclusive:

- 1st Test package includes Airport pick up and 1 RT-PCR test
- 2nd Test package includes transportation from/to Hotel and Hospital and 1 RT-PCR test
- 5 Nights Package includes Airport pick up, transportation from/to Hotel and Hospital and 2 RT-PCR test
- Airport pick-up from Suvarnabhumi International Airport with SHA PLUS car
- Daily breakfast
- Complimentary early check-in from 08:00 hrs.
- Complimentary late check-out until 18:00 hrs.
- Commitment to your health and safety
- ONYX Rewards members earn full points

Contact us for a reservation | E: reservations.residencesbangkok@amari.com | T: +66 (0) 2308 5900 |

W: www.amari.com



WELCOME BACK TO BANGKOK CARLTON TEST & GO PACKAGE

Our Test & Go Package starts from **THB 6,900 net per person** inclusive of private arrival airport pick-up and a convenient drive-through RT-PCR test at Samitivej Hospital on the way to the hotel. Carlton Hotel Bangkok Sukhumvit is **SHA Extra Plus certified**.

Book now with validity for stays between **1 February – 31 March 2022**.

The package includes the following:

- 1 night stay in a Deluxe Room (room only)
- SHA+ private transfer from airport to hotel
- One time RT-PCR test at Samitivej Hospital
- Special room rates for extension nights
- 20% off in-room dining

For further information or reservations, please contact +66 2 090 7888
or e-mail: reservations@carltonhotel.co.th

f Carlton Hotel Bangkok Sukhumvit

ig carltonhotelbangkoksukhumvit

LINE @carltonhotelbkk

CARLTON ✱
HOTEL | BANGKOK SUKHUMVIT

สมิติเวช
SAMITIVEJ

Carlton Hotel Bangkok Sukhumvit

491 Sukhumvit Road, Klongtoey Nua, Wattana, Bangkok 10110
www.carltonhotel.co.th

BOOK NOW



Terms & Conditions: Price is in Thai Baht and is inclusive of tax and service charge • Rate is for one night stay and based on single occupancy and room only basis • Supplementary charge for a second person at THB 2,900 net per night inclusive of 1-time RT-PCR test • The RT-PCR test for day 5 is available at an additional charge of THB 2,900 net per person • The second person travelling and staying together must be your own family members or same family name • Minimum 7 days advance reservation is required and subject to availability • Full prepayment by credit card at the time of booking • The original credit card used for the booking must be presented at the time of arrival and the name on the card must be the same as indicated in the passport • Failure to present the credit card used for booking payment upon arrival will necessitate a new payment • The hotel reserves the right to amend the terms and conditions without prior notice.

WORLDHOTELS™
Elite

TEST AND GO PACKAGE

5 Days

CONRAD
BANGKOK

Fully vaccinated visitors from the approved countries and territories for quarantine-free entry require a 5-night reservation on at a SHA+ or AQ hotel.

Room Type	SQ.M.	Occupancy		Additional Person
		Single	Double	
Deluxe	41	25,000	33,800	Child 6-12 yr 7,800
Premium	41	25,300	34,100	
Deluxe Corner	53	25,600	34,400	
Grand Premium	53	26,300	35,100	
Executive Suite	71	27,000	35,800	Child 0-6 yr 5,800
Conrad Suite	114	29,000	37,800	
Connecting Deluxe x Deluxe Corner*	94	—	52,500	
Connecting Premium x Grand Premium*	94	—	53,500	

*Including 2 bedrooms and 2 bathrooms

Above rates are effective from 1 February 2022 and inclusive of 10% service charge and 7% government tax.

Full prepayment is required upon making a reservation. Rates are changeable and non-refundable.



DEDICATED SERVICES BY CONRAD BANGKOK

Hilton Honors elite night and point credits on eligible charges

- Stay in a spacious room with minimum size of 41m² (441 sq.ft.)
- Two openable floor to ceiling windows
- Arrival transfer between IATA-designated airports (BKK or DMK) and the hotel
- Two (2) meals (breakfast, lunch, or dinner) on day 1 & 5 and one (1) breakfast on day 2 - 4 with a variety of International cuisine available from an à la carte menu
- Special dietary requirements on request (Vegetarian, Vegan, Kosher, Halal, etc.)
- Snack and convenience menu available
- Complimentary high-speed internet access
- 42 international/ local news, music and entertainment TV channels, Google Chromecast, 7000+ electronic magazines & newspapers free of charge available on PressReader



BY SAMITVEJ SUKHUMVIT HOSPITAL

- One (1) COVID-19 PCR screening test via drive-through facility at Samitivej Sukhumvit Hospital on day 1
- One (1) COVID-19 PCR screening test available on-site from 16:00 - 18:00 hrs. Outside of these hours, guests will need to visit a drive-through facility at Samitivej Sukhumvit Hospital (transportation not included) on day 5.
- Provision of official COVID-19 undetected certificate
- Ambulance service on demand

For booking or more information, please contact: Phone: +66 (0) 2690 9999 or Email: bkkci.reservations@conradhotels.com
All Seasons Place, 87/3 Wireless Road, Bangkok, 10330 Thailand | ConradBangkok.com

CONRAD
BANGKOK



Hilton
CleanStay

สมิติเวช
SAMITVEJ

Hilton
HONORS



TEST AND GO PACKAGE

CONRAD
BANGKOK

Fully vaccinated visitors from the approved countries and territories for quarantine-free entry require a 1-night reservation on **day 1** at a SHA+ or AQ hotel.

Room Type	SQ.M.	Occupancy		Additional Person
		Single	Double	
Deluxe	41	7,500	11,700	
Premium	41	7,800	12,000	
Deluxe Corner	53	8,100	12,300	Child 6-12 yr 3,500
Grand Premium	53	8,800	13,000	
Executive Suite	71	9,500	13,700	Child 0-6 yr 2,500
Conrad Suite	114	11,500	15,700	
Connecting Deluxe x Deluxe Corner*	94	—	15,500	
Connecting Premium x Grand Premium*	94	—	16,500	

*Including 2 bedrooms and 2 bathrooms

Above rates are effective from 1 February 2022 and inclusive of 10% service charge and 7% government tax.

Full prepayment is required upon making a reservation. Rates are changeable and non-refundable.



DEDICATED SERVICES BY CONRAD BANGKOK

Hilton Honors elite night and point credits on eligible charges

- Stay in a spacious room with minimum size of 41m² (441 sq.ft.)
- Two openable floor to ceiling windows
- Arrival transfer between IATA-designated airports (BKK or DMK) and the hotel
- Two (2) meals (breakfast, lunch, or dinner) with a variety of International cuisine available from an à la carte menu
- Special dietary requirements on request (Vegetarian, Vegan, Kosher, Halal, etc.)
- Snack and convenience menu available
- Complimentary high-speed internet access
- 42 international/ local news, music and entertainment TV channels, Google Chromecast, 7000+ electronic magazines & newspapers free of charge available on PressReader



BY SAMITIVEJ SUKHUMVIT HOSPITAL

- One (1) COVID-19 PCR screening test via drive-through facility at Samitivej Sukhumvit Hospital
- Provision of official COVID-19 undetected certificate
- Ambulance service on demand

For booking or more information, please contact: Phone: +66 (0) 2690 9999 or Email: bkkci.reservations@conradhotels.com
All Seasons Place, 87/3 Wireless Road, Bangkok, 10330 Thailand | ConradBangkok.com

CONRAD
BANGKOK





TEST AND GO PACKAGE

Day 5

CONRAD
BANGKOK

Fully vaccinated visitors from the approved countries and territories for quarantine-free entry require a 1-night reservation on **day 5** at a SHA+ or AQ hotel.

Room Type	SQ.M.	Occupancy		Additional Person
		Single	Double	
Deluxe	41	5,900	9,400	
Premium	41	6,200	9,700	
Deluxe Corner	53	6,500	10,000	Child 6-12 yr 3,500
Grand Premium	53	7,200	10,700	
Executive Suite	71	7,900	11,400	Child 0-6 yr 2,500
Conrad Suite	114	9,900	13,400	
Connecting Deluxe x Deluxe Corner*	94	—	12,700	
Connecting Premium x Grand Premium*	94	—	16,500	

*Including 2 bedrooms and 2 bathrooms

Above rates are effective from 1 February 2022 and inclusive of 10% service charge and 7% government tax.

Full prepayment is required upon making a reservation. Rates are changeable and non-refundable.



DEDICATED SERVICES BY CONRAD BANGKOK

Hilton Honors elite night and point credits on eligible charges

- Stay in a spacious room with minimum size of 41m² (441 sq.ft.)
- Two openable floor to ceiling windows
- Two (2) meals (breakfast, lunch, or dinner) with a variety of International cuisine available from an à la carte menu
- Special dietary requirements on request (Vegetarian, Vegan, Kosher, Halal, etc.)
- Snack and convenience menu available
- Complimentary high-speed internet access
- 42 international/ local news, music and entertainment TV channels, Google Chromecast, 7000+ electronic magazines & newspapers free of charge available on PressReader



BY SAMITIVEJ SUKHUMVIT HOSPITAL

- One (1) COVID-19 PCR screening test available on-site from 16:00 to 18:00 hrs. Outside of these hours, guests will need to visit a drive-through facility at Samitivej Sukhumvit Hospital between 08:00 – 18:00 hrs. (transportation not included).
- Provision of official COVID-19 undetected certificate
- Ambulance service on demand

For booking or more information, please contact: Phone: +66 (0) 2690 9999 or Email: bkkci.reservations@conradhotels.com
All Seasons Place, 87/3 Wireless Road, Bangkok, 10330 Thailand | ConradBangkok.com

CONRAD
BANGKOK



Hilton
CleanStay

สมิติเวช
SAMITIVEJ

Hilton
HONORS

Hilton
CleanStay



Plus+

Test & Go Packages with DoubleTree by Hilton

*SUPERIOR ROOM

Book your room under Corporate rate Plus Add on Test & Go package

Add on package for

Day 1 THB 4,625

- Limousine transfer from the Airport to the Hotel
- 1 COVID-19 screening test conducted on property by Samitivej International Hospital
- 20% discount on any additional food and beverage

Add on package for

Day 5 THB 2,825

- 1 COVID-19 screening test conducted on property by Samitivej International Hospital
- 20% discount on any additional food and beverage

***Additional THB 350 only for Drive Through**

Terms & Conditions

- Advance booking required
- Flight itinerary (E-ticket) and copy of passport for all would be required after making reservation
- Length of stay is subject to change based on the RT-PCR Test result
- For all Flight arrival during during 12 AM - 7 AM, 2 nights package will be applied
- Rates are subject to change based on prevailing market conditions, government guidelines and hospital guidelines
- Rooms are subject to availability upon confirmation



T&Cs apply

For reservations, please call +66 (0) 2649 6666
or email bkkss_corpsales@hilton.com

DOUBLETREE BY HILTON SUKHUMVIT BANGKOK

18/1 Sukhumvit 26 Alley, Khlong Tan, Khlong Toei, Bangkok 10110, Thailand



Note: All information provided is subject to Government approvals

Greeting from Hotel Clover Asoke!

Test & Go Program (Phrase 2)				
Room Category	One Night		Combo Set	Five Nights
	One Meal / One Way transfer PCR 1 Time	One Meal / PCR 1 Time	Daily One Meal / One Way Transfer PCR 2 Times	Daily one meal / One Way Transfer PCR 2 Times
	T&G Day 1	T&G Day 5	T&G Day 1 + Day 5	T&G Day 1 - 5
Classic Room (25 Sqm)	4,900	4,000	8,888	14,900
Executive Corner (32 Sqm)	5,900	4,900	10,888	16,900
Extra Person	3,100	3,100	6,200	9,200
Child Age Not Above 1 Year Old (meal not Include)	2,700	2,700	5,400	6,900

Hotel & Hospital Services and Privileges	
<ul style="list-style-type: none"> • Daily one meal delivery service (Thai, Asian, Western, Vegetarian) • SHA+ Airport Pick up and Airport Rep. Service 24 hours. • Bon café coffee machine with welcome complimentary coffee capsules • High speed internet Wi-Fi • Standard amenities for the entire stay • Unlimited date change if flight cancel or delayed <p>Allowed: Food Delivery service (Grab food, Foodpanda, Lineman etc.)</p>	<ul style="list-style-type: none"> • Bangkok top 5 medical service by Smitivej Hospital, lead Health Care Provider • RT-PCR Test 1 - 2 time as follow packages.

Hilton
CleanStay



Test & Go Packages

with Hilton Sukhumvit Bangkok

Book your room under Corporate rate Plus Add on Test & Go package

Add on package for

Day 1 THB 4,625

- Limousine transfer from the Airport to the Hotel
- 1 COVID-19 screening test conducted on property by Samitivej International Hospital
- 20% discount on any additional food and beverage

Add on package for

Day 5 THB 2,825

- 1 COVID-19 screening test conducted on property by Samitivej International Hospital
- 20% discount on any additional food and beverage

***Additional THB 350 only for Drive Through**

Terms & Conditions

- Advance booking required
- Flight itinerary (E-ticket) and copy of passport for all would be required after making reservation
- Length of stay is subject to change based on the RT-PCR Test result
- For all Flight arrival during during 12 AM - 7 AM, 2 nights package will be applied
- Rates are subject to change based on prevailing market conditions, government guidelines and hospital guidelines
- Rooms are subject to availability upon confirmation



T&Cs apply

For reservations, please call +66 (0) 2620 6666
or email bkkss_corpsales@hilton.com

HILTON SUKHUMVIT BANGKOK

11 Sukhumvit 24 Alley, Khlong Tan, Khlong Toei, Bangkok 10110, Thailand



Note: All information provided is subject to Government approvals

InterContinental Bangkok – Test & Go Package 2022

Stay period valid from 1 February – 31 March 2022 only

Day 1 Package (1 night with breakfast + 1 time drive-thru RT-PCR + 1 way airport transfer)

Grande Deluxe Room (45 Sqm)

: THB 7,600 net per room per night – single occupancy include breakfast

: THB 10,100 net per room per night – double occupancy include breakfast

Corner Suite (67 Sqm)

: THB 9,600 net per room per night – single occupancy include breakfast

: THB 12,100 net per room per night – double occupancy include breakfast

Club InterContinental Room (45 Sqm)

: THB 9,600 net per room per night – single occupancy include breakfast, afternoon tea, and evening cocktails (Serve in-room only)

: THB 12,100 net per room per night – double occupancy include breakfast, afternoon tea, and evening cocktails (Serve in-room only)

Extra Bed for extra person: THB 3,700 net per bed per night (maximum one bed per room). Include drive-thru 1 time RT-PCR test upon arrival.

Day 5: Book thru your preferred rate and add-on drive-thru RT-PCR test for Day 5th at THB 2,500 Net per person.

: Additional service for transfer by Toyota Camry from Hotel to Hospital and back to Hotel on request at THB 1,200 net per car (Maximum capacity up to 2 persons per car)

: Additional service for transfer by Toyota Commuter Van from Hotel to Hospital and back to Hotel on request at THB 1,600 net per car (Maximum capacity up to 5 persons per car)

**** 2nd RT-PCR test on Day 5th is available at 08.00 – 18.00 hours only, advance reservation is requested****

5 Nights Package (5 consecutive nights with breakfast + 2 times drive-thru RT-PCR + 1 way airport transfer)

Grande Deluxe room (45 Sqm)

: THB 21,500 net per room per night – single occupancy include breakfast

: THB 27,000 net per room per night – double occupancy include breakfast

Corner Suite (67 Sqm)

: THB 31,000 net per room per night – single occupancy include breakfast

: THB 36,100 net per room per night – double occupancy include breakfast

Club InterContinental Room (45 Sqm)

: **THB 31,000 net** per room per night – single occupancy include breakfast, afternoon tea, and evening cocktails (Serve in-room only)

: **THB 36,100 net** per room per night – double occupancy include breakfast, afternoon tea, and evening cocktails (Serve in-room only)

Child policy:

- Child under 12 years able to sharing the bed with parent (Breakfast charge for half price THB 283 net per day) and additional charge THB 2,500 net for 1 time drive-thru RT-PCR test upon arrival
- Child 12 years and over must have fully vaccinate with additional charge for extra person, 1 time drive-thru RT-PCR test upon arrival (Included in Extra person charge above)
- All above listed prices are inclusive 10% service charge and 7% applicable value added tax.

(Limousine waits at the hospital maximum 1 hour after that the charge is **THB 350 net** per hour for Toyota Camry & Toyota Commuter)

Term and Conditions

- This package is for fully vaccinate at least 14 days prior to traveling
- Children under 12 years and travelling with parents are exempt for full vaccination
- For submit Thailand Pass, please visit <https://tp.consular.go.th/>
- Booking required 07 days in advance for government approval

Rate Rules and Cancellation Policy:

- Full pre-payment required at the time of booking
- This package is eligible to IHG Rewards program (IHG Rewards point is calculate from room revenue only)
- Any amendment or additional service request, please contact hotel 24 hours prior on arrival date
- No cancellation are allowed
- This package cannot combine with other promotion
- Check-in time is 15.00 hrs Check-out time is 12.00 hrs
- For additional information of the hotel, please visit our website: www.intercontinental.com

*We hopefully that this offering will be reach to your Attraction or Satisfaction or Expectation with **kindly return together with full filled credit card authorization form, passport copy and credit card front & back with flight details** to secure the space, so we can revert you with hotel confirmation letter properly.*





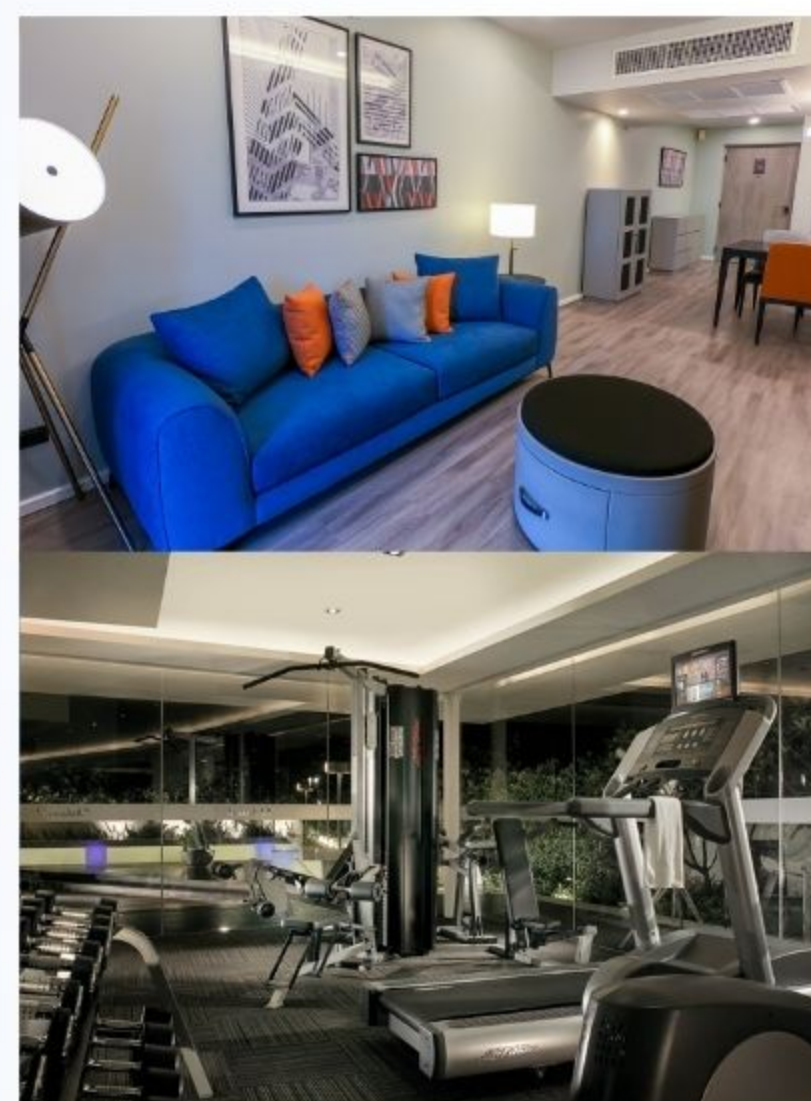
TEST & GO LONG STAY

5 NIGHTS PACKAGE



Test & Go Package offers by Oakwood Residence Sukhumvit Thonglor, Bangkok

Type of Residence	Size (Sq.m.)	Maximum person	5 Days (Test & Go Package)	Extend Stay (per room/per night)
Studio	46-53	2	1 Person: THB 20,900 2 Person: THB 25,300	THB 2,800
One Bedroom	76-88	2	1 Person: THB 25,900 2 Person: THB 30,300	THB 3,800
Two Bedroom	117-134	4	1 Person: THB 37,800 2 Person: THB 42,500 3 Person: THB 47,200 4 Person: THB 51,400	THB 6,200
Three Bedroom	160-183	6	1 Person: THB 52,800 2 Person: THB 58,000 3 Person: THB 62,200 4 Person: THB 66,400 5 Person: THB 70,600 6 Person: THB 75,600	THB 9,200



Terms & Conditions

- Book & Stay from 01 February - 30 June 2022.
- Rate is inclusive of breakfast based on guest number.
- One-way transportation from Suvarnabhumi Airport to hotel. (Don Muang International Airport* extra charge THB 500 per person.)
- Shuttle service from Hotel to Samitivej Hospital for COVID-19 RT PCR screening test at Samitivej Hospital.
- Two times COVID-19 RT-PCR screening test on Day 1 & Day 5 (result within 24 hrs.) by Samitivej Hospital.
- Above rates are quoted NET, inclusive of Service Charge, VAT and applicable government taxes.
- This package is subject to government established regulation for the health observation of all arrival to Thailand.
- Advance reservation is required at least 7 days prior arrival.
- Full Pre- payment is required at the time of booking and non-refundable.
- Flight itinerary is required at least 3 days in advance for the transportation service on arrival.

For more information, please contact

Tel: +66 (0) 2 713 9500

Email: gs.Residence-SukhumvitThonglor-Bangkok@oakwood.com

Oakwood Residence Sukhumvit Thonglor, Bangkok

113 Soi Akkaphat (Thonglor 13) Sukhumvit 55 Road,
Klongton Nua, Wattana, Bangkok 10110.



SUKHUMVIT THONGLOR, BANGKOK



Plus+



TEST & GO DAY 1

PACKAGE



Test & Go Package offers by Oakwood Residence Sukhumvit Thonglor, Bangkok

Type of Residence	Size (Sq.m.)	Maximum person	1st Night (Test & Go Package)	Extend Stay (per room/per night)
Studio	46-53	2	1 Person: THB 6,700 2 Person: THB 8,900	THB 2,800
One Bedroom	76-88	2	1 Person: THB 7,700 2 Person: THB 9,900	THB 3,800
Two Bedroom	117-134	4	1 Person: THB 10,000 2 Person: THB 12,500 3 Person: THB 15,000 4 Person: THB 17,000	THB 6,200
Three Bedroom	160-183	6	1 Person: THB 13,000 2 Person: THB 16,000 3 Person: THB 18,000 4 Person: THB 20,000 5 Person: THB 22,000 6 Person: THB 26,000	THB 9,200



Terms & Conditions

- Book & Stay from 01 February - 30 June 2022.
- Rate is inclusive of breakfast for based on guest number.
- One-way transportation from Suvarnabhumi Airport to hotel.
Don Muang International Airport* extra charge THB 500 per person.
- One time COVID-19 RT-PCR screening test (result within 24 hrs.) by Samitivej Hospital.
- Above rates are quoted NET, inclusive of Service Charge, VAT and applicable government taxes.
- This package is subject to government established regulation for the health observation of all arrival to Thailand.
- Advance reservation is required at least 7 days prior arrival.
- Full Pre- payment is required at the the time of booking and non-refundable.
- Flight itinerary is required at least 3 days in advance for the transportation service on arrival.

For more information, please contact

Tel: +66 (0) 2 713 9500

Email: gs.Residence-SukhumvitThonglor-Bangkok@oakwood.com

Oakwood Residence Sukhumvit Thonglor, Bangkok

113 Soi Akkaphat (Thonglor 13) Sukhumvit 55 Road,

Klongton Nua, Wattana, Bangkok 10110.



SUKHUMVIT THONGLOR, BANGKOK



Plus+



TEST & GO DAY 5

PACKAGE

Test & Go Package offers by Oakwood Residence Sukhumvit Thonglor, Bangkok

Type of Residence	Size (Sqm.)	Maximum person	Day 5 (Test & Go Package)	Extend Stay (per room/per night)
Studio	46-53	2	1 Person: THB 6,000 2 Person: THB 8,200	THB 2,800
One Bedroomn	76-88	2	1 Person: THB 7,000 2 Person: THB 9,200	THB 3,800
Two Bedroom	117-134	4	1 Person: THB 9,300 2 Person: THB 11,800 3 Person: THB 14,300 4 Person: THB 16,300	THB 6,200
Three Bedroom	160-183	6	1 Person: THB 12,300 2 Person: THB 15,300 3 Person: THB 17,300 4 Person: THB 19,300 5 Person: THB 21,300 6 Person: THB 24,600	THB 9,200



Terms & Conditions

- Book & Stay from 01 February - 30 June 2022.
- Rate is inclusive of breakfast based on guest number.
- Shuttle service from Hotel to Samitivej Hospital for COVID-19 RT PCR screening test at Samitivej Hospital.
- One time COVID-19 RT-PCR screening test (result within 24 hrs.) by Samitivej Hospital.
- Above rates are quoted NET, inclusive of Service Charge, VAT and applicable government taxes.
- This package is subject to government established regulation for the health observation of all arrival to Thailand.
- Advance reservation is required at least 7 days prior arrival.
- Full Pre- payment is required at the the time of booking and non-refundable.

For more information, please contact

Tel: +66 (0) 2 713 9500

Email: gs.Residence-SukhumvitThonglor-Bangkok@oakwood.com

Oakwood Residence Sukhumvit Thonglor, Bangkok

113 Soi Akkaphat (Thonglor 13) Sukhumvit 55 Road,
Klongton Nua, Wattana, Bangkok 10110.



SUKHUMVIT THONGLOR, BANGKOK

Reviving Haven

1 February - 31 March 2022



Package Include	1st Night Baht 9,100 net / night starting from	5th Night Baht 6,400 net / night starting from	5-Consecutive Nights Baht 5,620 net / night starting from
1st day COVID-19 RT-PCR swab test with COVID-19 free Certify	✓		✓
One-trip of airport transportation from Sunvarnabhumi International Airport or Don Mueang International Airport to hotel	✓		✓
5th day COVID-19 RT-PCR swab test with COVID-19 free Certify		✓	✓



The Okura Prestige
BANGKOK

Park Ventures Ecoplex, 57 Wireless Road, Bangkok 10330, Thailand

T. 02 687 9000 F. 02 687 9001 E. info@okurabangkok.com okurabangkok.com facebook.com/theokuraprestigebangkok



THE LEADING HOTELS
OF THE WORLD



Nestled in the beating heart of Bangkok, **SHA PLUS+** certified 5-star hotel, Sheraton Grande Sukhumvit, a Luxury Collection Hotel lets travelers uncover the soul of this inspiring city. Direct skybridge access to skytrain and subway stations puts the entire city within easy reach.

The hotel has partnered with Samitivej Sukhumvit hospital, one of the best hospitals in Bangkok for health and wellness and The Mall Group to offer all-in-one welcome to Bangkok stay package. We look forward to welcoming you to a unique luxury stay experience in the heart of Bangkok’s vibrant business and entertainment district.

ROOM TYPE	1-NIGHT (THB)		2-NIGHT (THB)	
	SINGLE	DOUBLE	SINGLE	DOUBLE
GRANDE ROOM 45 SQM	7,200 NET	10,200 NET	10,500 NET	13,500 NET
GRANDE SUITE (70 SQM)	11,000 NET	14,000 NET	18,000 NET	21,300 NET

Standard check-in time is from 15:00 hrs. and check-out time is until 12:00 hrs. 2-night stay is required in case of early check-in or/and late check-out. All packages are subject to availability, terms and conditions apply.

Services by Sheraton Grande Sukhumvit, a Luxury Collection Hotel

- Pick up transfer service from Suvarnabhumi or Don Mueang Airport to RT-PCR Test drive through service at Samitivej Sukhumvit Hospital then to the hotel
- Complimentary daily breakfast
- Complimentary high speed internet access
- International / local news, music and entertainment TV channels
- Complimentary THB 200 valued cash coupon and Platinum Tourist Card at Emporium, EmQuartier, Paragon department store (available while stocks last)

Services by Samitivej Sukhumvit Hospital

- One time COVID-19 RT-PCR test drive through service

Terms and conditions

- Extra person charge at THB 4,000 net for 1-night package and THB 5,300 net for 2-night package
- Maximum of 3 persons per room
- Package rate and room type are non-smoking
- This package is subject to all government regulations as required for international arrivals into Thailand
- Sharing room condition will be based on government regulations, all guests are required to sign Sharing Room Consent Form and send back before arrival
- Guest is required to provide valid vaccination certificate at time of reservation
- All guests are required to maintain inside the room until receive first (1st) Negative RT-PCR test result
- A credit card is required for full pre-payment at time of reservation
- Hotel do not accept third (3rd) party credit card. Please present your own original card which used for pre-payment upon check-in for verification
- Hotel will charge the deposit within 24 hours of making the reservation. If payment is unsuccessful, hotel reserves the right to cancel the reservation
- Reservation modification must be done before 18:00 hrs. local hotel time 3 days prior to the scheduled arrival date to avoid penalty charge at 50% of package rate
- Packages are refundable in case Thailand Pass is rejected. Cancellation must be done before 18:00 hrs. local hotel time 3 days prior to the scheduled arrival date to avoid penalty charge at 50% of package rate will be applied
- Failure to check-in at hotel as scheduled without notification after 18:00 hrs. local hotel time 3 days prior to the scheduled arrival date, penalty charge at 100% of package rate will be applied
- This package is not inclusive of ambulance fee, hospital stays and services. Additional charges will be applied if COVID test result is positive during stay
- If guest has positive COVID-19 test result, the pre-payment of hotel package will be nonrefundable, non-transferable and cannot be applied toward future stays

In order to process booking, kindly provide following information

- Period of stay
- All guest name with photocopy / scan of passport & Thai ID card for THAI nationality (please DO NOT sign or mark on the copy)
- Telephone number
- Credit card number with expiration date for pre-payment process. Hotel do not accept third (3rd) party credit card
- Flight itinerary or E-Ticket (Initial departing flight and final arrival flight)
- Vaccination certificate in English version
- Marriott Bonvoy number (If any)

Add-on RT-PCR Test with transfer service from and to hotel also available for 5th night stay as follows

NO. OF PERSON	CAMRY (THB)	TOYOTA COMMUTER (THB)	MERCEDES-BENZ E-CLASS (THB)
1 PERSON	3,200 NET	-	4,000 NET
2 PERSONS	5,400 NET	6,200 NET	6,200 NET
3 PERSONS	-	8,400 NET	-
4 PERSONS	-	10,600 NET	-

SHA+ Test & Go Package

Room Type	Room rate Single Occupancy	Room rate Double Occupancy
Deluxe room (28.5 sqm)	THB 6,000 net	THB 8,700 net

Rates Inclusion:

- Room rates are inclusive of daily breakfast
- Child under 12 years and travelling with parents are exempt for full vaccination
- Child under 12 years can share the existing bed with parents include breakfast. Additional charge THB 2,354 net for drive-thru 1 time PT-PCR test upon arrival is applied.
- Package includes transport pickup from Airport to Hospital for drive-thru 1 time RT-PCR test upon arrival and back to Hotel by Toyota Camry (maximum 2 passengers with 2 to 3 pieces of suitcases) and 1 ATK test kit*
- Limousine representative will wait at the hospital maximum 1 hour after that the charge is THB 350 net per hour will be applied to guest account
- Supplement charge to stay on the night of 24th, 25th, 30th, 31st December 2021 and 1st January 2022 at THB 1,000 net/room.
- All above listed prices are inclusive 10% service charge and 7% applicable value added tax.

Term and Conditions:

- This package is for fully vaccinate at least 14 days prior to traveling
- Travel from 63 countries list [Click here](#) announced by government only.
- To register Thailand Pass, please visit [THAILAND PASS](#)
- Booking required 07 days in advance for government approval

Rate Rules and Cancellation Policy:

- Full pre-payment required before your arrival date
- No cancellation is allowed
- Any amendment, please contact hotel 24 hours prior on arrival date
- This package cannot be combined with other promotions
- Check-in time is 15.00 hrs Check-out time is 12.00 hrs
- For additional information of the hotel, please visit our website www.holidayinn.com/hibangkok

We hope that this offering will be reaching to your Attraction or Satisfaction or Expectation. Kindly return your confirmation with travelling date together with **full filled credit card authorization form, passport copy and credit card front & back with flight details** to secure the accommodation space, so we can revert you with hotel confirmation letter properly.



WELCOME BACK

"NIKKO TEST & Go"



STARTING FROM
THB **6,500** NET per person

- ✔ One-night Accommodation
- ✔ RT-PCR Swab Test
- ✔ 1 Antigen Test Kit (ATK)

- ✔ SHA+ One-way Airport Transfer
- ✔ Full Board Meal Plan
- ✔ Complimentary Late Check-out 18:00 hrs.



Reservation : 02-080-2111
Email : rsvn@nikkobangkok.com



TEST & GO 1 DAY PACKAGE START FROM 6,900 THB

CLASSIC ROOMS
50 SQM.

6,900

THB / PACKAGE / PERSON

DELUXE ROOM
53 SQM.

7,200

THB / PACKAGE / PERSON

CORNER ROOMS
63 SQM.

8,200

THB / PACKAGE / PERSON

SUITES
79 SQM.

10,300

THB / PACKAGE / PERSON

EXTRA PERSON CHARGE THB 3,000 / PERSON / PACKAGE

FACILITIES & MEDICAL SERVICE

- ✓ COMPLIMENTARY AIRPORT PICK UP SERVICE ON ARRIVAL DAY (SUARNABHUMI AIRPORT OR DON MUANG AIRPORT)
- ✓ COVID-19 TESTS WILL BE ON DAY 0-1 (YOU WILL BE TRANSFERRED TO SAMITIVEJ HOSPITAL IF THE RESULT IS POSITIVE)
- ✓ COMPLIMENTARY DAILY BREAKFAST
- ✓ ADDITIONAL CHARGES LUNCH 450 THB AND DINNER 550 THB PER PERSON
- ✓ 20% DISCOUNT FOR ADDITIONAL 24 HOUR FOOD SERVICE & 50% DISCOUNT ON LAUNDRY SERVICE
- ✓ FREE WIFI WITH HIGH SPEED INTERNET
- ✓ IN-ROOM JACUZZI IN EVERY ROOM WITH SEPARATE SHOWER



FOR MORE DETAILS, PLEASE CALL +66 2 615 6400

OR RESERVATION@MADUZIHOTEL.COM AND WWW.MADUZIHOTEL.COM

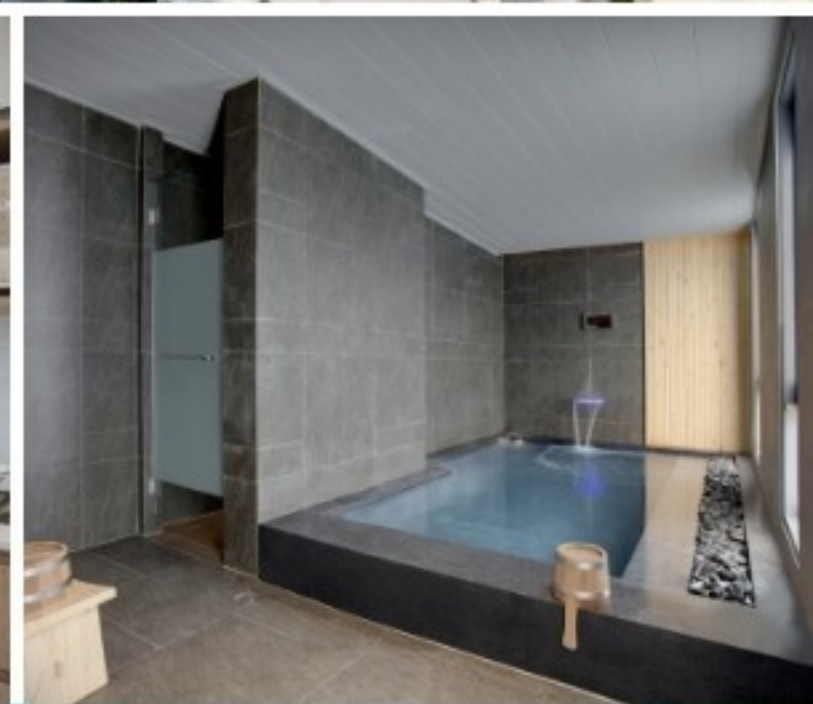
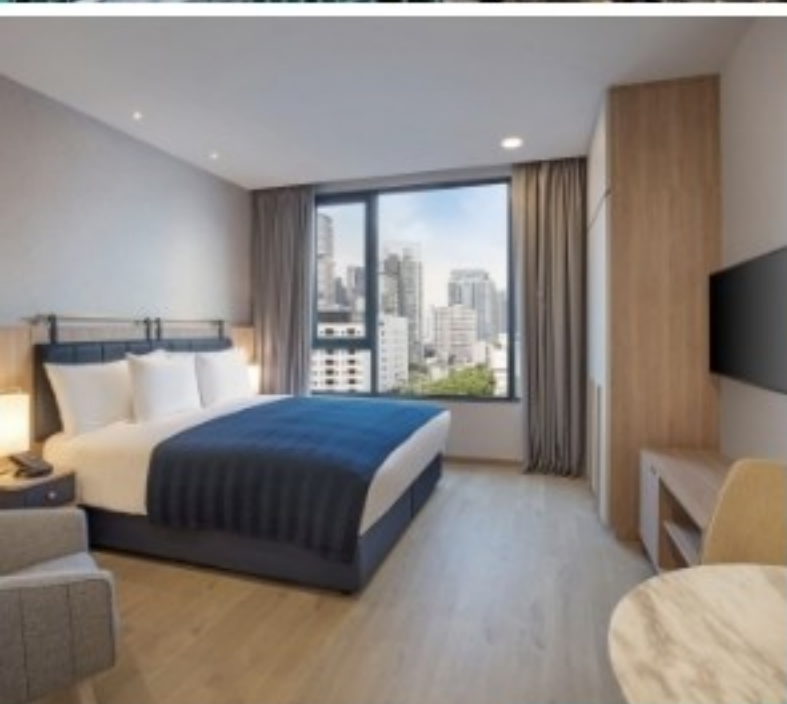
TEST & GO

1 NIGHT PACKAGE START FROM

THB 6,100 NET

RT-PCR + 1 ATK KIT

FROM 01 NOV 2021- 31 MAR 2022



Rate Validity from 01 Nov - 31 Dec 2021

- 1 person = THB 6,100 net per night
- 2 persons = THB 9,000 net per night

Rate Validity from 01 Jan - Mar 2022

- 1 person = THB 6,400 net per night
- 2 persons = THB 9,300 net per night
- Supplement charge THB 1,000 for 24 Dec'21 - 02 Jan'22
- Hotel require 1st night full payment upon confirmation
- Date changes allowed free of charge until 1 day prior arrival

Benefits and Inclusions

- 1 night stay at Studio Suite (28sqm.)
- Daily buffet breakfasts
- Daily cleaning service, 2 bottles of water, complimentary WIFI, Fitness Centre, Swimming Pool and Onsen
- Limousine airport transfer
- RT-PCR with a certificate of examination Certify by Samitivej Hospital
- 1 Antigen Test Kit
- Rates are inclusive of service charge and government tax.



ROOM TYPE

Single package

- Superior Room (28 sq.m)
5,200 THB per person
- Deluxe Room with Balcony (38 sq.m)
5,900 THB per person
- Junior Suite with Balcony (48 sq.m)
6,500 THB per person

Couple Package

- Superior Room (28 sq.m)
8,000 THB per 2 persons
- Deluxe Room with Balcony (38 sq.m)
8,900 THB per 2 persons
- Junior Suite with Balcony (48 sq.m)
9,500 THB per 2 persons

Family Package

- Deluxe Room with Balcony (38 sq.m)
2 Adult + 1 Child *11,400 THB*
- Junior Suite with Balcony (48 sq.m)
2 Adult + 1 Child *12,000 THB*
- Junior Suite with Balcony (48 sq.m)
2 Adult + 2 Child *14,500 THB*

All-inclusive of :

- Free airport pick up to the hotel
- 1x Covid Test as per revised Government rules
- Special designed set menu 3 meals
- Premium Wifi
- Free Netflix account during your stay
- 24-hour Personal Idle service assistant
- 2 days Guest room and bathroom amenities
- 24 Hour standby nursing service (by Samitivej Hospital)

BOOK

Now – 31 December 2021

REMARK :

- Hotel reserves the right to keep outstanding balances in any case of an early official government request to leave program or by Covid-19 infections during the program participation, without any exceptions. In case of having fever or cough during the stay while not having contracted Covid-19, participants have the right to stay until end of the program.
- In cases where purchases are made to third party vendors through the Idle Service Assistant, 10% service charge will apply.
- Additional requests for Tytocare exams an additional charge of 1,500 Baht/time will apply
- Limited offer only



For more information, please call 092 624 6452
or email at asqsales@theidle-residence.com