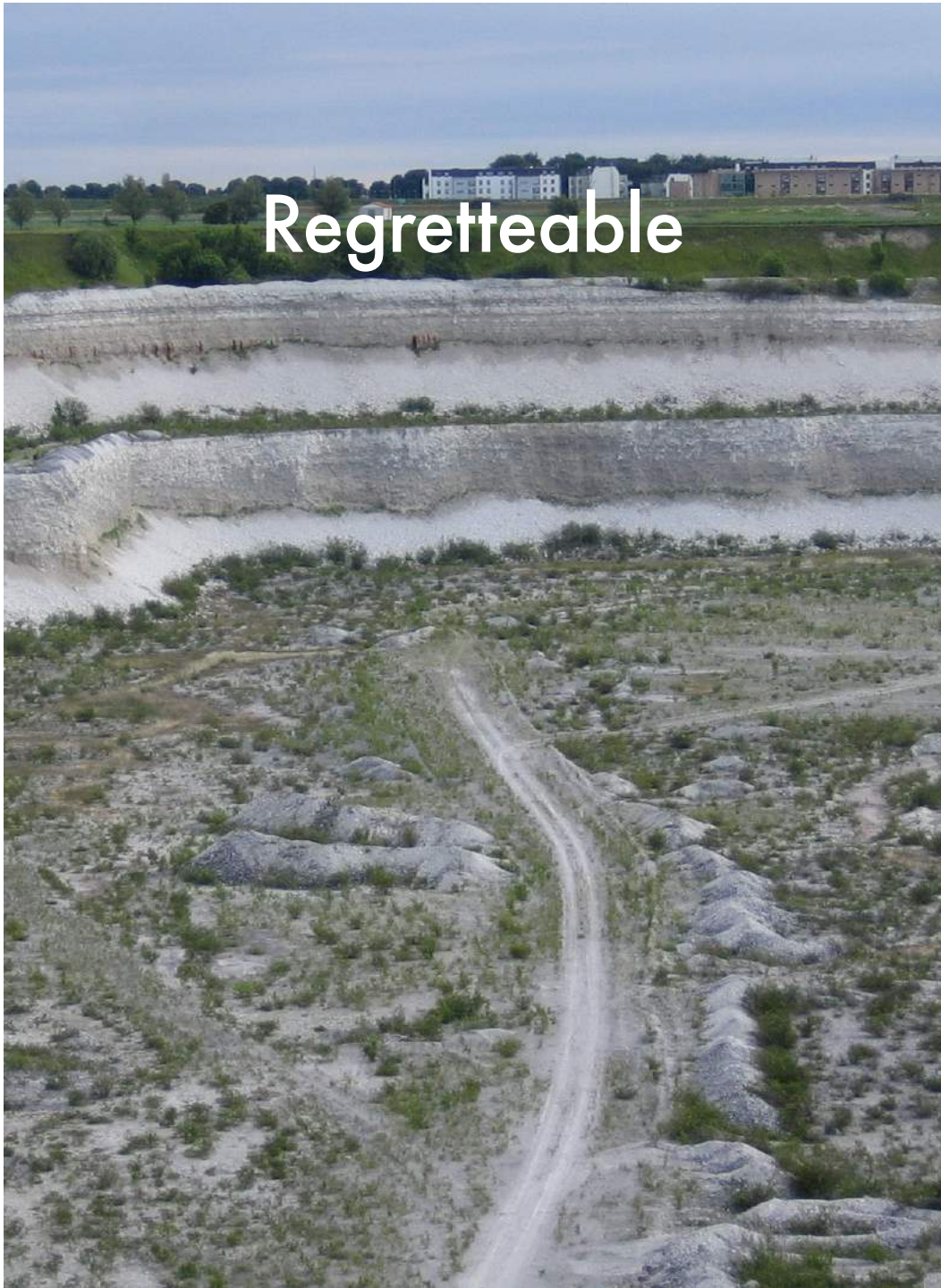


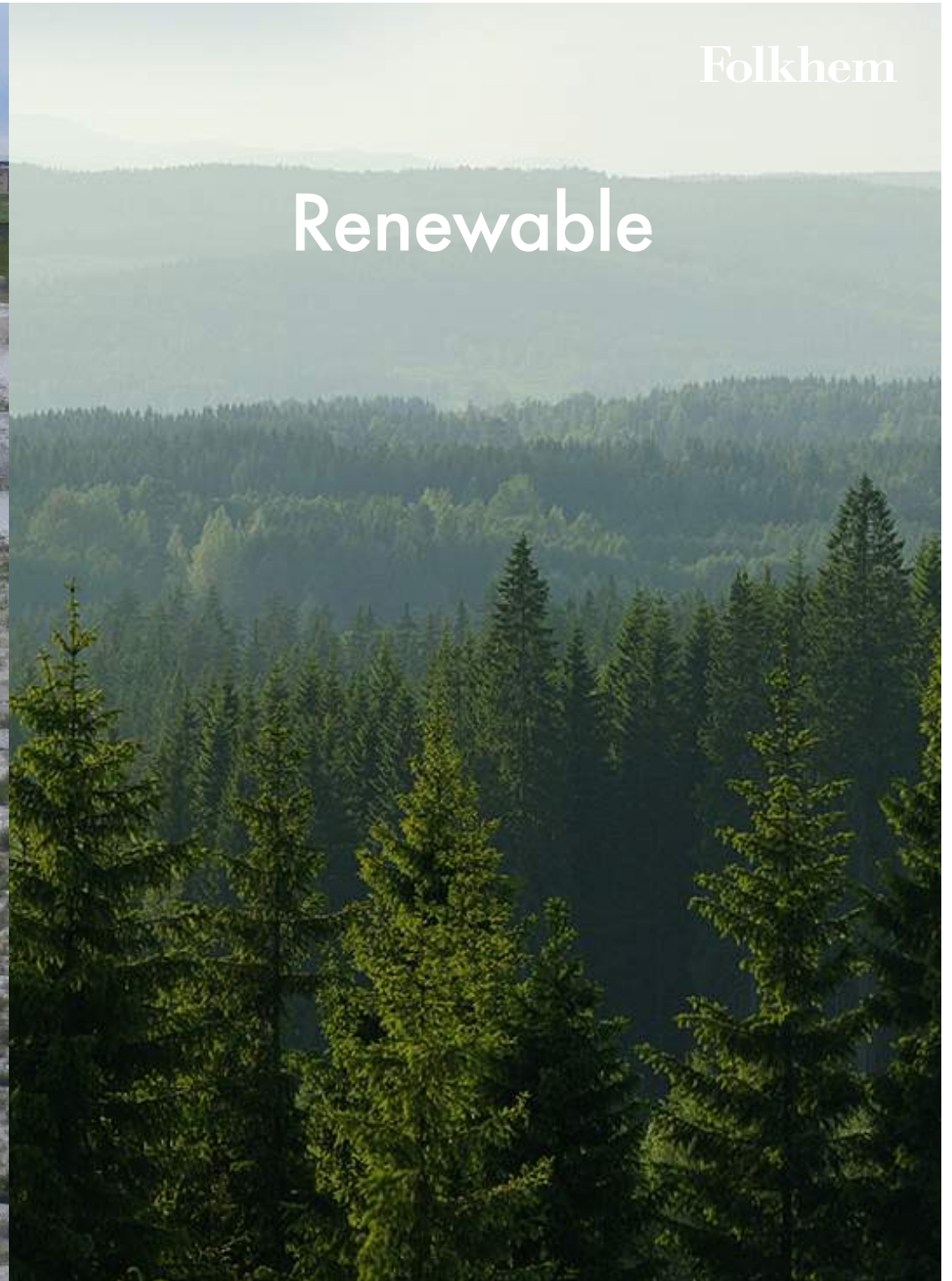
A photograph of a large, gnarled tree with a thick trunk and many branches, set against a background of a dense forest. The tree's trunk is dark and textured, with some lighter patches. The branches are thick and curve outwards, some reaching towards the top of the frame. The foliage is dense and green, with some sunlight filtering through. In the top right corner, the word "Folkhem" is written in a white, serif font.

Folkhem

Welcome to the world of Folkhem



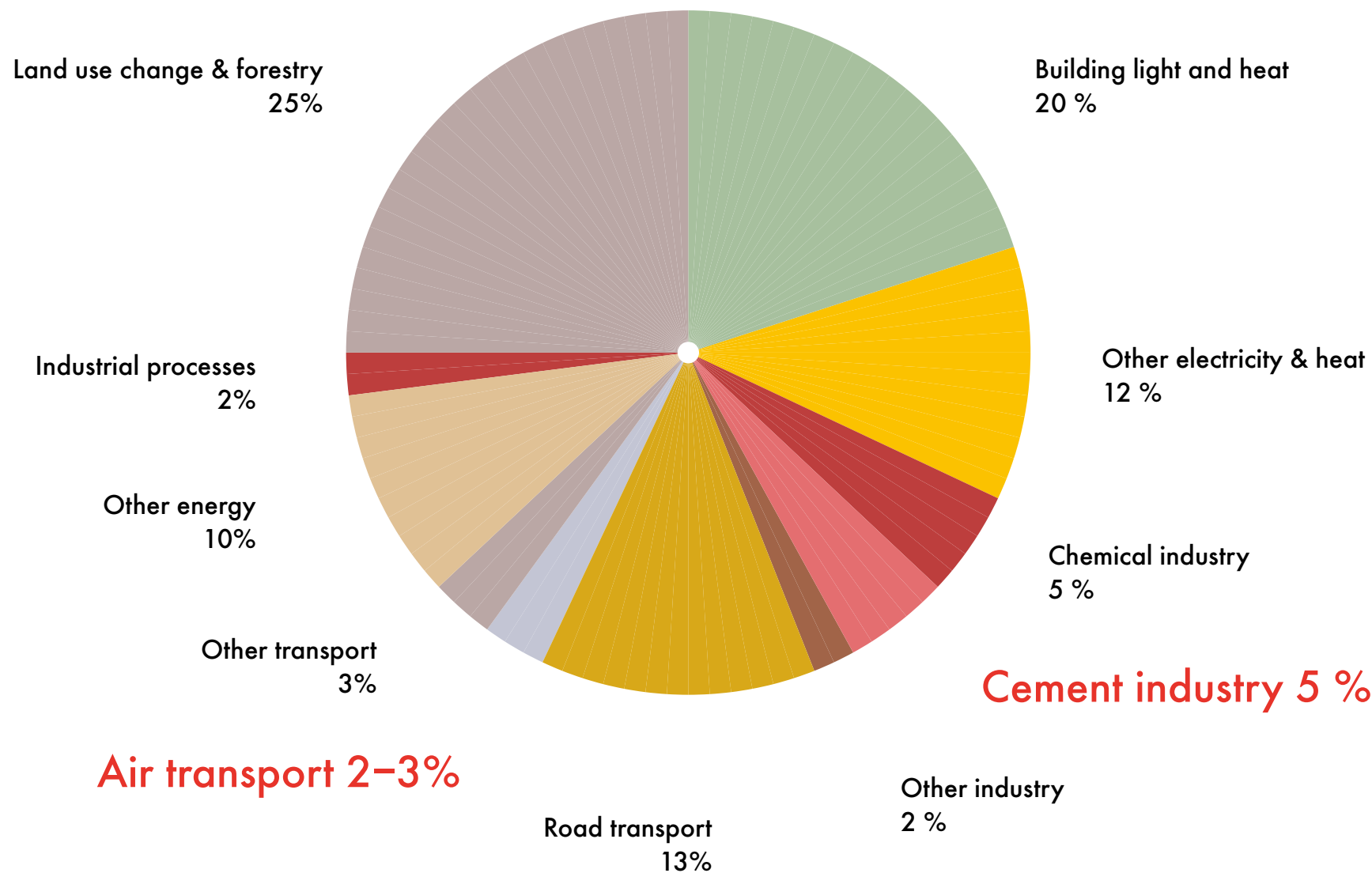
Regretteable



Folkhem

Renewable

Global CO₂ emissions*



Worldwide,
the building
industry is responsible
for about **50%**
of CO₂ emissions



A political determination:
In 2020 50% of all new buildings
will be built in wood.

VÄXJÖ

A photograph of a construction site at dusk or dawn. A large red concrete pump truck with a long, articulated boom is the central focus. In the background, a tall building under construction is visible, along with other structures and construction equipment. The sky is overcast.

Building and
transport,
emissions
under construction

80% CO₂

A photograph of the entrance to a brick building. The entrance features a dark wooden double door with decorative glass panels. The building is made of red brick and has green-framed windows on either side. A small, bare tree is in the foreground. The sky is blue.

Heating and
living,
emissions
under a lifetime

20% CO₂

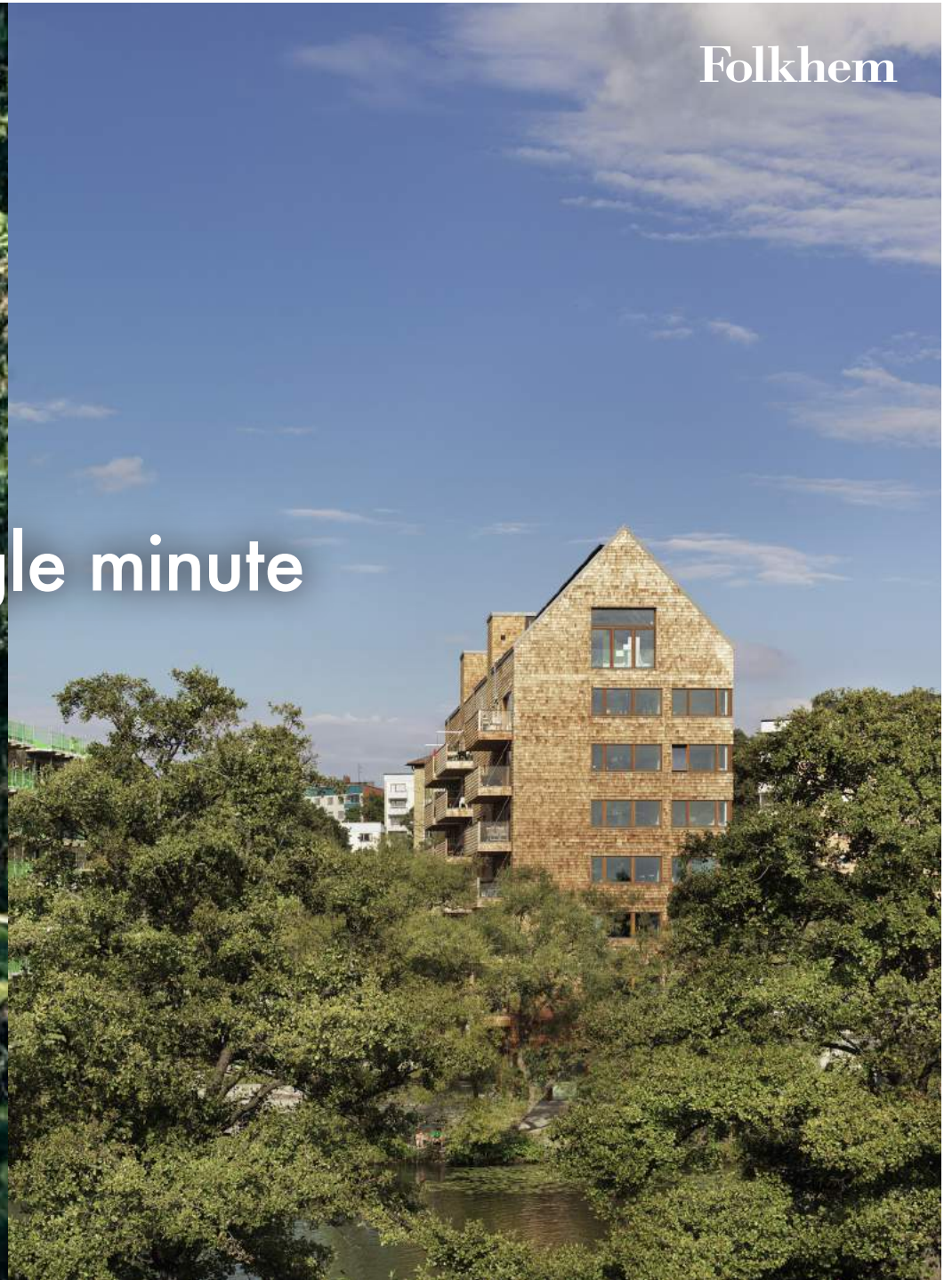
Folkhem

Strandparken 8 stories



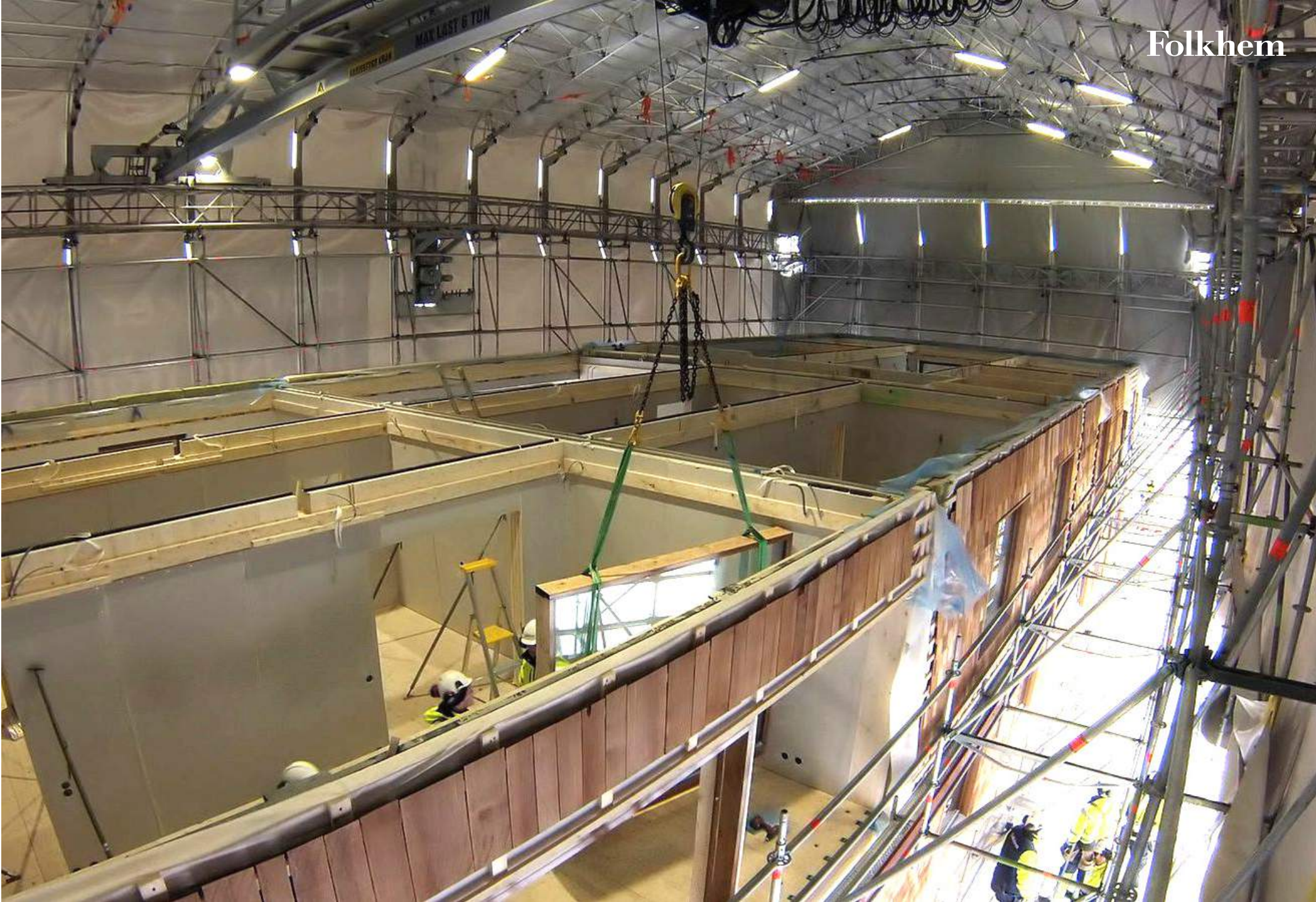


One single minute

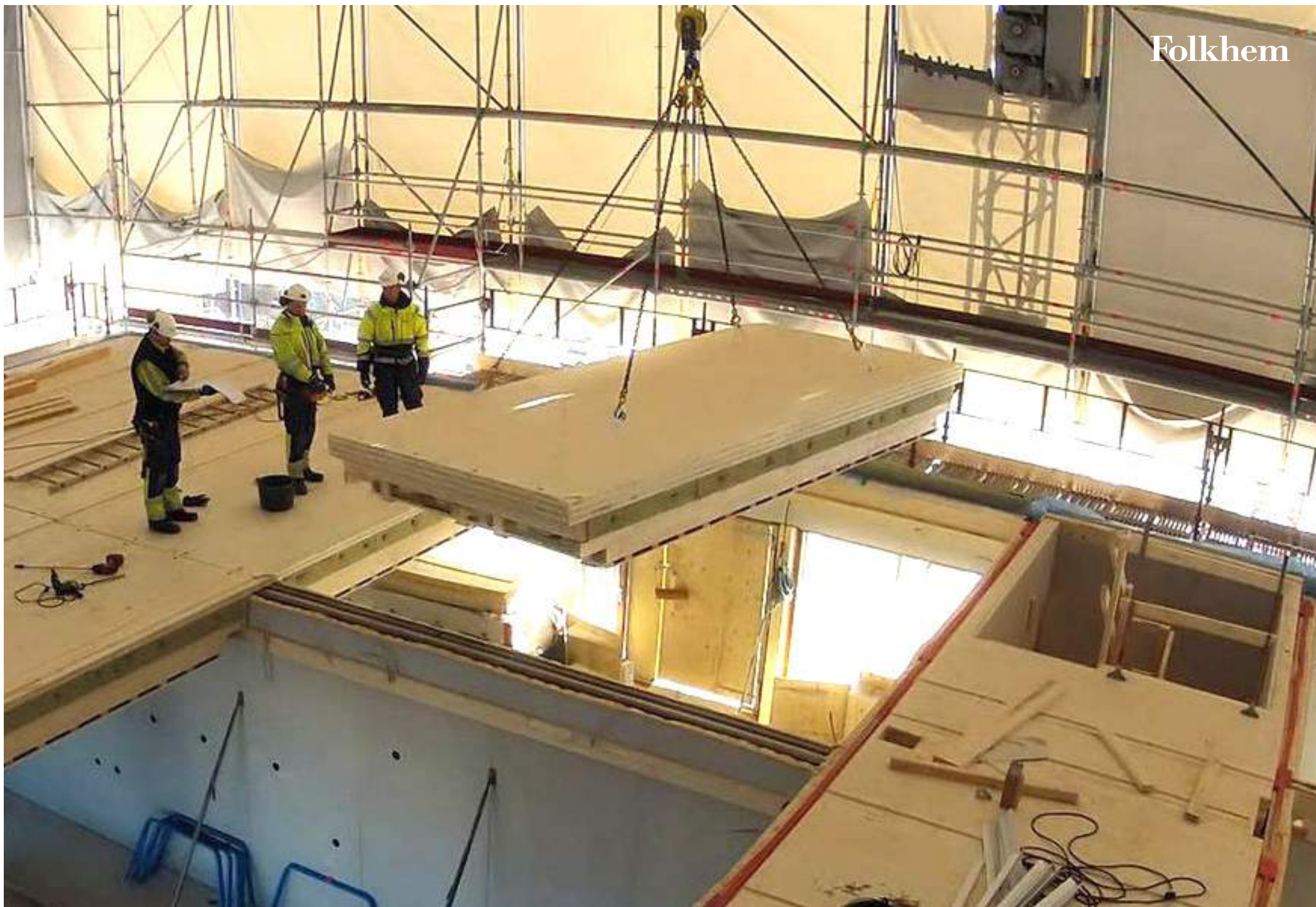


Folkhem





Folkhem





N7 Plank Stall 3



Folkhem



Folkhem



Folkhem









Petra Gipp Architektur

Folkhem

Söderkåkar/Utopia



Folkhem

Skinnarviksberget/Gipp Arkitektur





Petra Gipp Architektur

Folkhem

Nytorget/Gipp Arkitektur



Folkhem

Hagastaden/General Architecture





In Praise of Shadows

Fredhäll/HLL



Folkhem

Hammarbyhöjden/General Architecture





Stora Essingen/Jägnefält Milton

Ålstensskogen/
Gustaf Appell Arkitektkontor





Ulleråker/Arkitema Architects



Carmen Izquierdo

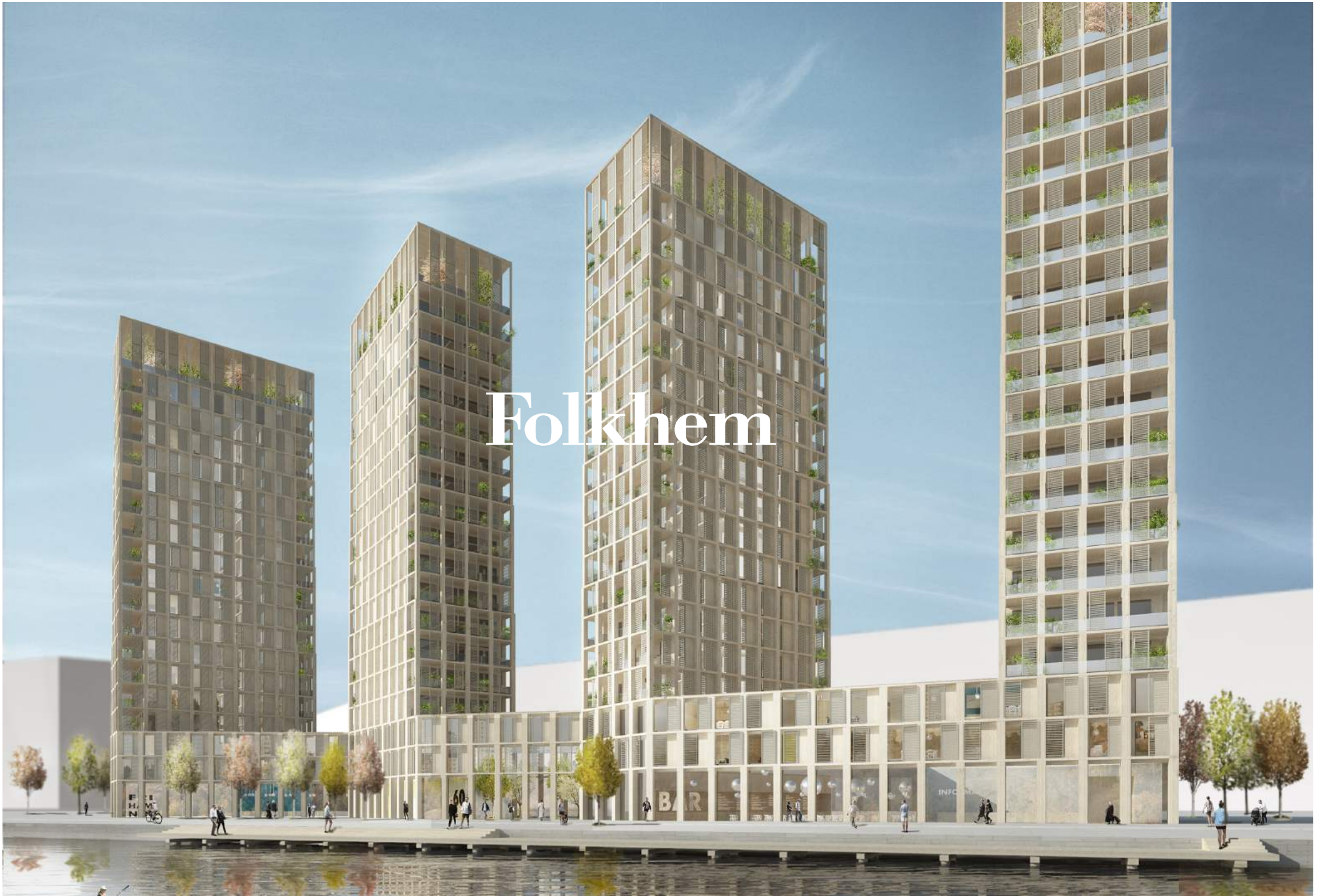


General Architecture



Kjellander + Sjöberg Arkitektkontor

Folkhem



A black and white photograph of a hand held palm up, with a heart-shaped pile of small seeds resting in the center. The background is a blurred, textured surface, possibly soil or gravel. The text is overlaid on the image in a clean, white, sans-serif font.

This is all you need

(You can't grow concrete and steel)

A wide-angle landscape photograph of a calm body of water, likely a lake or fjord, reflecting a dense forest of tall, thin trees on a rocky island. The sky is a pale, overcast blue. The word "Folkhem" is written in a large, white, serif font across the center of the image, superimposed over the trees and the reflection. The overall mood is serene and quiet.

Folkhem