

EMERGENCY SOLUTIONS

COVID-19


Rapid installation of temporary medical infrastructure and equipment

19 April 2020



GL events Live – QGM Holding – STRICTLY CONFIDENTIAL

Commercial in Confidence. The contents of this document are strictly confidential, and no part of this document may be disclosed or disseminated to any persons or third parties without the express written permission of GL events and QGM Holding.



« We have not had the same past, you and us, but we will have the same future, strictly speaking. The era of singular destinies is over. No one can live out the only preservation of self...»

Cheikh Hamidou Kane



OBSERVATION

Coronavirus, as in most of the world, is expanding on the African continent. As of March 30, 2020, 46 of 52 African countries have been affected by the virus. This announced crisis has many facets and confirms to us how necessary a rapid, united and adapted health approach is.

Thus, in order to strengthen health systems, we propose to government authorities, to NGO and to other private entities, to deploy temporary and adapted medical infrastructures with a concept of independent modules as: a testing area, an hospitalization area (for observation, standard, or for intensive care), together with additional modules used to create a hospital environment (laboratory, X-Ray, morgue, ...), with a possible autonomy (power, water,...).

There is not one Africa but "Africas". The deployment of emergency health infrastructures must be supported by competent players capable of understanding the needs of each country, each city.

PROPOSAL

GL events, an international group present in South Africa and in Dubai, associated with QGM Holding, expert in the deployment of health services in Africa, would like to offer you our services:

a solution of turnkey medical modules including medical equipment, and operational as soon as possible.

Our modular infrastructure concept has several advantages because it can be installed, “à la carte”, to match your needs:

- On a bare surface, independently
- In addition to an existing hospital or medical infrastructure
- Possibly within an existing infrastructure such as a stadium or gymnasium

Our priority is to participate in your fight against the virus but also to offer you health solutions that could adapt to your health infrastructure in post-crisis periods.

SOLUTION

A Covid-19 infrastructure is characterized by two areas:

- A triage area and possibly a temporary hospitalization area which must respect the containment rules and be subject to careful disinfection.
- A Covid-19 zone where positive patients are gathered. Protective measures are mainly supported by the care staff.

According to the needs, we can create different modular structures ranging from a testing centre (sorting, prevention, distribution of basic necessities) to the creation of a real temporary hospital dedicated to Covid-19.

The modular aspect therefore offers a panel of solutions adapted to your needs and to the health organization already in place in the field. This easily transportable solution guarantees you a great reactivity. These modules must be independent in order to meet the various evolving needs:



**Testing
Module**



**Hospitalization
Module**



**Intensive Care
Unit Module**



**Operating Theater
Module**



**X-Ray or
Scanner Module**



**Cloakroom,
sanitary,
shower module**



**Morgue
Module**



**Technical
Module
(power, water..)**

MODULES

Reception Drive

Welcome desk and office equipment **x1**
Sampling booth **x1**
Treatment trolley (drive) **x1**

Testing Module

Stretcher with gallows **x5**
Blood pressure monitor **x5**
Stethoscope **x5**
Treatment trolley **x5**
Thermometer **x5**
Glucometer **x5**
Examination Lamp **x5**

Temporary Hospitalization

Bed with gallows **x5**
Nocolysis (diffusion apparatus) **x2**
Independent oxygen generator (20L/min) **x1**

Laboratory

Microscope **x1**
Hematology analyzer **x1**
Biochemistry Analyzer **x1**
Device ESR **x1**
Urine Analyzer **x1**
Centrifuge **x1**
Incubator **x1**
Glucometer **x1**
Laboratory Stool **x1**
Blood product refrigerator **x1**
Refrigerator for medicines **x1**
Covid PCR test / Rapid test **x1**

X-Ray

X-ray apparatus mobile digital **x1**
Service trolley **x1**
Lead Apron **x1**
Protective equipment for staff **x2**
Portable Ultrasonic Device **x1**
Scanner (option) **x1**
Screen **x1**

MODULES

Operations Theater

Operating table **x1**
Scalytic **x1**
Anesthesia workstation **x1**
(with fan and monitor)
Electrocautery equipment **x1**
Hand-held electrode defibrillator **x1**
AED Consumer Defibrillator **x1**
Infusion set and
of syringe pumps **x3**
General purpose instrument **x1**
Orthopaedic Surgical Set **x1**
Medical Waste Box **x1**
Double bowl on stand **x1**
Suction **x1**
Stainless steel sink **x1**
Storage cabinet **x1**
Steam Sterilizer **x1**
Autoclave **x1**
Ultrasonic cleaner **x1**

Hospitalization By Module

Beds **x10**
Shelves **x10**
Infusion stand **x10**

Intensive Care Unit by Module

Critical Care Beds **x6**
Treatment trolley **x2**
Defibrillator **x1**
Intubation Set **x6**
Tracking Monitor **x6**
Infusion set
and syringe pumps **x6**
Respirator **x6**
Suction device **x2**
ECG unit **x1**

Morgue

Fridge (4 bodies) **x3**
Washing table **x1**

Technical Module

Mobile air conditioning unit **x1**
Bottle filling system generator
oxygen individual oxygen **x1**
Generator O2
Water treatment
Control Panel

Laundry

Sanitation change room showers

O2 Production plant

Incinerator

Catering Lounge

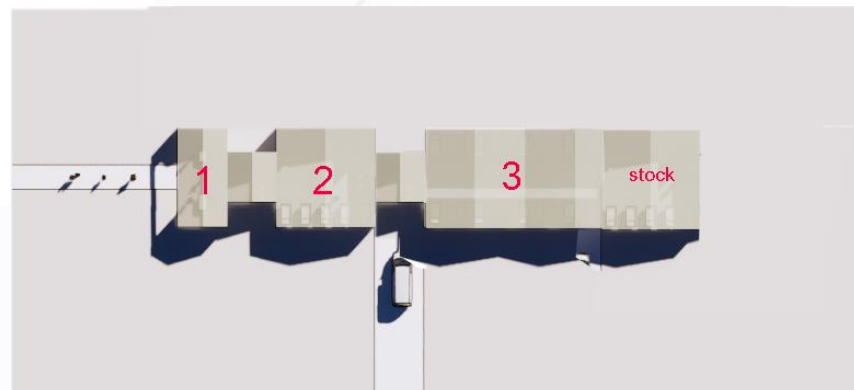
EXAMPLES :

AUTONOMOUS MEDICAL STRUCTURES COVID-19

All modules are completely autonomous and can be selected individually or in combination

Example no.1 : Proximity structure

The aim of these structures is to offer prevention, screening and temporary care before transfer. They are composed of a reception, a testing centre, a small temporary hospitalization, a prevention centre and the supply of basic necessities to the population (mask, gel, gloves, water, food).



N°	Name	Number
1	Drive Home	1
2	Sorting module	1
3	Temporary hospitalization	1

QGM Holding is also able to provide :

FSP1, FSP2, 3PLIS surgical masks, protective visor, protective gown, gloves, hydroalcoholic gel, Covid-19 PSR / rapid test

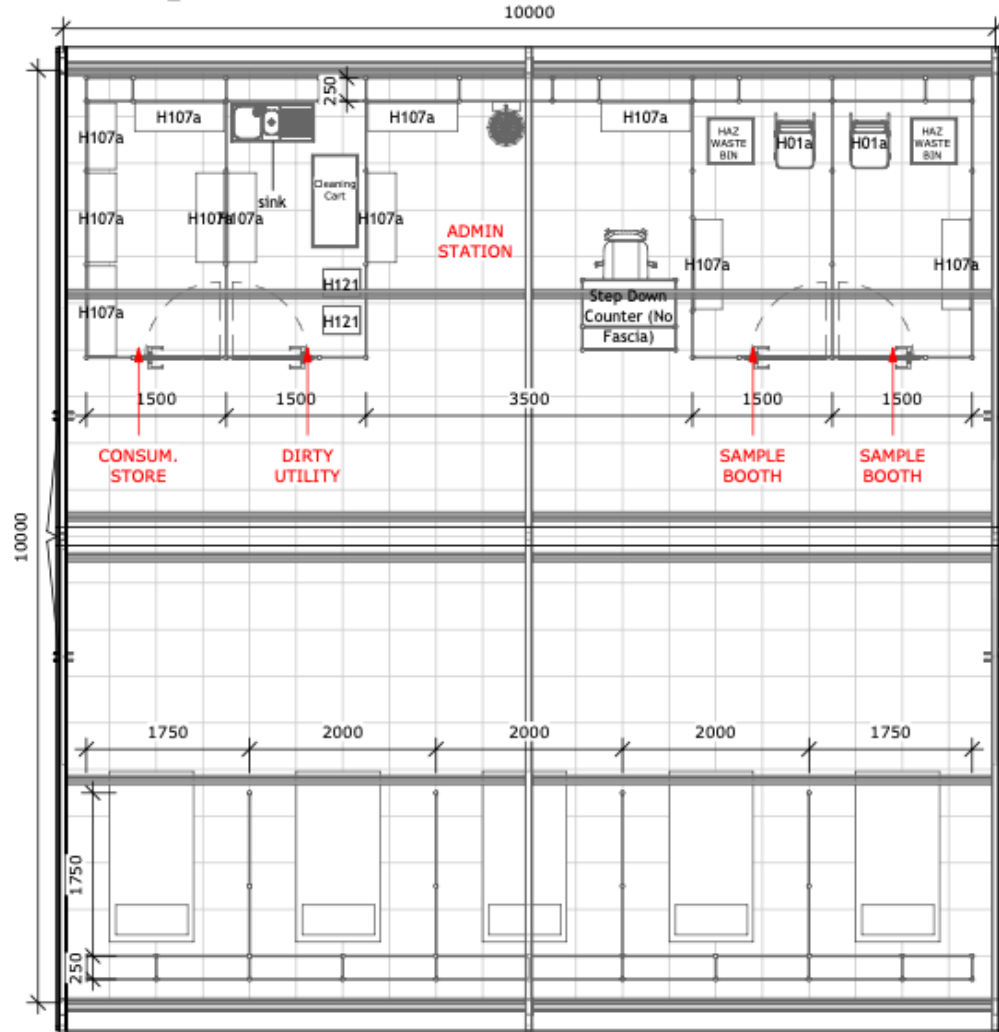


Cnr Nasrec & Randshow Road,
Johannesburg, 2000
South Africa

Head Office: (Johannesburg) - tel: +27 11 210 2500, fax: +27 11 680 9940
Branches: (Cape Town) - tel: +27 21 526 3200, fax: +27 21 552 1841
(Durban) - tel: +27 31 579 3255, fax: +27 31 563 3244

www.gl-events.co.za

COVID-19 MARQUEES_VIRUS TESTING UNIT_REV000



Layout - Furniture

CODE	DESCRIPTION	QTY
Basin	Basin - Plumbing	1
H01a	Office Chair	2
H08	Eddy Office Chair	1
H107a	Flat Shelves	20
H107a	Flat Shelves	2
H121	Locker Unit	2
sink	Plumbing	1
Step Down Counter (No Fascia)		1
Triage Bed (Specification TBC by Supplier)		5
Haz Waste Bin		2
Cleaning Cart		1

1 PLAN LAYOUT

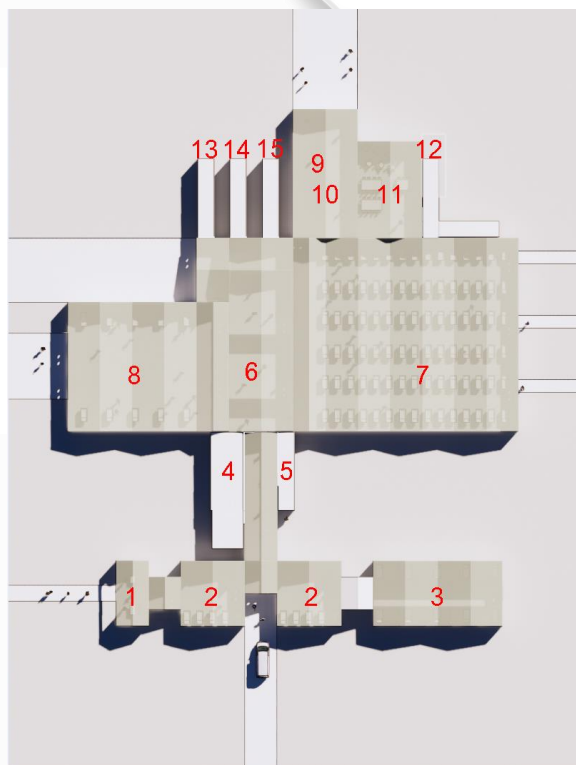
/ client: ... / show: MARQUEE HOSPITAL / venue: ... / date: 2020/04/18 20:35:44 / stnd no: VIRUS TESTING UNIT / designer: ZAHEER / ae: ... A101

EXAMPLES :

AUTONOMOUS MEDICAL STRUCTURES COVID-19

All modules are completely autonomous and can be selected individually or in combination

Example n°2: Complete structure Covid-19 for 100k/150k inhabitants



N°	Name	Number
1	Drive Home	1
2	Sorting module	2
3	Temporary hospitalization	2
4	Laboratory	1
5	Radiology	1
6	Operating theatre	1
7	Hospitalization by module	9
8	UCI by module	2
9 /10	Cloakroom/Sanitary/Shower	1
11	Catering/Relaxation	1
12	Lingerie	1
13	Waste incinerator	1
14	Morgue	1
15	O2 power plant	1



FOOTBALL PITCH BOUNDARY

FOOTBALL PITCH BOUNDARY

PEDESTRIAN ENTRANCE



FOOTBALL PITCH BOUNDARY

GENERAL WARD BEDS: 90

L.C.U WARD BEDS: 12

EMERGENCY WARD BEDS: 10

TRIAGE BEDS: 10

SHOWERS: 4

TOILETS: 29

WASH BASINS: 21

SLUICE ROOM 1

WASH ROOM 2

WORKSTATION: 4

40" CONTAINERS: 7

20" CONTAINERS: 4

CORRIDOR STORAGE UNITS: 6

0 ENTRANCE / CANOPEE ATTENTE

1 RECEPTION / ACCUEIL / DRIVE

2 VIRUS TESTING UNIT (TRIAGE) / MODULE DE TRIAGE

3 EMERGENCY WARD / HOSPITALISATION PROVISOIRE/ SANTÉ

4 LAB / LABORATOIRE

5 RC SCANNER / RADIO CONVENTIONNEL + SCANNER

6 SURGERY MODULE / BLOC OPERATOIRE

RECOVERY / STE + PRE OP + POST OP/ SANTÉ

7 GENERAL WARD / HOSPITALISATION COVID/ SANTÉ

8 L.C.U / UNITE SOIN INTENSIF

9 SANITARY + WARD BATHROOM / VESTIAIRES/ SAS/ SANITI/ DOUCHES

10 DINING QUARTERS / RESTAURATION/ LAVERIE/ DETENTE

11 STAFF ENTRANCE (MALE + FEMALE) / ENTREE DU PERSONNEL (HOMME ET FEMME)

12 LAUNDRY / LINGERIE

13 WASTE DISPOSAL / DECHETS/ INCINERATEUR

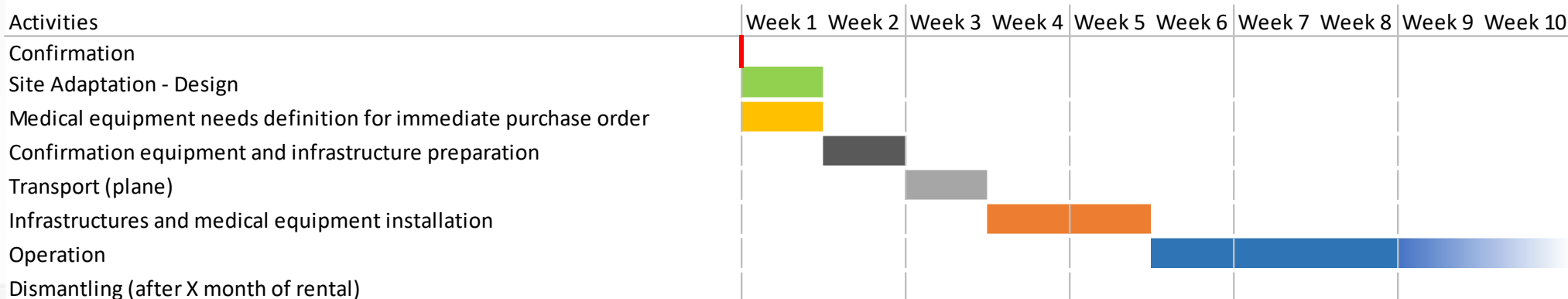
14 MORTUARY / MODULE MORGUE

15 O2 STORAGE / PLATFOME O2

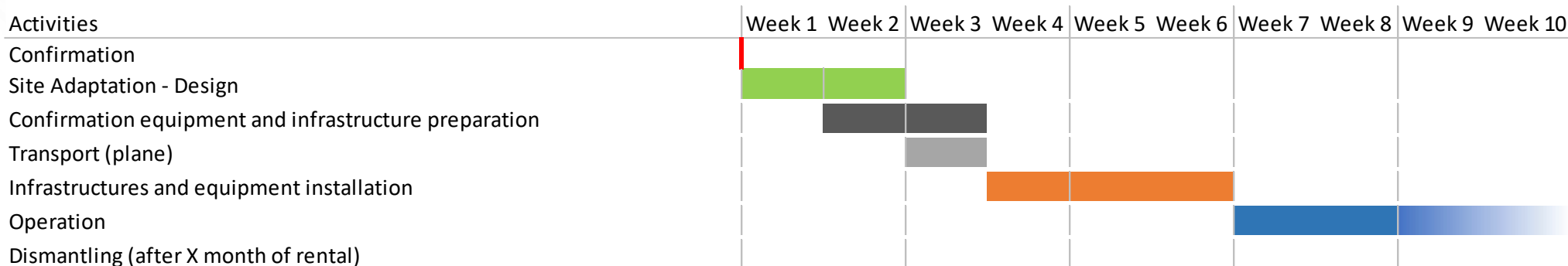
FOOTBALL PITCH BOUNDARY

DEPLOYMENT PLANNING

EMERGENCY SOLUTION - DEPLOYMENT PLANNING FOR A TESTING MODULE



EMERGENCY SOLUTION - DEPLOYMENT PLANNING FOR HOSPITAL INFRASTRUCTURE



Deployment: subject to availability of medical equipment

Final offer: according to the conceptualization of request

REFERENCES



- Electrical distribution – Military Hospital – *France*
- Air-conditioning for temporary hospital – *Brazil*
- **Temporary polyclinic** Olympic Games Rio 2016 – *Brazil*
- Base Camp for Chilean Army and Chilean Police – *Chile*
- Base Camp for the French Ministry of Defence and Infrastructure Directorate – *Kabul, Afghanistan*
- Base Camp for the French Ministry of Defence and Infrastructure Directorate – *Bangui, Central-African Republic*
- Temporary **Hospital** for the Chilean Airforce – *Chile*
- Temporary **Hospital** for the Chilean Army – *Chile*
- Base Camp for the French Ministry of Defence and Infrastructure Directorate – *Lebanon & Gabon*
- Aid Station – *Chile*

Jean-Guillaume LACOSTE

GL events Middle East – CEO

United Arab Emirates

Mob : +971 50 306 7252

jean-guillaume.lacoste@gl-events.com

Maxime ROSENWALD

GL events South Africa – Managing Director

South Africa

Mob : +27 60 508 7713

maxime.rosenwald@gl-events.com

Docteur Quentin GAUDISSERT

QGM Holding Co-founder & CEO

Belgium

Mob :+32 495 20 00 07

q.gaudissart@qgm-ms.com

Gwen MARIEN

QGM Holding Co-founder

France

Mob :+33 6 89 53 75 03

g.marien@qgm-ms.com

