



JARDIN BLANC

AT RHS CHELSEA FLOWER SHOW

— with —

RAYMOND BLANC

21ST – 25TH MAY 2019

WELCOME

“In a peaceful corner of the spectacular RHS Chelsea Flower Show, you will find my secret garden - Jardin Blanc.”

Inside you will enjoy delicious food, beautiful flowers, inspiring artwork and plenty of Champagne for celebrating... of course!

It is an enchanting place for dining and unwinding with friends, family or colleagues. All whilst enjoying a wonderful day or evening at the flower show.

For you, I have created very special menus using the best seasonal ingredients and served with style, elegance and joie de vivre.

We truly hope you will join us this May. My team would love to help you plan your visit, so please do contact us with any questions at all.

We look forward to welcoming you soon.



Raymond Blanc

Raymond Blanc OBE

▶ WATCH THE VIDEO



A RAYMOND BLANC,
RHS & SODEXO
COLLABORATION

#JardinBlanc



▶ TAKE OUR 360 TOUR



YOUR JOURNEY BEGINS

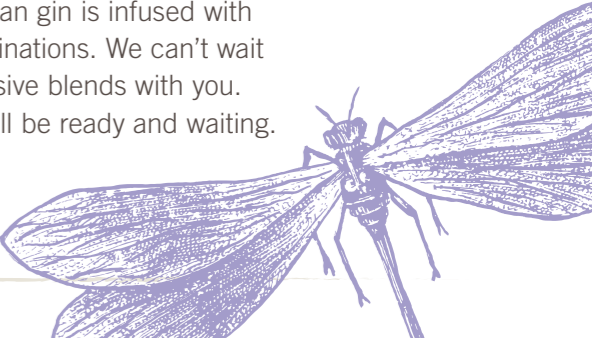
Nestled in the grounds of one of the world's most celebrated horticultural events, you'll find the entrance to Jardin Blanc. Inside, discover the perfect atmosphere for dining, unwinding and celebrating the joys of spring.

TASTE THE SEASON

At Jardin Blanc we use the very best in seasonal, quality ingredients in every dish – from breakfast to dinner, from canapés to afternoon tea. All menus are designed by Jardin Blanc's Chef Director Raymond Blanc, and celebrate the beauty and excitement of British springtime produce.

GIN O'CLOCK

We proudly distill and bottle our own gin on site at Jardin Blanc. Our artisan gin is infused with beautiful botanical combinations. We can't wait to share this year's exclusive blends with you. Our expert mixologists will be ready and waiting.



A FEAST FOR THE SENSES

There's so much to see – and hear – at Jardin Blanc. Unwind with our live music by day, or let loose with our DJ by night.

There are lots of unique experiences to seek out too. Why not watch a cookery demonstration by Raymond Blanc and his team? Or hear an exclusive talk about this year's prized gardens at the show? Or join in our our Warner Edwards botanical gin masterclass!

Jardin Blanc is over 1000 square metres of outstanding horticulture alongside stunning art and sculptures from some of Britain's most inspired artists. We cannot wait for you to discover these incredible pieces for yourself.





Raymond Blanc OBE

OVERVIEW

All Jardin Blanc menus are exclusively designed by acclaimed chef Raymond Blanc.

All dining experiences include ticket entry to the RHS Chelsea Flower Show.

We celebrate convivial dining; all groups under 8 persons will be sat at beautiful shared tables.

Private garden room spaces are available for special occasions and corporate hospitality for groups of up to 40 or multiples of.

	Exclusive Members' Days				
	TUE 21 May	WED 22 May	THU 23 May	FRI 24 May	SAT 25 May
● Le Lily Regale	DAYTIME 8.00–17.00 £650	–	–	–	–
● Le Lily	–	DAYTIME 8.00–17.00 £600	DAYTIME 8.00–17.00 £600	–	DAYTIME 8.00–17.00 £335
● La Primrose	EVENING 15.30–21.30 £500	EVENING 15.30–21.30 £450	–	–	–
● La Tulip	–	–	EVENING 15.30–21.30 £450	–	–
● Le Sunflower	–	–	–	DAYTIME 8.00–17.00 £300	–
● Le Jasmine	–	–	–	AFTERNOON & EVENING 15.30–20.00 £350	–

A perfect way to spend a day or evening at the show, with friends, family or clients alike. Please contact the team to talk about your day.
ALL PRICES EXCLUDE VAT.



R

Le Lily Regale

DAYTIME
TUESDAY 21 MAY



0845 268 0251
RHS.SHOWS@SODEXO.COM

DAYTIME

The ultimate Chelsea dining experience. Be one of the first to see the flower show!

This package includes a full day of dining and entertaining, an insightful live business and cookery Q&A session with Raymond Blanc, an interactive gin masterclass and superb live music throughout.

BEST FOR

- Exclusive Members' Day access
- Seeing the flowers at their freshest
- Enjoying the show grounds while they are quieter and easier to navigate

WHAT'S INCLUDED

- Entrance ticket to the RHS Chelsea Flower Show, with admission from 8.00
 - Entrance to Jardin Blanc from 9.00
 - Light breakfast, four-course lunch and afternoon tea all designed by Raymond Blanc
 - Complimentary open bar – including Champagne and botanical cocktails
 - Live Q&A session with Raymond Blanc
 - An exclusive gin masterclass by craft distillers Warner Edwards
 - Live music
 - Official show guide (1 per 2 guests)
 - Dedicated cloakroom and restrooms
 - Complimentary conference facilities including a TV screen and tech support
- Enhancements to the Le Lily Regale dining experiences are available as upgrades upon request*

WHAT'S INVOLVED

8.00 Entry to the RHS Chelsea Flower Show	9.00–10.00 Jardin Blanc opens and a light breakfast is served	11.00 Live business and cookery Q&A session with Raymond Blanc	11.30 Bar opens with Champagne and cocktails
NOON Lunch is served	AFTERNOON Gin Masterclass by Warner Edwards	15.45 Afternoon tea is served	17.00 Guests depart to further enjoy the showground



PRICES

TUE 21 MAY · £650_{+VAT}

Exclusive Members' Day

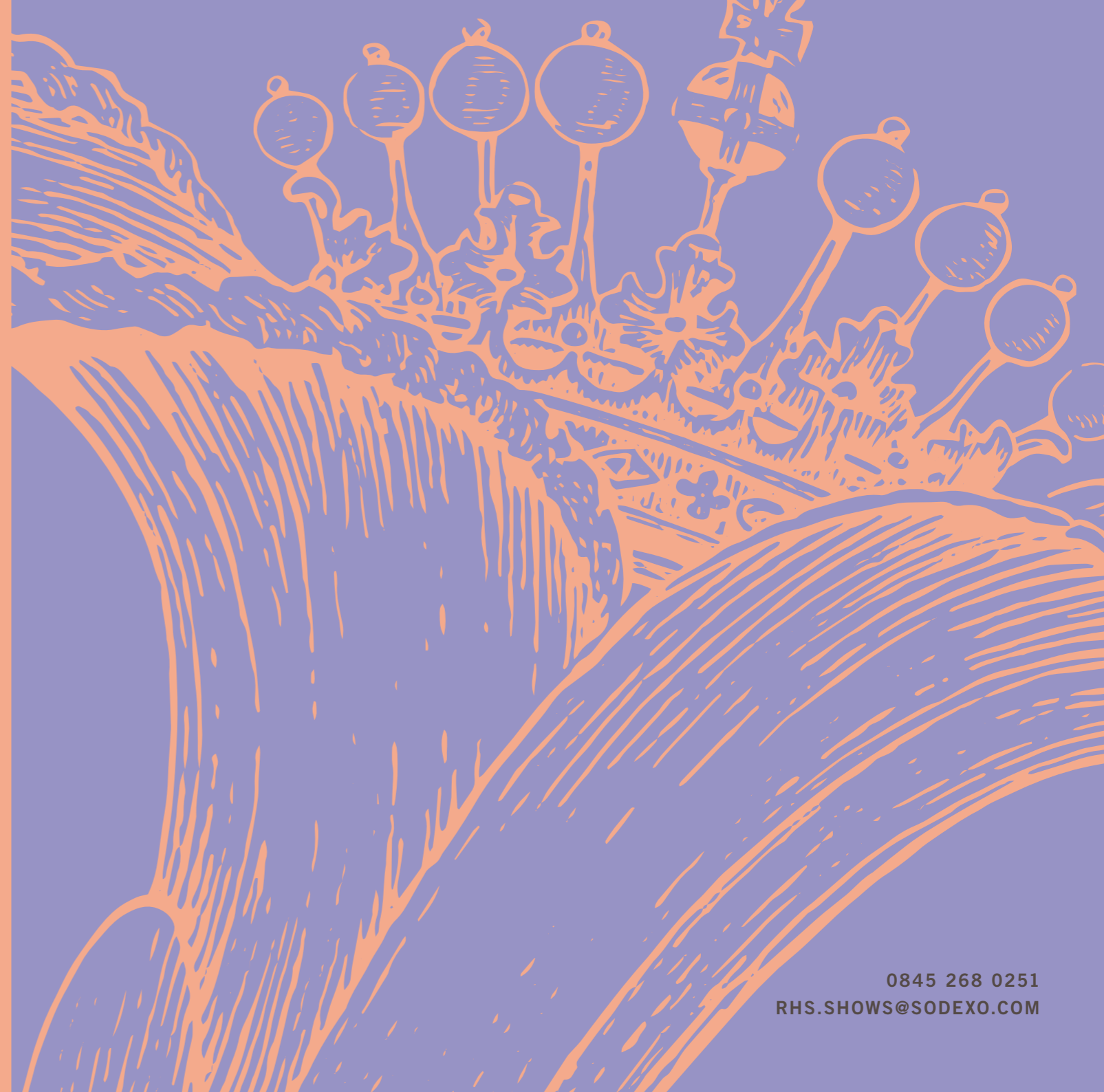
Enjoy an unforgettable all-day experience
on the first day of the world-renowned
RHS Chelsea Flower Show 2019.

L

Le Lily

DAYTIME

WEDNESDAY 22, THURSDAY 23
& SATURDAY 25 MAY



0845 268 0251
RHS.SHOWS@SODEXO.COM

DAYTIME

Light breakfast, a four-course lunch and afternoon tea.

Enjoy everything the RHS Chelsea Flower Show has to offer, alongside a full day of gastronomic excellence. You'll have the opportunity to explore the show grounds or just relax in the gardens between seatings, making for a wonderful day out.

BEST FOR

- Exclusive Members' Day access on the Wednesday
- Daytime enjoyment and celebrations

WHAT'S INCLUDED

- Entrance ticket to the RHS Chelsea Flower Show, with admission from 8.00
- Entrance to Jardin Blanc from 9.00
- Light breakfast, four-course lunch and afternoon tea
- Complimentary open bar – including Champagne and botanical cocktails
- Exclusive talk with the Jardin Blanc garden designer's about this year's RHS Chelsea Flower Show
- Live music
- Official show guide (1 per 2 guests)
- Dedicated cloakroom and restrooms
- Conference facilities including a TV screen and tech support (complimentary Wed; optional Thurs to Sat)

Enhancements to the Le Lily dining experience are available as upgrades upon request

WHAT'S INVOLVED

8.00 Entry to the RHS Chelsea Flower Show	9.00–10.00 Jardin Blanc opens and a light breakfast is served	11.30 Bar opens with Champagne and cocktails
NOON Lunch is served	15.45 Afternoon tea is served	17.00 Guests depart to further enjoy the showground



PRICES

WED 22 MAY* · £600_{+VAT}
THU 23 MAY · £600_{+VAT}
SAT 25 MAY · £335_{+VAT}

*Exclusive Members' Day

“The setup at the show is excellent. It feels like a sanctuary of space after the bustle of the showground.”

Jardin Blanc Guest



LP

La Primrose

EVENING

TUESDAY 21 & WEDNESDAY 22 MAY



0845 268 0251
RHS.SHOWS@SODEXO.COM

EVENING

Champagne, canapés and a four-course dinner.

Join us for an enchanted evening. Unwind after browsing the RHS Chelsea Flower Show with gourmet canapés and a refreshing glass of Champagne, followed by a beautiful dinner as the sun goes down. Enjoy live musical entertainment from talented musicians throughout.

BEST FOR

- Exclusive Members' Day access
- Dining and drinks at sunset



WHAT'S INCLUDED

- Entrance ticket to the RHS Chelsea Flower Show, with admission from 15.30
 - Champagne, canapés and a four-course dinner
 - Complimentary open bar – including Champagne and botanical cocktails
 - Live music
 - Official Show guide (1 per 2 guests)
 - Dedicated cloakroom and restrooms
- Enhancements to the La Primrose dining experience are available as upgrades upon request*

WHAT'S INVOLVED

15.30

Entry to the RHS Chelsea Flower Show

18.45

Jardin Blanc opens and welcomes you with Champagne & canapés

19.30

Dinner is served

21.30

Bar closes and guests to depart



PRICES

TUE 21 MAY* · £500_{+VAT}

WED 22 MAY* · £450_{+VAT}

*Exclusive Members' Day

“The balance of a relaxed ambiance and amazing attention to detail was noticeable. It was clear that Raymond was very invested in the success of the event and that added a certain special something.”

La Primrose Guest

T

La Tulip

EVENING
THURSDAY 23 MAY



0845 268 0251
RHS.SHOWS@SODEXO.COM

EVENING

Champagne, canapés and an array of tasting dishes.

A sociable evening full of food, music, fun and flowers. On arrival, you'll be treated to gourmet canapés and a glass of Champagne, followed by a selection of delectable tasting dishes – with a few special treats from our outdoor wood oven. Enjoy live music as you unwind, and later soak up a DJ set from our outdoor bar.

BEST FOR

- Bon vivants
- Social butterflies

WHAT'S INCLUDED

- Entrance ticket to the RHS Chelsea Flower Show, with admission from 15.30
 - Champagne, canapés and an array of tasting dishes
 - Complimentary open bar – including Champagne and botanical cocktails
 - Live music and DJ set
 - Official Show guide (1 per 2 guests)
 - Dedicated cloakroom and restrooms
- Enhancements to the La Tulip dining experience are available as upgrades upon request*

WHAT'S INVOLVED

- | | |
|--|--|
| 15.30
Entry to the RHS Chelsea Flower Show | 19.00
Jardin Blanc opens and welcomes you with Champagne & canapés |
| 19.30
Tasting dishes to be served throughout the evening | 21.30
Bar closes and guests to depart |



PRICES

THU 23 MAY · £450_{+VAT}

“It was brilliant! All of our guests were very happy at the event and preferred the tasting dishes which gave more opportunity for networking.”

Corporate Host at La Tulip

S

Le Sunflower

DAYTIME
FRIDAY 24 MAY



0845 268 0251
RHS.SHOWS@SODEXO.COM

DAYTIME

A three-course lunch and exclusive cookery demonstration by Raymond Blanc.

Raymond and his team entertain you with a live cookery demonstration at our outdoor kitchen. Gain unique insights into the team's culinary skills and world-renowned joie de vivre. Afterwards, join us for a sumptuous three-course lunch to set you up for a perfect afternoon of browsing the flower show.

BEST FOR

- Keen home cooks
- Raymond Blanc fans!

WHAT'S INCLUDED

- Entrance ticket to the RHS Chelsea Flower Show, with admission from 8.00
- Three-course lunch
- Live cookery demonstration by Raymond Blanc and his team
- Complimentary open bar – including Champagne and botanical cocktails
- Live music
- Official Show guide (1 per 2 guests)
- Dedicated cloakroom and restrooms

Enhancements to the Le Sunflower dining experience are available as upgrades upon request

WHAT'S INVOLVED

8.00 Entry to the RHS Chelsea Flower Show	10.00 Jardin Blanc opens for tea, coffee and breakfast pastries	11.00 Raymond Blanc live cookery demonstration begins
11.30 Bar opens with Champagne and cocktails	NOON Lunch is served	15.00 Guests depart to further enjoy the showground



PRICES

FRI 24 MAY · £300_{+VAT}

“Raymond’s cooking demonstration was excellent and entertaining. The staff were friendly and engaging. The whole atmosphere was relaxing and welcoming.”

Le Sunflower Guest

J

Le Jasmine

AFTERNOON & EVENING
FRIDAY 24 MAY



0845 268 0251
RHS.SHOWS@SODEXO.COM

AFTERNOON & EVENING

Champagne afternoon tea before an enchanting concert under the Chelsea stars.

Unwind with a glass of Champagne whilst you enjoy a truly special afternoon tea. Later, after exploring the flower show, join us again for a Champagne and canapé reception before taking your seats at the showground bandstand for the exclusive 'Chelsea Late' concert. A fantastic way to start the bank holiday weekend.

BEST FOR

- Music lovers
- Champagne afternoon tea



WHAT'S INCLUDED

- Entrance ticket to the RHS Chelsea Flower Show, with admission from 15.30
- Champagne afternoon tea and later, a pre-concert Champagne and canapé reception
- Complimentary open bar – including Champagne and botanical cocktails
- Live music at Jardin Blanc
- Reserved seating at the 'Chelsea Late' music concert at the showground bandstand
- Cocktail to take away to the concert on departure
- Official show guide (1 per 2 guests)
- Dedicated cloakroom and restrooms

WHAT'S INVOLVED

- | | | |
|--|--|---|
| 15.30
Entry to the RHS Chelsea Flower Show | 15.45
Jardin Blanc opens and Champagne afternoon tea is served | 17.00
Guests depart to enjoy the showground |
| 18.30
Guests return to Jardin Blanc for a pre-concert Champagne and canapé reception | 19.45
Guests depart to take their seats at the 'Chelsea Late' music concert at the showground bandstand, with cocktail in hand | 20.00
Jardin Blanc closes |



PRICES

FRI 24 MAY · £350^{+VAT}

"A truly special affair. There was a great atmosphere at our table and the staff were helpful and friendly in supporting our experience."

Le Jasmine Guest



JARDIN BLANC

AT RHS CHELSEA FLOWER SHOW

— *with* —

RAYMOND BLANC

For further details or
to book your place

0845 268 0251

RHS.Shows@Sodexo.com

www.rhs.org.uk/Jardin-Blanc

[#JardinBlanc](https://twitter.com/JardinBlanc)

PRESTIGE
VENUES & EVENTS

sodexo