

**TotalEnergies**



TotalEnergies Marketing Hellas

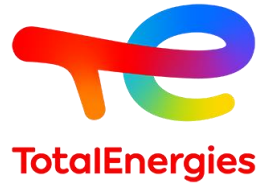
*Mobility Evolutions in Europe*

Yohan Chouchene \_ Managing Director

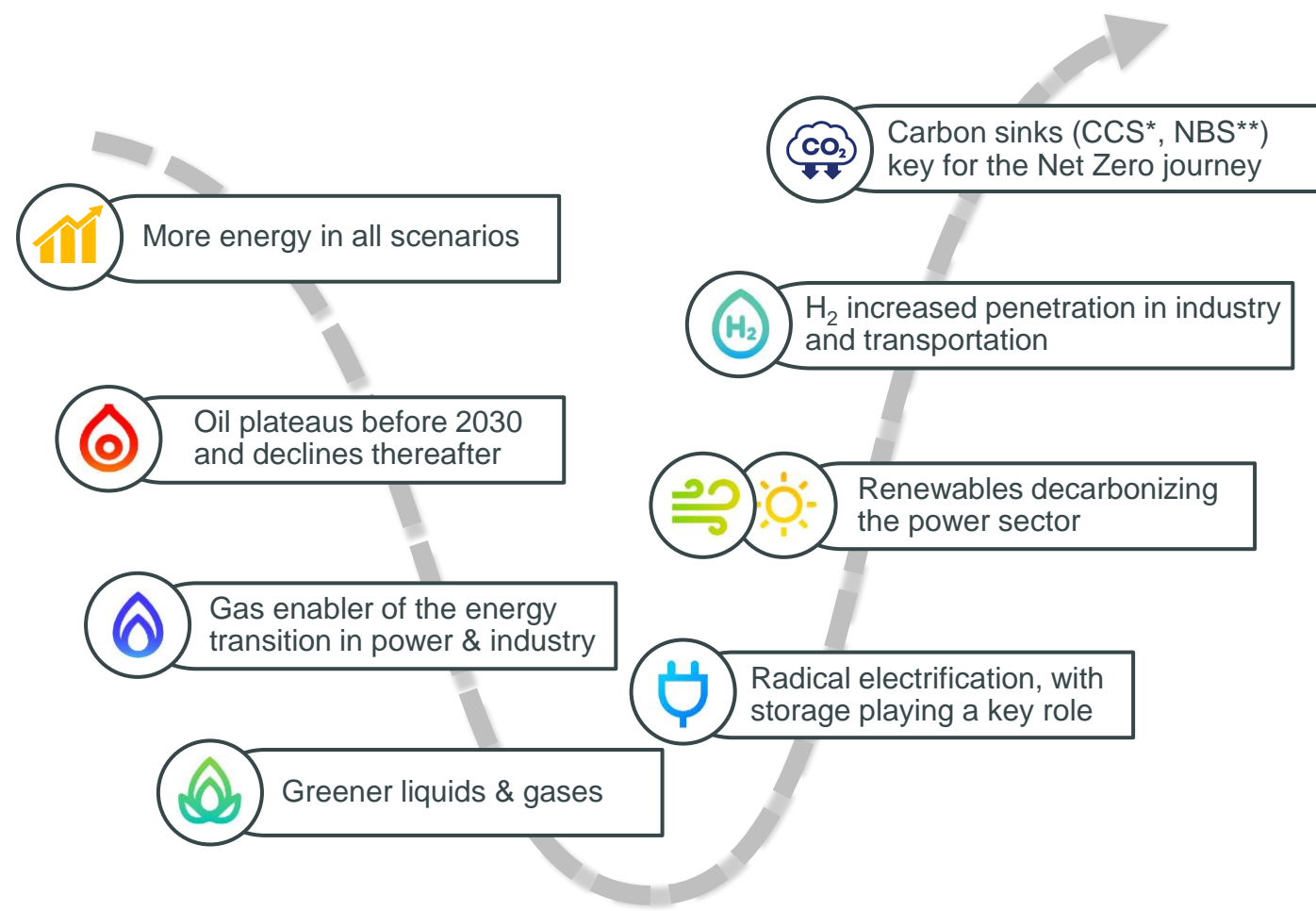
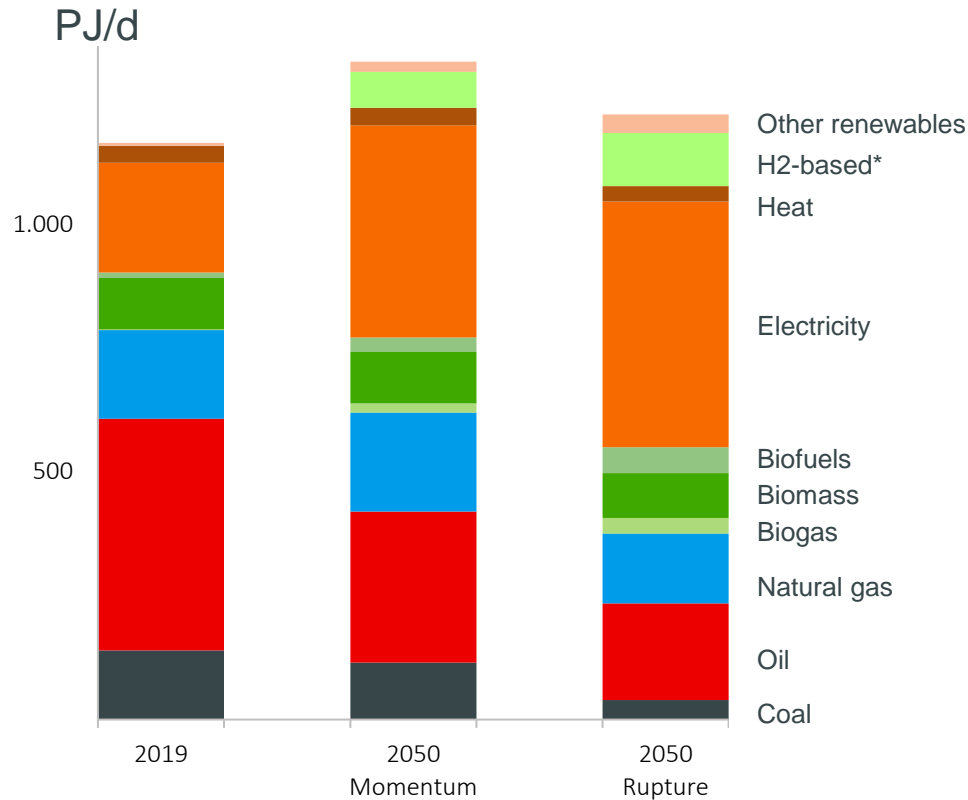
Athens, 15<sup>th</sup> December 2021

# More energy & Less emissions

## Long-term scenarios – Energy transition pathway

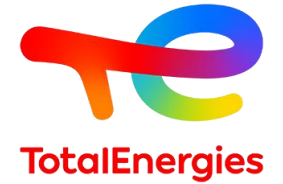


### Total final consumption

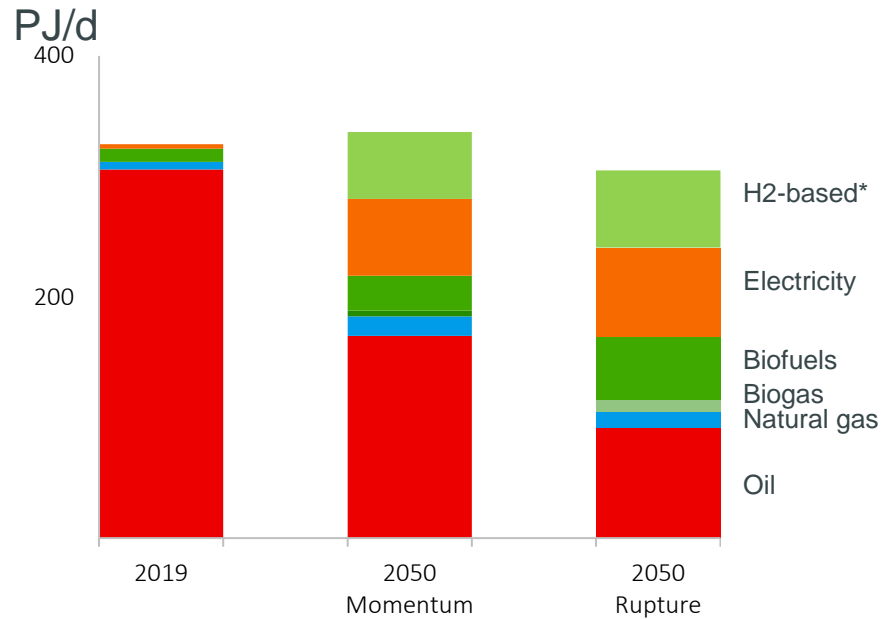


# Zoom on Transport

A necessary revolution including in emerging markets



## Transport total final consumption



\* Includes H2, e-fuels (H2 + CO2), methanol, ammonia...

## Share of electricity and fuel cells in 2050

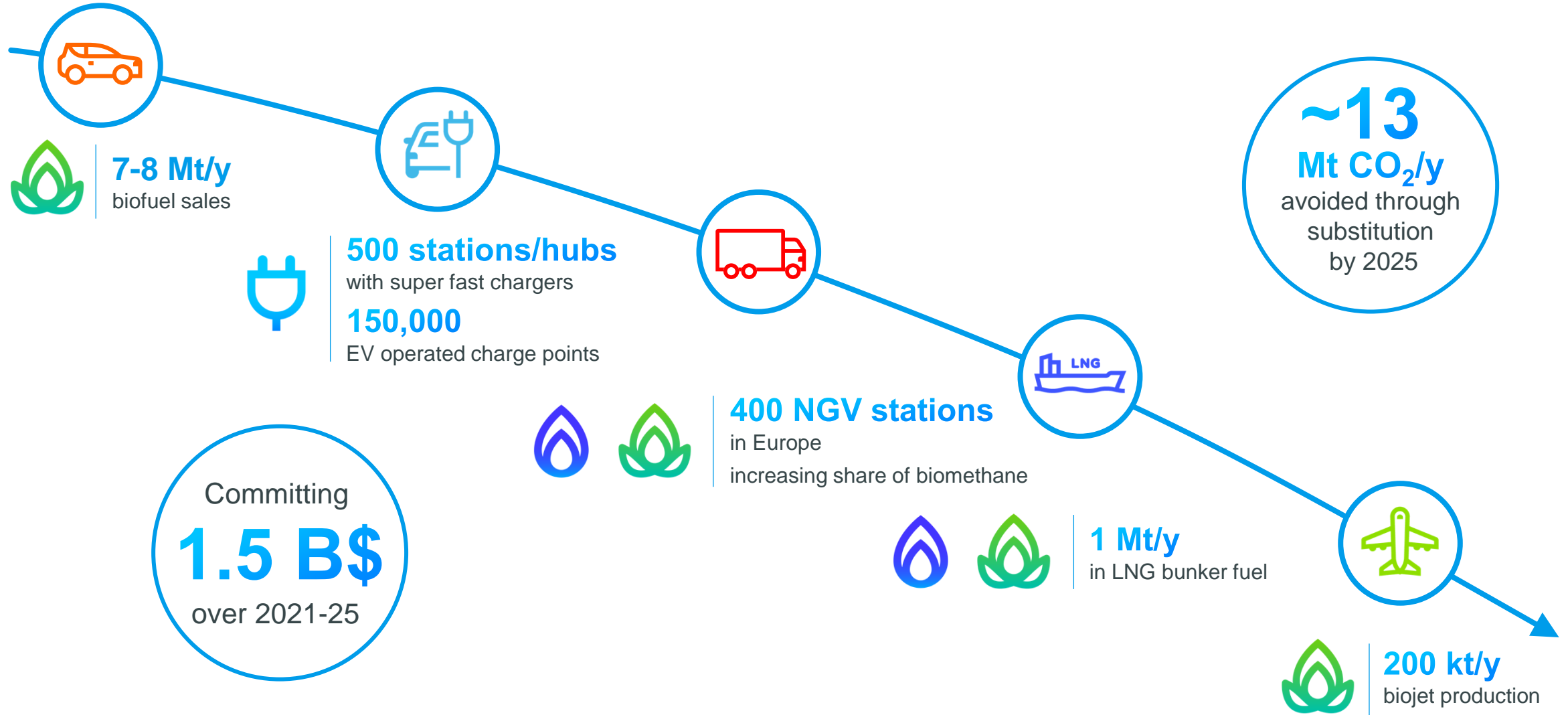
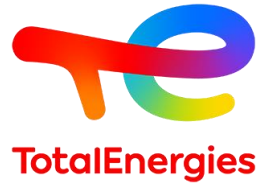


## Non-fossil fuels share of energy demand in 2050



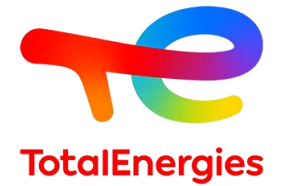
# Decarbonizing transportation

Being a partner in our customer's carbon neutrality journey

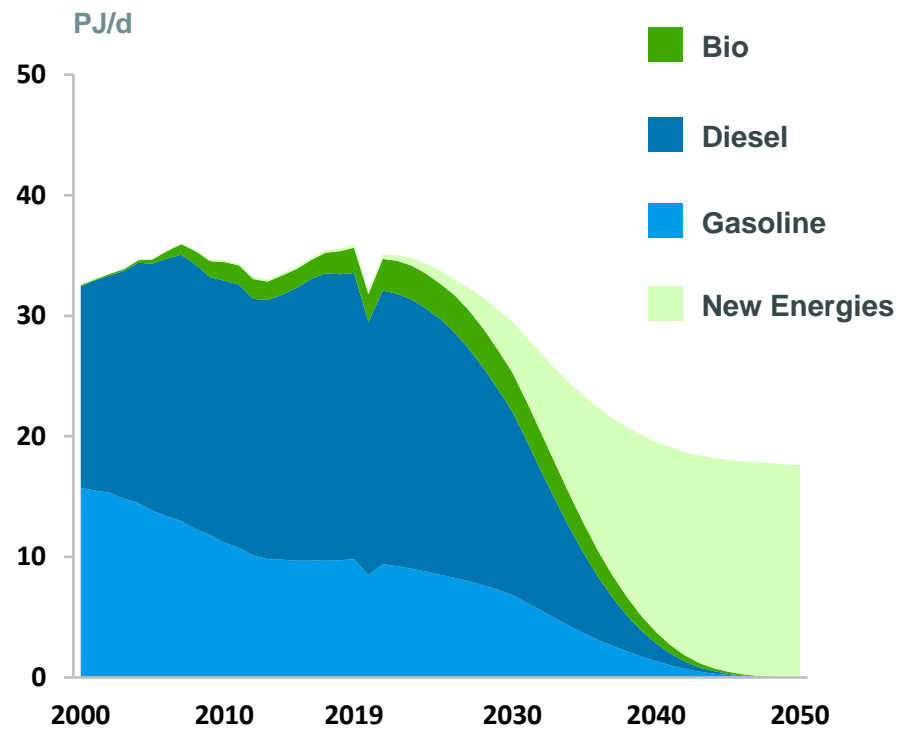


# Zoom on Transport

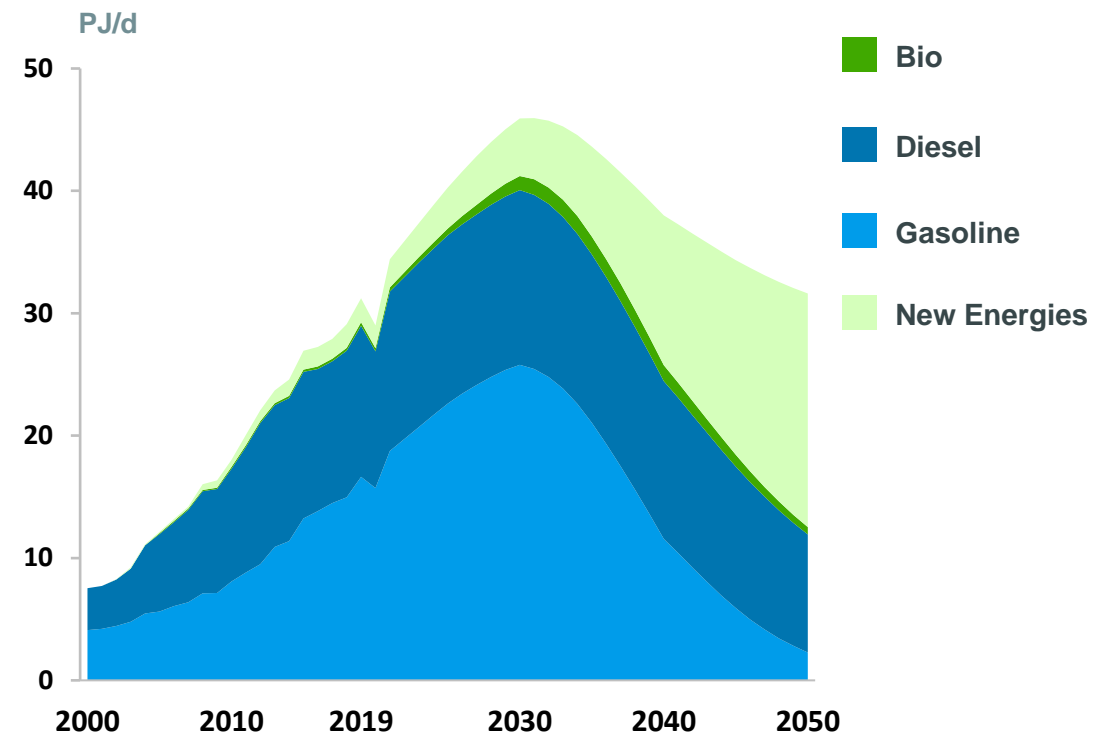
## Geographical diversity of the challenges



### Europe - road: Energy demand

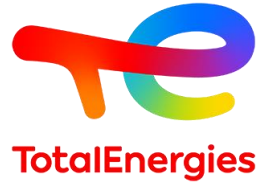


### China - road: Energy demand



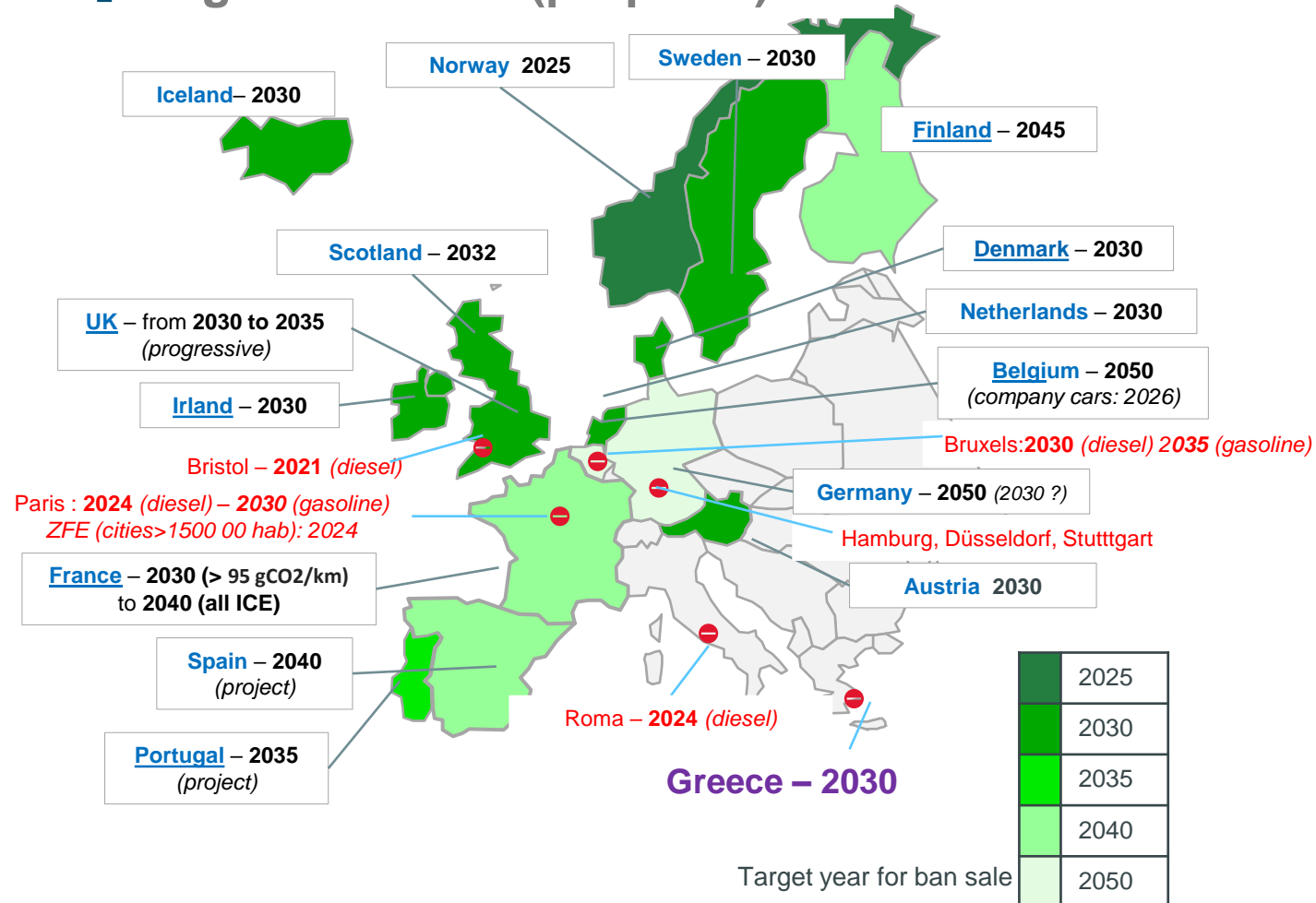
# Regulations

Europe: directives & bans...



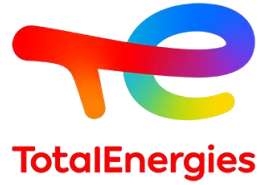
## ICE Light Vehicle

Target ban: 2035 (proposal)

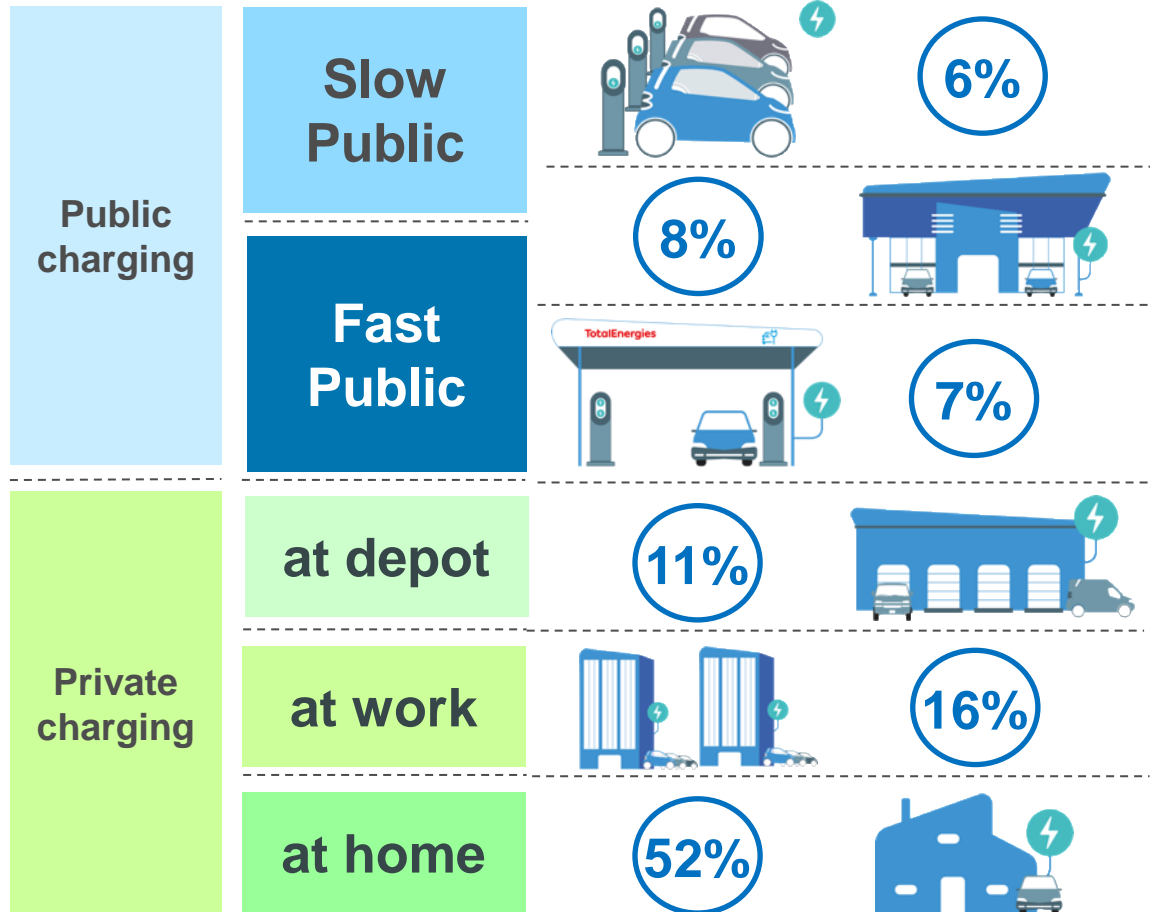


# Electric Mobility

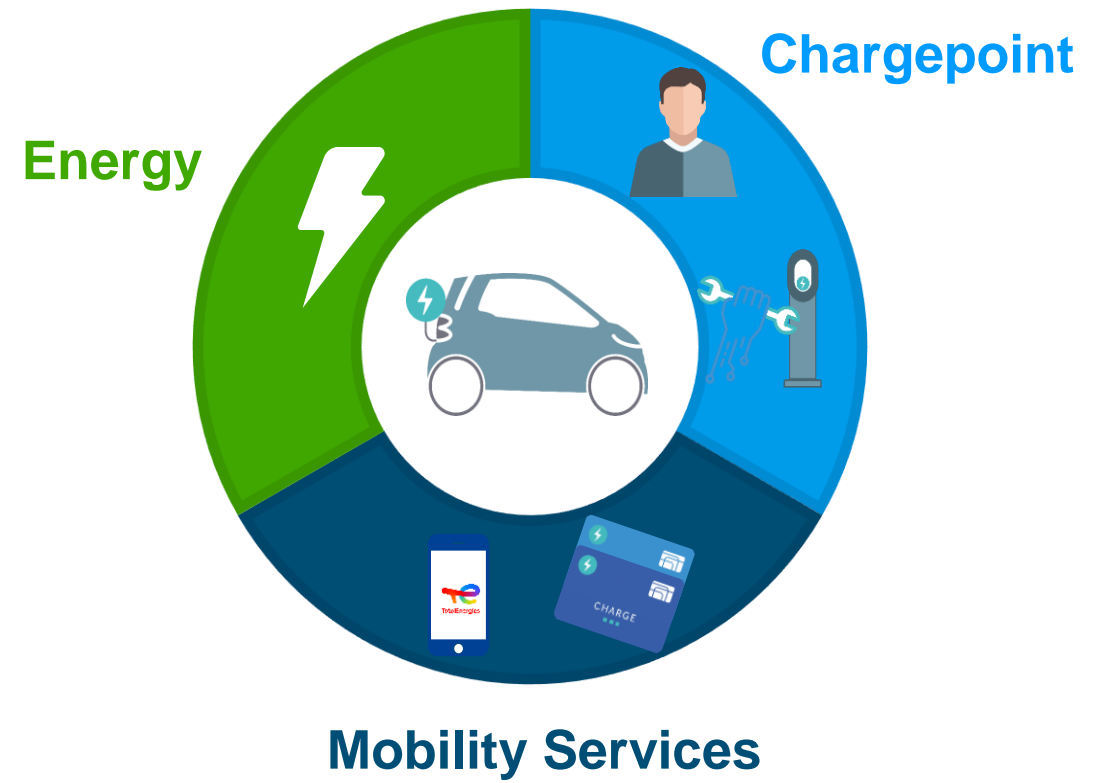
## Segments & Value chain



### Charging segment



### Value chain

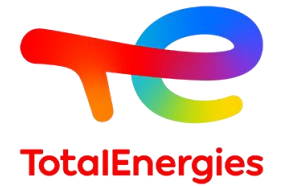


> 95% of the transactions made through an MSP platform



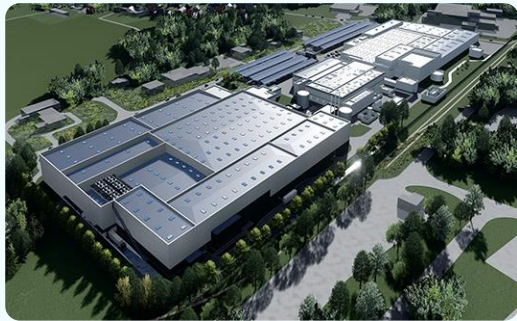
# Developing top tier positions in Electric mobility value chain

Being as recognized in tomorrow's electric mobility as in today's fuel market



## Battery manufacturing (TotalEnergies/Saft)

Investing in EV battery manufacturing in Europe



**ACC (Automotive Cells Company)**  
33/33/33 JV with Stellantis and Mercedes-Benz

**>120 GWh**  
capacity by 2030  
~2.5 M EVs/y

Growing e-mobility business in China











**TSE (Tianneng Saft Energy)**  
40/60 JV with Tianneng

**5 GWh**  
capacity by 2023

## EV Charge

**150,000**  
operated charge points\* by 2025

Positioning TotalEnergies on large cities (number of charge points)

<b>2019</b>		Metropolitan Region Amsterdam	<b>20,000</b>
<b>2020</b>		London	<b>1,700</b>
		Paris	<b>2,300</b>
<b>2021</b>		Amsterdam	<b>2,000</b>
		Antwerp	<b>3,000**</b>
		Singapore	<b>1,500</b>
		China (Hubei)	<b>&gt;11,000</b>
		Ghent	<b>800</b>

\* at stations, B2B sites and public concessions

\*\* TotalEnergies' estimate